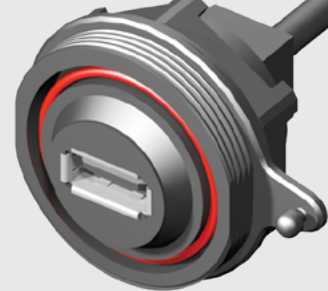


SCRUS-G-00.25-D-C5E



SCRUS-17-G-00.25-AMS-BC

SCRUS, SCRES SERIES

# IP68 SEALED USB & ETHERNET

Mates with:

SCPU

**SPECIFICATIONS**

For complete specifications and recommended panel hole layout see [www.samtec.com?SCRUS](http://www.samtec.com?SCRUS)

**Insulator Material:**

PBT

**Contact Material:**

Phosphor Bronze

**Wire:**

20 AWG (Power)

25 AWG (Signal)

28 AWG (Drain)

**O-Ring:**

Silicone

**Operating Temp Range:**

-20 °C to +75 °C

**RoHS Compliant:**

Yes

**RECOGNITIONS**

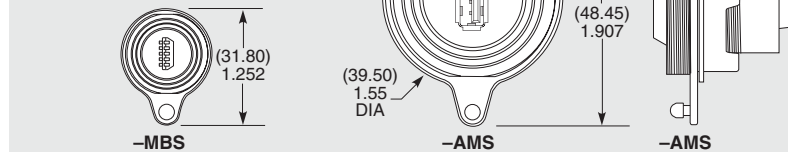
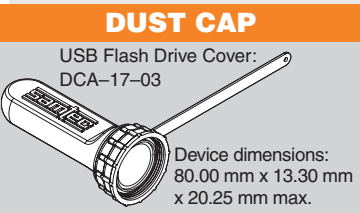
For complete scope of recognitions see [www.samtec.com/quality](http://www.samtec.com/quality)



**Note:**

Some lengths, styles and options are non-standard, non-returnable.

TYPE	SHELL SIZE	PLATING	WIRE LENGTH	END 1 OPTION	END 2 OPTION
<b>SCRUS</b> = Sealed Circular USB Receptacle Cable Assembly	<b>-17</b> (Standard USB only)  <b>-10</b> (Mini USB only)	<b>-G</b> = 30 μ" (0.76 μm) Gold on Contact, Nickel on Shell	<b>-00.25</b> = (0.25 m) 9.84" Cable  <b>-00.50</b> = (0.50 m) 19.68" Cable  Standard lengths (Assembled Length = Wire Length + (37.9 mm) 1.50")	<b>-AMS</b> = USB A Type, Sealed  <b>-BMS</b> = USB B Type, Sealed  <b>-MBS</b> = Mini USB B Type, Sealed	<b>-AM</b> = USB A Type, Not Sealed  <b>-BM</b> = USB B Type, Not Sealed  <b>-MB</b> = Mini USB B Type, Not Sealed  <b>-BC</b> = Blunt Cut



**OTHER SOLUTIONS**

- Termination for standard USB cable from panel-to-board See SCRUS Series.

Mates with:

SCPE

**SPECIFICATIONS**

For complete specifications and recommended panel hole layout see [www.samtec.com?SCRES](http://www.samtec.com?SCRES)

**Insulator Material:**

PBT

**Contact Material:**

Phosphor Bronze

**Shield Material:**

Phosphor Bronze

**Wire:**

24 AWG

**O-Ring:**

Silicone

**Overmold:**

PA66

**Current Rating:**

3.8 A per pin

(1 pin powered)

**Operating Temp Range:**

-40 °C to +70 °C

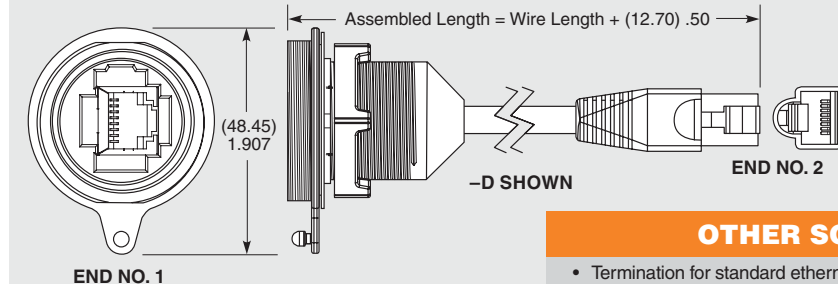
**RoHS Compliant:**

Yes

**Note:**

Some lengths, styles and options are non-standard, non-returnable.

TYPE	PLATING	WIRE LENGTH	END OPTION	C5E
<b>SCRES</b> = Sealed Circular Ethernet Receptacle Cable Assembly	<b>-G</b> = 50 μ" (1.27 μm) Gold on Contact, Nickel on Shell	<b>-00.25</b> = (0.25 m) 9.84" Cable  <b>-00.50</b> = (0.50 m) 19.68" Cable  Standard lengths	<b>-D</b> = Double Ended  <b>-BC</b> = Blunt Cut	<b>-C5E</b> = Cat 5e rating



**DUST CAP & PANEL PLUG**

- Dust Cap: DCA-17-01
- Panel Plug: SCPPA-17-01

**OTHER SOLUTIONS**

- Termination for standard ethernet cable from panel to board

*Due to technical progress, all designs, specifications and components are subject to change without notice.*