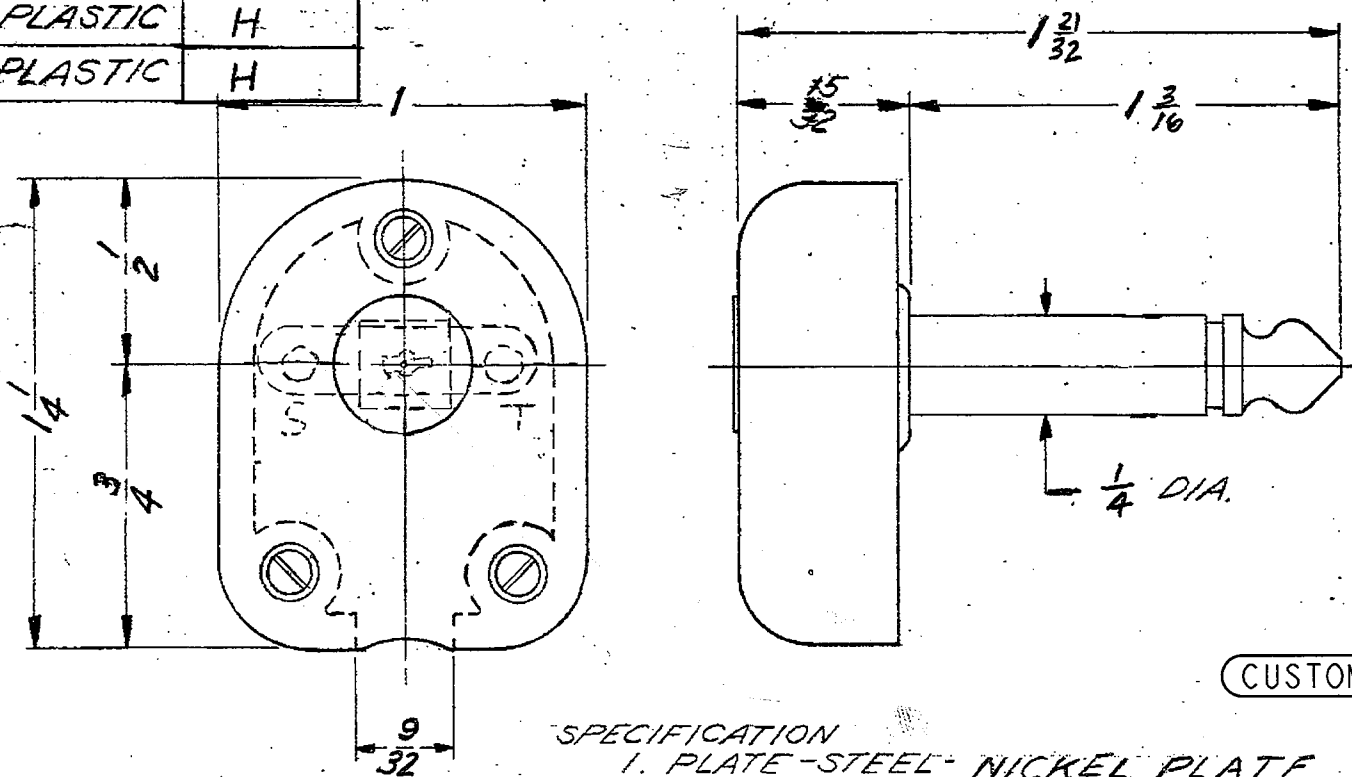


PART NO.	HANDLE	REV.
227	BLK. PLASTIC	H
229	RED PLASTIC	H

227  
229



CUSTOMER DRAWING

- SPECIFICATION**
1. PLATE-STEEL-NICKEL PLATE
  2. TIP & SLEEVE - BRASS - NI. PL.
  3. INSULATORS - NYLON & BAKELITE
  4. TERMINALS - BRASS - ELECTRO TIN PLATED PER -CZ

ISS	REV.	DATE	BY	REVISIONS
2		1/18/61	C.M.	ADDED NOTE #13145
3		1/19/61	W.H.	A INCOMPLETE PICTURE OF TERM. WAS
A		11/9/60	EB	ECO # 1347 DRAWN
B		6/22/61	VL	ELECTRO TIN PLATED
C		7-1/61	VL	PER -CZ WAS
D		12-7/61	VL	HOT TINNED
F		ES 1-11-61	ES	ECO # 14667
G		3/4/61	TA0	ECO # 14982
H		7/6/61	TA0	ECO # 14853

**NOTE**

- 1-DECIMAL DIMENSION ± .005.
- 2-FRACTIONAL DIMENSION ± 1/64.
- 3-ANGLES ± 1/2°.
- 4-REMOVE ALL BURRS.
- 5-DO NOT SCALE DRAWING.
- 6-ALL DIMENSIONS IN INCHES.
- 7-SUBJECT TO CHANGE WITHOUT NOTICE. ALWAYS OBTAIN NEW PRINT FOR EACH ORDER.
- 8-FOR THREADS USE PLUG AND RING GAGES ONLY.

**SWITCHCRAFT, INC.**  
5555 N. ELSTON  
CHICAGO 30, ILLINOIS

MATERIAL		DRAWN BY	DATE
SIZE	WIDTH	C.M.	1-18-61
MULT.	LBS. PER M	CHECKED	DATE
USED ON	FINISH	W.H.	1-19-61
		APPROVED	DATE
		L6	1-19-61
		REQ.	SCALE
		ISSUE	DATE
		H	
NAME		PART NO.	
2 COND. SOLDER TERM. FLAT PLUG		227	
		229	

(12) (16) (46)

# Mouser Electronics

Authorized Distributor

Click to View Pricing, Inventory, Delivery & Lifecycle Information:

[Switchcraft:](#)

[227](#) [229](#)