

CAB 3™ marking and isolating sleeves



For colour-marking cables and isolating lug tubes from 10 mm² to 300 mm²
Fitting and removal without tool before or after connection

Pack	Cat.Nos	Sleeves	
		Conductor Ø7.1 to 10.5 mm	
		Section 10 to 25 mm ²⁽¹⁾	
		Colour	Length (mm)
100	388 49	blue	20
100	388 50	black	
100	388 51	brown	
100	388 52	red	
100	388 53	yellow	
100	388 54	yellow/green	
		Conductor Ø10 to 13.5 mm	
		Section 25 to 50 mm ²⁽¹⁾	
		Colour	Length (mm)
50	388 55	blue	29.5
50	388 56	black	
50	388 57	brown	
50	388 58	red	
50	388 59	yellow	
50	388 60	yellow/green	
		Conductor Ø13 to 17 mm	
		Section 50 to 95 mm ²⁽¹⁾	
		Colour	Length (mm)
25	388 61	blue	38
25	388 62	black	
25	388 63	brown	
25	388 64	red	
25	388 65	yellow	
25	388 66	yellow/green	
		Conductor Ø16.5 to 23 mm	
		Section 95 to 185 mm ²⁽¹⁾	
		Colour	Length (mm)
20	388 67	blue	46
20	388 68	black	
20	388 69	brown	
20	388 70	red	
20	388 71	yellow	
20	388 72	yellow/green	
		Conductor Ø22.5 to 29 mm	
		Section 185 to 300 mm ²⁽¹⁾	
		Colour	Length (mm)
10	388 73	blue	55
10	388 74	black	
10	388 75	brown	
10	388 76	red	
10	388 77	yellow	
10	388 78	yellow/green	

(1) Correspondence between cross-sections given as a guide only according to the types of cables and lugs

CAB 3™ marking and isolating sleeves

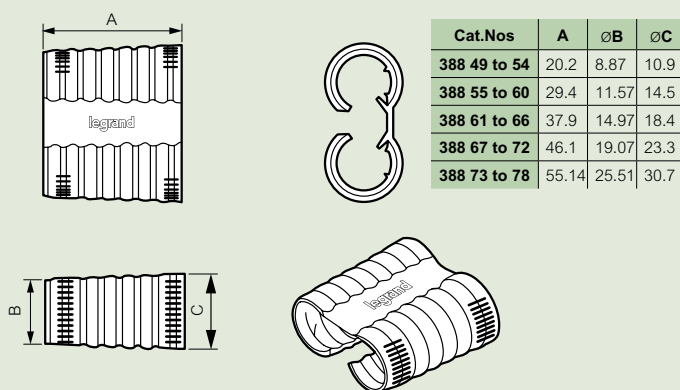
■ Characteristics

Material PA 6.6 halogen-free
Installation temperature : - 5 °C to + 40 °C
Operating temperature : - 25 °C to + 105 °C
Storage temperature : - 40 °C to + 70 °C
Glow-wire flammability resistance : 960 °C
Dielectric cross resistance : 6 KV



Supplied in dispenser box

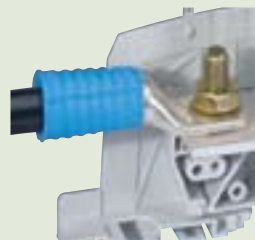
■ Dimensions (mm)



■ Installation



■ Example of use



Example of use of sleeve Cat.No 388 61 on a power terminal block



Use of a sleeve on a wired DPX 250



Connection, power devices, etc

see p. 68 to 116

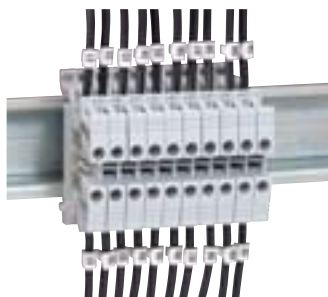
CAB 3™ marking system for wiring and Viking 3 terminal blocks



381 51



381 64



Same markers for cable and terminal blocks



Technical characteristics (p. 375)

Strips of 20 markers
For marking wiring or Viking 3 terminal blocks

Pack	Cat.Nos	Markers for wiring 0.5 to 1.5 mm ² cross-section and terminal blocks
240	381 50	Numbers: black on white background (available in black on yellow background on request) 01 to 20
240	381 51	21 to 40
240	381 52	41 to 60
240	381 53	61 to 80
240	381 54	81 to 100
240	381 55	Blank



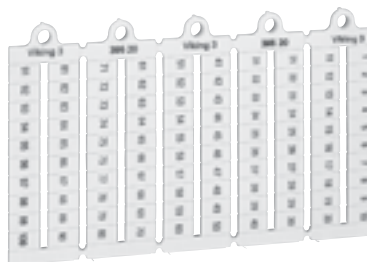
381 51

Pack	Cat.Nos	Markers for wiring 1.5 to 2.5 mm ² cross-section and terminal blocks
240	381 60	Numbers: black on white background (available in black on yellow background on request) 01 to 20
240	381 61	21 to 40
240	381 62	41 to 60
240	381 63	61 to 80
240	381 64	81 to 100
240	381 65	Blank

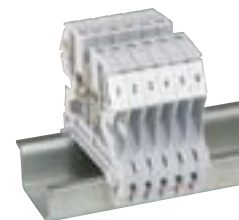


381 64

marking label sheets for Viking 3 terminal blocks



395 20



395 05 on Viking 3 terminal blocks



395 98

Pack	Cat.Nos	Blank markers
1000	395 00	Displayed by sheet of 100 pre-cut markers
1000	395 01	Manual marking or via Logicab 2 (p. 378)
1000	395 02	For blocks 5 mm pitch
		For blocks 6 mm pitch
		For blocks 8 mm pitch

Numbers Reading of installed marker

Horizontal format		
Pitch of 5 mm		
1000	395 05	From 1 to 10 (10 times)
1000	395 06	From 11 to 20 (10 times)
1000	395 07	From 21 to 30 (10 times)
1000	395 08	From 31 to 40 (10 times)
1000	395 09	From 1 to 50 (2 times)
1000	395 10	From 1 to 100
1000	395 11	From 101 to 200
Pitch of 6 mm		
1000	395 15	From 1 to 10 (10 times)
1000	395 16	From 11 to 20 (10 times)
1000	395 17	From 21 to 30 (10 times)
1000	395 18	From 31 to 40 (10 times)
1000	395 19	From 1 to 50 (2 times)
1000	395 20	From 1 to 100
1000	395 21	From 101 to 200

Pack	Cat.Nos	Black felt tip pen
10	395 98	Indelible for marking

Logicab 2 (p. 378)

CAB 3™ marking system

markers for wiring and Viking 3 terminal blocks



Perfect alignment of label holders



382 12



Terminal block with CAB 3 markers and label-holders

Markers for wiring 0.15 to 0.5 mm² and 0.5 to 1.5 mm² cross-section and terminal blocks

On Viking 3 terminal blocks
 - 4 markers 0.15 to 0.5 mm² max.
 - 3 markers 0.15 to 1.5 mm² max.

Pack:
 - Up to 0.5 mm²: strips of 25 markers
 From 0.5 mm² to 2.5 mm²: strips of 30 markers
 - Upper 2.5 mm²: strips of 20 markers
 Price per marker

Digits: international colour code

- | | |
|---|--------|
| 0 | Black |
| 1 | Brown |
| 2 | Red |
| 3 | Orange |
| 4 | Yellow |
| 5 | Green |
| 6 | Blue |
| 7 | Purple |
| 8 | Grey |
| 9 | White |



381 06

Letters: black on yellow background

- | |
|---|
| A |
| B |
| C |
| D |
| E |
| F |
| G |
| H |
| I |
| J |
| K |
| L |
| M |
| N |
| O |
| P |
| Q |
| R |
| S |
| T |
| U |
| V |
| W |
| X |
| Y |
| Z |

Conventional symbols: black on yellow background

- | |
|---|
| / |
| • |
| + |
| - |
| ~ |
| ≡ |
| ± |



383 17



381 28



381 43

Pack	Cat.Nos
1000 1200	381 00 382 10
1000 1200	381 01 382 11
1000 1200	381 02 382 12
1000 1200	381 03 382 13
1000 1200	381 04 382 14
1000 1200	381 05 382 15
1000 1200	381 06 382 16
1000 1200	381 07 382 17
1000 1200	381 08 382 18
1000 1200	381 09 382 19
300	381 10 383 00
300	381 11 383 01
300	381 12 383 02
300	381 13 383 03
300	381 14 383 04
300	381 15 383 05
300	381 16 383 06
300	381 17 383 07
300	381 18 383 08
300	381 19 383 09
300	381 20 383 10
300	381 21 383 11
300	381 22 383 12
300	381 23 383 13
300	381 24 383 14
300	381 25 383 15
300	381 26 383 16
300	381 27 383 17
300	381 28 383 18
300	381 29 383 19
300	381 30 383 20
300	381 31 383 21
300	381 32 383 22
300	381 33 383 23
300	381 34 383 24
300	381 35 383 25
300	381 40 382 70
300	381 41 382 71
300	381 42 382 72
300	381 43 382 73
300	381 44 382 74
300	381 45 382 75
300	381 46 382 76

Markers for wiring 1.5 to 2.5 mm² and 4 to 6 mm² cross-section

Pack:
 - Up to 0.5 mm²: strips of 25 markers
 From 0.5 mm² to 2.5 mm²: strips of 30 markers
 - Upper 2.5 mm²: strips of 20 markers
 Price per marker

Digits: international colour code

- | | |
|---|--------|
| 0 | Black |
| 1 | Brown |
| 2 | Red |
| 3 | Orange |
| 4 | Yellow |
| 5 | Green |
| 6 | Blue |
| 7 | Purple |
| 8 | Grey |
| 9 | White |



382 32



382 26

Letters: black on yellow background

- | |
|---|
| A |
| B |
| C |
| D |
| E |
| F |
| G |
| H |
| I |
| J |
| K |
| L |
| M |
| N |
| O |
| P |
| Q |
| R |
| S |
| T |
| U |
| V |
| W |
| X |
| Y |
| Z |



383 46



383 79

Conventional symbols: black on yellow background

- | |
|---|
| / |
| • |
| + |
| - |
| ~ |
| ≡ |
| ± |



Pack	Cat.Nos
1200 800	382 20 382 30
1200 800	382 21 382 31
1200 800	382 22 382 32
1200 800	382 23 382 33
1200 800	382 24 382 34
1200 800	382 25 382 35
1200 800	382 26 382 36
1200 800	382 27 382 37
1200 800	382 28 382 38
1200 800	382 29 382 39
300	383 30 383 60
300	383 31 383 61
300	383 32 383 62
300	383 33 383 63
300	383 34 383 64
300	383 35 383 65
300	383 36 383 66
300	383 37 383 67
300	383 38 383 68
300	383 39 383 69
300	383 40 383 70
300	383 41 383 71
300	383 42 383 72
300	383 43 383 73
300	383 44 383 74
300	383 45 383 75
300	383 46 383 76
300	383 47 383 77
300	383 48 383 78
300	383 49 383 79
300	383 50 383 80
300	383 51 383 81
300	383 52 383 82
300	383 53 383 83
300	383 54 383 84
300	383 55 383 85
300	382 80 382 90
300	382 81 382 91
300	382 82 382 92
300	382 83 382 93
300	382 84 382 94
300	382 85 382 95
300	382 86 382 96

CAB 3™ marking system

accessories



Pack	Cat.Nos	Accessories CAB 3										
		Marker-holders										
		For cables cross-section from 10 mm ² to 70 mm ² Capacity: 8 digits, letters or symbols markers from 0.5 to 1.5 mm ² or 1.5 to 2.5 mm ² cross section Black, cross-section (mm ²)										
100	384 90	10 to 16										
50	384 91	25 to 35										
50	384 92	50 to 70										
		Support for markers										
		Can be clipped on Viking 3 terminal blocks Capacity: 7 markers from 0.15 to 0.5 mm ² 6 markers from 0.5 to 1.5 mm ²										
		Transparent applicators										
		For rapid selection and application of markers onto cable										
		<table border="1"> <thead> <tr> <th>For markers cross-section (mm²)</th> <th>Applicator colour for identification of cross-section</th> </tr> </thead> <tbody> <tr> <td>0.15 to 0.5</td> <td>CAB 3</td> </tr> <tr> <td>0.5 to 1.5</td> <td>CAB 3</td> </tr> <tr> <td>1.5 to 2.5</td> <td>CAB 3</td> </tr> <tr> <td>4 to 6</td> <td>CAB 3</td> </tr> </tbody> </table>	For markers cross-section (mm ²)	Applicator colour for identification of cross-section	0.15 to 0.5	CAB 3	0.5 to 1.5	CAB 3	1.5 to 2.5	CAB 3	4 to 6	CAB 3
For markers cross-section (mm ²)	Applicator colour for identification of cross-section											
0.15 to 0.5	CAB 3											
0.5 to 1.5	CAB 3											
1.5 to 2.5	CAB 3											
4 to 6	CAB 3											
10	383 94	0.15 to 0.5										
10	383 95	0.5 to 1.5										
10	383 96	1.5 to 2.5										
10	383 97	4 to 6										
		Set of markers										
1	382 01	0.15 to 0.5 mm ² : 2 500 markers + 10 applicators (250 digits from 0 to 9)										
1	382 02	0.5 to 1.5 mm ² : 3 000 markers + 10 applicators (300 digits from 0 to 9)										
1	382 03	1.5 to 2.5 mm ² : 3 000 markers + 10 applicators (300 digits from 0 to 9)										
1	382 04	4 to 6 mm ² : 2 000 markers + 10 applicators (200 digits from 0 to 9)										
		On-site toolbox										
1	382 00	With removable tray for CAB 3 markers and applicators, Starfix ferrules... Height 85 mm, depth 280 mm, width 450 mm Metal, padlockable										

Starfix ferrules (p. 370)

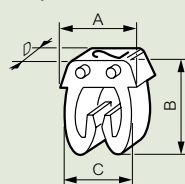
CAB 3™ marking system

for wiring and Viking 3 terminal blocks

■ Dimensions

Markers

Polyamide 6/6



Dimensions	Cable cross-section (mm ²)			
	0.15 to 0.5	0.5 to 1.5	1.5 to 2.5	4 to 6
A (mm)	5	5	5.6	8
B (mm)	5.05	6.4	7.6	9.6
C (mm)	3.7	4.3	4.9	7.1
D (mm)	2.3	3	3	3
Ø mini/maxi (mm)	0.8/2.2	2.2/3	2.8/3.8	4.3/5.3

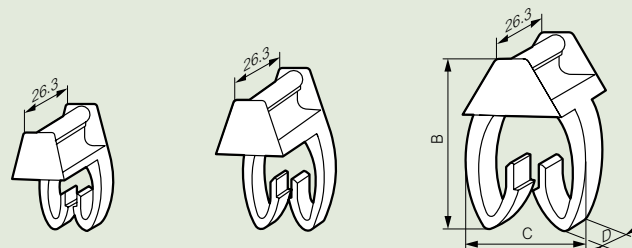
Cat.Nos 381 50 to 381 55 et 381 60 to 381 65: no liking stud.
D = 6 mm

Marker holders

Cat.No 384 90

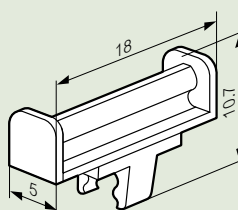
Cat.No 384 91

Cat.No 384 92



Dim.	Section of cable for marking (mm ²)		
	10 to 16	25 to 35	50 to 70
A (mm)	18	24.3	27.2
B (mm)	8.9	12.2	17.2
C (mm)	7	7	10

Support for markers Cat.No 383 92

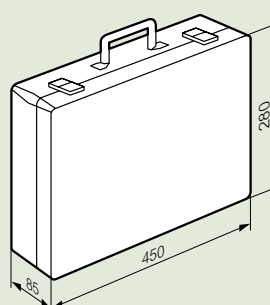


On cable with marker-holder Cat.No 384 92



■ Characteristics and dimensions of on-site toolbox

Cat.No 382 00



Bottom tray consists of:

- 8 medium slots (each slot takes 1 box of CAB 3)
- 1 large slot

Top tray consists of:

- 12 small slots (<=> approx. 6 boxes of CAB 3)
 - 1 medium slot for applicators
- Capacity: approx. 15000 CAB 3 markers

On terminal blocks with support Cat.No 383 92



On power terminal blocks



Memocab™ marking system for wiring



Marking system with closed ring
High resistance in very aggressive environments

Pack	Cat.Nos	Marker-holders for wiring			
Length of marking : 12 mm (4 markers)					
		Section (mm ²)		Ø (mm)	
		min.	max.	min.	max.
1000	379 27	0.25	1.5	1.3	3.5
1000	379 28	0.75	4	2.3	4.8
Length of marking : 15 mm (6 markers)					
1000	379 30	0.25	1.5	1.3	3.5
1000	379 31	0.75	4	2.3	4.8
500	379 32	4	16	4.2	7.6
Length of marking : 18 mm (7 markers)					
1000	379 36	0.25	1.5	1.3	3.5
1000	379 37	0.75	4	2.3	4.8
500	379 38	4	16	4.2	7.6
500	379 33	16	50	7.6	12.5
200	379 34	50	95	12.5	19
100	379 35	95	300	19	29.5
Length of marking : 30 mm (12 markers)					
500	379 40	0.25	1.5	1.3	3.5
500	379 41	0.75	4	2.3	4.8
200	379 42	4	16	4.2	7.6
200	379 43	16	50	7.6	12.5
Length 500 mm (to be cut)					
10	379 44	0.75	4	2.3	4

Pack	Cat.Nos	Marker-holders for simultaneous marking of both ends			
Pre-cut label holders in rolls					
Length of marking : 18 mm (7 markers)					
		Section (mm ²)		Ø (mm)	
		min.	max.	min.	max.
1000	379 20	0.25	1.5	1.3	3.5
1000	379 21	0.75	4	2.3	4.8
500	379 22	4	16	4.2	7.6
500	379 10	0.25	1.5	1.3	3.5
500	379 11	0.75	4	2.3	4.8

Pack	Cat.Nos	Marker-holders for cables	
100	377 12	Fixing with Colring cable ties	
200	387 42	Marker holder for 4 x 30 mm marker Can be fixed with Colring cable ties 2.4 mm or 3.5 mm	

Pack	Cat.Nos	Marker-holders for all devices	
100	377 10	Adhesive Length of marking : 17.5 mm (7 markers)	

Pack	Cat.Nos	Accessories	
1	379 91	Double dispenser board For 48 strips of markers (supplied empty)	
10	379 90	Selecting prong For selecting the markers and placing them in the label holder	
10	379 92	For 30 mm marker holders	
10	379 93	For 15 mm marker holders	
10	379 89	Double for 30 or 18 mm marker holders (for simultaneous marking of both ends)	
10	379 93	Extractor For 15 mm marker holders	

Marking kit, consult us
Colring cable ties (p. 366)

These products are part of industrial equipment > See p. 266-267

Memocab™ marking system

for wiring (continued)



378 01 to 378 10



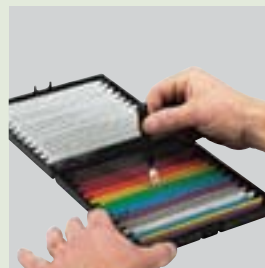
378 05 + 2 x 378 06 + 378 01
+ 378 10 + 378 09 + 378 08
in a label holder Cat.No 379 38

Pack	Cat.Nos	Markers
Numbers on colour background		
Black or white marking (international colour code)		
600	378 01	Purple 7
600	378 02	Orange 3
600	378 03	White 9
600	378 04	Grey 8
600	378 05	Green 5
600	378 06	Yellow 4
600	378 07	Brown 1
600	378 08	Blue 6
600	378 09	Black 0
600	378 10	Red 2
Numbers on white background		
Black marking		
600	377 80	0
600	377 81	1
600	377 82	2
600	377 83	3
600	377 84	4
600	377 85	5
600	377 86	6
600	377 87	7
600	377 88	8
600	377 89	9
Capital letters		
Black marking on white background		
240	378 26	A
240	378 27	B
240	378 28	C
240	378 29	D
240	378 30	E
240	378 31	F
240	378 32	G
240	378 33	H
240	378 34	I
240	378 35	J
240	378 36	K
240	378 37	L
240	378 38	M
240	378 39	N
240	378 40	O
240	378 41	P
240	378 42	Q
240	378 43	R
240	378 44	S
240	378 45	T
240	378 46	U
240	378 47	V
240	378 48	W
240	378 49	X
240	378 50	Y
240	378 51	Z
Conventional symbols		
Black marking on white background		
240	379 54	/
240	379 55	•
240	379 56	+
240	379 57	-
240	379 58	~
240	379 59	≡
240	379 60	⊥

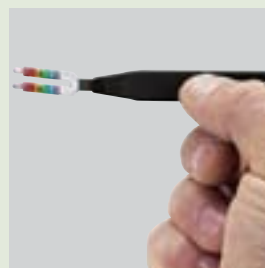
Memocab™ marking system

for wiring

Installation



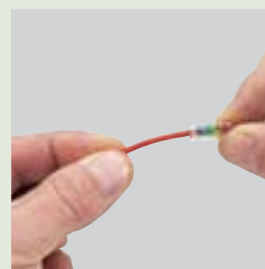
1 Simultaneous marking of both ends



2 Use of double selecting prong



3 Installation in double marker-holder



The double strip can be used on site, where each marker-holders of both side will be placed on conductors

Logicab™ 2 universal marking system

for Memocab, Duplix, adhesive markers, control and signalling devices, terminal blocks



Technical characteristics (p. 381)

Pack	Cat.Nos	Flatbed plotter kit
1	385 40	For editing and printing markings on a flatbed plotter to identify equipment components: devices, wiring, terminal strips, cables, adhesive labels Composition: - 1 program compatible with Windows 2000 / XP - 1 A3 flatbed plotter for marking blank markers - 1 positioning frame taking the various marker sheet supports - 4 sheet supports (385 27/28/30/32) - 1 set of markers - 1 pen Ø0.35 mm - 1 PC/plotter link cord - 1 power supply 100 - 240 V~ 50/60 Hz / 24 V= 1.4 A maxi - 1 protection cover

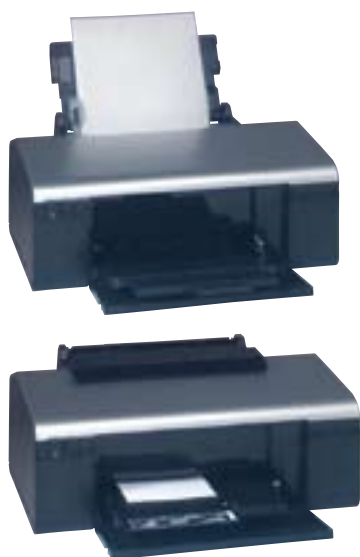
Pack	Cat.Nos	Marking equipment
10	385 47	Black pen Waterproof, fine tip Use with adaptor Cat.No 385 48
1	385 45	Ø0.25 mm for harsh environment
1	385 46	Ø0.35 mm for harsh environment
1	385 48	Adaptor for black pen For using black pen Cat.No 385 47 with flatbed plotter Logicab 2
1	385 38	Cleaning solvent Bottle 30 ml
5	385 41	Plotter maintenance kit Composed of 4 pen holders for magazine, 1 releasing key and initialising frame

Pack	Cat.Nos	Marker sheet supports
5	385 27	For Memocab markers
4	385 32	For Duplix markers
5	385 28	For adhesive markers and control and signalling devices
4	385 30	For Viking 3 markers Cat.Nos 395 00/01/02
4	385 31	For competitor terminal markers, Cat.Nos 385 64/65/66/67

Pack	Cat.Nos	Blank markers
840	385 03	Memocab - for wiring and all device types For use together with Memocab marker-holders (p. 376)
840	385 05	White Max. no of characters No of markers / sheet
420	385 08	White 4 (11.5 x 4 mm) 28
		White 8 (17.5 x 4 mm) 28
		White 16 (29 x 4 mm) 14
100	385 09	Duplix - for cables 2 white markers Fixing by Colring tie, width 2.4 or 3.5 mm UV protection with cover, Cat.No 384 97 (p. 384)
800	385 07	White adhesives for all device types Optimum holding of support on plastics and lacquered sheet
240	385 50	17.5 x 8 mm white 26 x 17 mm white
1000	395 00	For Viking 3 terminal blocks Available in sheets of 100 markers
1000	395 01	For blocks 5 mm pitch
1000	395 02	For blocks 6 mm pitch For blocks 8 mm pitch
10	243 02	For Osmoz
10	243 07	● Alu - standard model ● Alu - large model
1000	385 64	For competitors blocks
1000	385 65	Entrelec / Wago / Phoenix - Pitch 5
1000	385 66	Entrelec / Wago / Phoenix - Pitch 6
1000	385 67	Weidmüller - Pitch 5 Weidmüller - Pitch 6
480	385 11	For control and signalling devices Marker 8 x 27 mm For use with marker-holder, Cat.No 385 16
192	385 16	Marker-holder 8 x 27 mm
192	385 14	Transparent cover for marker, Cat.No 385 11
240	385 12	Marker 15 x 27 mm For use with marker-holder, Cat.No 385 17
192	385 17	Marker-holder 15 x 27 mm
192	385 15	Cover for marker, Cat.No 385 12

Logicab™ 2 universal marking system

printer kit for cables, modular Lexic devices, VDI blocks, data sockets, control and signalling devices



388 00



387 14 + 387 16



387 15 + 387 17 fixed with Colring cables ties



387 36 on Mosaic Data socket



387 37 on 4 connectors patch unit



387 31

387 27



387 20 + 203 99 installed on a faceplate and 387 31/32 on Lexic modular equipment

Technical characteristics (p. 383)

Pack	Cat.Nos	Printer kit
1	388 00	<p>For editing and printing rigid or flexible plastic markings on a colour inkjet printer The markings can be used to identify equipment components for indoor use, such as: cables, modular Lexic devices, VDI blocks, data sockets, control and signalling devices Printing quality and durability guaranteed only for an use with the printer kit</p> <p>Composition:</p> <ul style="list-style-type: none"> - 1 Logicab software, Windows 2000 and XP compatible - 1 A4 inkjet colour printer 220/240 V~ equipped with black and colour ink cartridges for printing on blank markings - 1 positioning frame for rigid markings - 1 positioning frame for Memocab wire markings - 1 set of markings - 1 USB connection cable PC to printer - 1 power supply cable

Pack	Cat.Nos	Blank markers for printer kit
		Pre-cut, white plastic, rigid or flexible markers for black or colour inkjet printing
		For wiring
		To be used with corresponding Memocab marker-holders (p. 376)
480	387 10	Marker for 4 x 12 mm Memocab marker-holders
640	387 11	Marker for 4 x 18 mm Memocab marker-holders
240	387 12	Marker for 4 x 30 mm Memocab marker-holders
		For cables
310	387 14	Marker for cable 37 x 9.5 mm To be used with label holder Cat.No 387 16
224	387 16	Marker-holder for cable 50 x 10 mm Can be fixed with Colring cable ties 2.4 mm or 3.5 mm
70	387 15	Marker for cable 70 x 15 mm To be used with label holder Cat.No 387 17
96	387 17	Marker-holder for cable 88 x 15 mm Can be fixed with Colring cable ties 2.4 mm or 3.5 mm
		For modular devices and other equipments
		Rigid plastic self-adhesive markers
380	387 21	For 1-module Lexic devices
150	387 22	For 2-module Lexic devices
100	387 23	For 3-module Lexic devices
50	387 24	For 4-module Lexic devices
50	387 26	For 6-module Lexic devices
980	387 27	Adhesive marker 6.5 x 17.5 mm
220	387 28	Adhesive marker 17 x 26 mm

Pack	Cat.Nos	Blank markers for printer kit (continued)
		For Cat.No. 388 00 modular devices and other equipments
		Flexible markers to be inserted into the labelholder of each device
720	387 31	For 1-module Lexic devices
288	387 32	For 2-module Lexic devices
192	387 33	For 3-module Lexic devices
144	387 34	For 4-module Lexic devices
70	387 20	Clip-on holder for row on faceplate of modular cabinets To be used with Cat.No 203 99 (p. 196)
360	387 35	For 1-module Mosaic data socket, 19 x 16 mm
180	387 36	For 2-module Mosaic data socket, 40.5 x 16 mm
132	387 37	For telephone/Ethernet patch units 4 RJ connectors
210	387 38	For telephone patch units, 8 RJ connectors
		For other control and signalling units
500	387 08	For 8 x 27 mm control and signalling units To be used with marker holder Cat.No 385 16 and transparent cover Cat.No 385 14
192	385 16	Marker-holder for 8 x 27 mm control and signalling units To be used with Cat.No 387 08
192	385 14	Transparent cover for marker-holder Cat.No 385 16
260	387 09	For 15 x 27 mm control and signalling units To be used with marker holder Cat.No 385 17 and transparent cover Cat.No 385 15
192	385 17	Marker-holder for 15 x 27 mm control and signalling units To be used with Cat.No 387 09
192	385 15	Transparent cover for marker-holder Cat.No 385 17



These products are part of industrial equipment > See p. 266-267

Logicab™ 2 universal marking system

printer kit for cables, modular Lexic devices, VDI blocks, data sockets, control and signalling devices (continued)



387 18



387 30 with protective cover Cat.No 387 39



387 04



387 13 with markers Cat.No 395 00 (p. 373)



387 13 with markers Cat.No 395 01 (p. 373) on Viking 3 terminal blocks



379 38 with marker Cat.No 387 11 (p. 379)

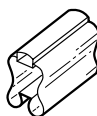
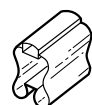


Technical characteristics (p. 383)

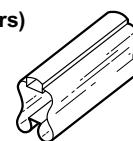
For editing and printing rigid or flexible plastic markings on a colour inkjet printer. The markings can be used to identify equipment components for indoor use, such as: cables, modular Lexic devices, VDI blocks, data sockets, control and signalling devices. Printing quality and durability guaranteed only for an use with the printer kit Cat.No 388 00 (p. 379)

Pack	Cat.Nos	Blank markers for printer kit (continued)
		Pre-cut, white plastic, rigid or flexible markers for black or colour inkjet printing
		For stay-put Ø22 mm mushroom heads (Osmoz)
		Self-adhesive markers
30	387 18	Ø60 mm
10	387 19	Ø80 mm
		For other signalling functions
40	387 25	Self-adhesive rigid identification plate 69 x 29 mm To be used with cover Cat.No 387 29
10	387 29	Protective cover 70 x 30 mm for identification plate Cat.No 387 25
20	387 30	Self-adhesive rigid identification plate 99 x 59 mm To be used with cover Cat.No 387 39
10	387 39	Protective cover 100 x 60 mm for identification plate Cat.No 387 30
40	387 04	Self-adhesive 50 mm warning triangle plate
10	387 05	Multi-purpose self-adhesive plate 105 x 99 (can be customized)
		For Viking 3 or other terminal blocks
1920	387 13	Self-adhesive label for terminal blocks To be used with Logicab markers Cat.Nos 385 64/65/66/67 or 395 00/01/02 (p. 378)
700	387 43	For blocks of 5 mm
525	387 44	For blocks of 6 mm

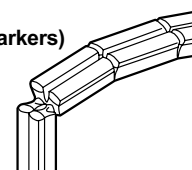
Pack	Cat.Nos	Memocab marker-holders for wiring (continued)
		For use with Logicab markers for wiring Cat.No 387 10/11/12 (p. 379)
		Length of marking: 12 mm (4 markers)
		Section (mm ²) Ø (mm)
1000	379 27	0.25 1.5 1.3 3.5
1000	379 28	0.75 4 2.3 4.8
		Length of marking: 15 mm (6 markers)
1000	379 30	0.25 1.5 1.3 3.5
1000	379 31	0.75 4 2.3 4.8
500	379 32	4 16 4.2 7.6
		Length of marking: 18 mm (7 markers)
1000	379 36	0.25 1.5 1.3 3.5
1000	379 37	0.75 4 2.3 4.8
500	379 38	4 16 4.2 7.6
500	379 33	16 50 7.6 12.5
200	379 34	50 95 12.5 19
100	379 35	95 300 19 29.5



Pack	Cat.Nos	Memocab marker-holders for wiring (continued)
		For use with Logicab markers for wiring Cat.No 387 10/11/12 (p. 379)
		Length of marking: 30 mm (12 markers)
		Section (mm ²) Ø (mm)
500	379 40	0.25 1.5 1.3 3.5
500	379 41	0.75 4 2.3 4.8
200	379 42	4 16 4.2 7.6
200	379 43	16 50 7.6 12.5



Pack	Cat.Nos	Memocab marker-holders for wiring for simultaneous marking of both ends
		For use with Logicab markers for wiring Cat.Nos 387 10/11/12 (p. 379)
		Pre-cut label holders in rolls
		Length of marking: 18 mm (7 markers)
		Section (mm ²) Ø (mm)
1000	379 20	0.25 1.5 1.3 3.5
1000	379 21	0.75 4 2.3 4.8
500	379 22	4 16 4.2 7.6
		Length of marking: 30 mm (12 markers)
500	379 10	0.25 1.5 1.3 3.5
500	379 11	0.75 4 2.3 4.8



Pack	Cat.Nos	Memocab marker-holders for cables
		For use with Logicab markers for wiring Cat.Nos 387 10/11/12 (p. 379)
		Fixing with Colring cable ties
100	377 12	Length of marking 20 mm
200	387 42	Length of marking 30 mm



These products are part of industrial equipment > See p. 266-267

Logicab™ 2 universal marking system

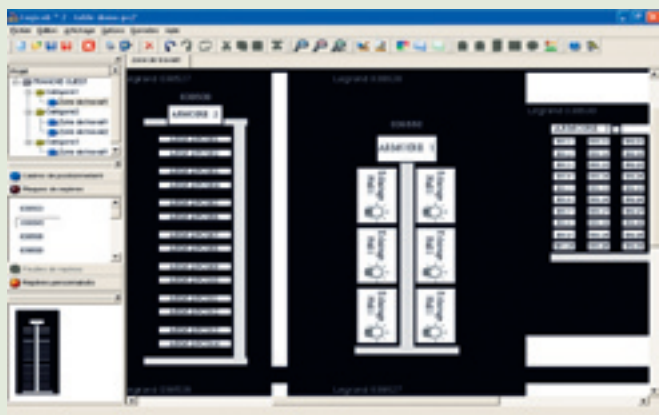
flatbed plotter kit

■ Edit

Software

For PC equipped with Intel Pentium II processor (or equivalent) or higher, running Windows 2000 or XP, 128 MB RAM (512 MB recommended)

- Input of labels on markers and display of the result
- Option to create markers automatically, to sort and organise them
- Recovery of data directly from diagram software without re-inputting (import of any ASCII mode file or files from IGE-XAO software in FNR mode)



■ Print

Marking with flatbed plotter



- Work area 305 x 440 mm
- Max print speed 40 cm/s
- Power supply via separate mains adapter
- Parallel port
- USB 1.1 port
- Storage magazine for 4 pens
- Pen initialising zone

Marking equipment



Pens with no risk of smears
Double seal caps to prevent the ink drying out
Industrial quality ink

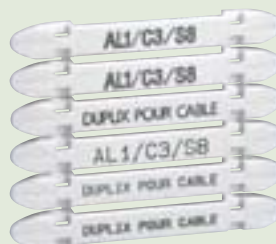
■ Mark

Wiring marker



For use with Memocab marker-holders, length 12, 18, 30 mm (p. 376)

Duplex type cable marker



Attached by Colring tie, width 2.4 or 3.5 (p. 365)

Logicab™ 2 universal marking system

flatbed plotter kit (continued)

Logicab 2 universal marking system for all electrical installations: Memocab and Duplix wire and cable markers, markers for wiring devices, control and signalling devices, terminal blocks

Wiring device marker



Adhesive markers (17.5 x 8 or 26 x 17 mm) for all device types

Markers for Osmoz

Example of blank markers Cat.No 243 07 on marker sheet support Cat.No 385 28 (p. 378)



Use with Cat. Nos 243 15/16/18 (p. 330)

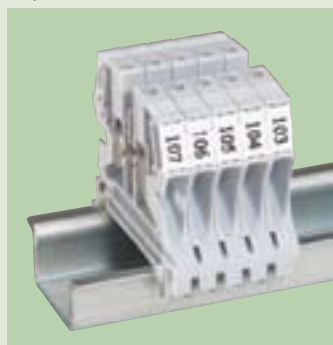
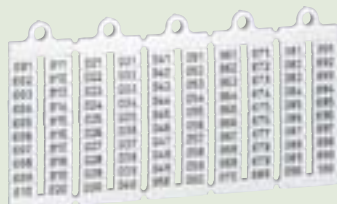
Control and signalling device marker



For use with universal marker-holders, diameter 22.5 and covers (8 x 27 or 15 x 27 mm)

Terminal block marker

Viking 3 terminal block markers, pitch 5, 6 and 8



Blank markers for competitors blocks, 5 and 6 pitch

Entelec, Wago, Weidmüller, Phœnix

		Marker 385 66 5 pitch	Marker 385 67 6 pitch
Weidmüller	screws	WDU 2.5 series	WDU 4 series
	spring	ZDU 2.5 series	ZDU 4 series Strips-mounting
		Marker 385 64 5 pitch	Marker 385 65 6 pitch
Entelec	screws	MA 2,5/5 series	MA 4/6 series
Wago	spring	280 series 281 series	280 series 281 series
Phœnix Contact	screws	UT 2.5 series	UT 4 series
	spring	ST 2.5 series Central fixing on terminal block	ST 4 series Central fixing on terminal block

Logicab™ 2 universal marking system printer kit

Logicab 2 universal marking system for all electrical installations. The colour inkjet printer kit is used for editing and printing rigid or flexible plastic markings. The markings can be used to identify equipment components for indoor use, such as : cables, modular Lexic devices, VDI blocks, data sockets, control and signalling devices. Printing quality and durability is guaranteed only for an use with the printer kit Cat.No 388 00

■ Editing

Software

For PC equipped with Intel Pentium II processor (or equivalent) or higher, running Windows 2000 or XP, 128 Mb RAM (512 Mb recommended)

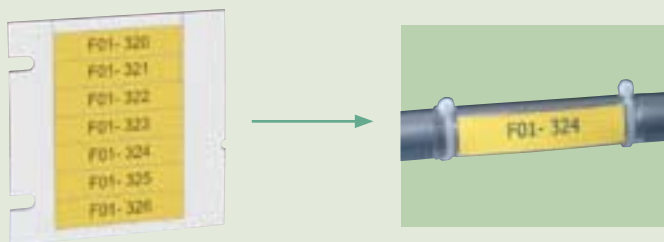
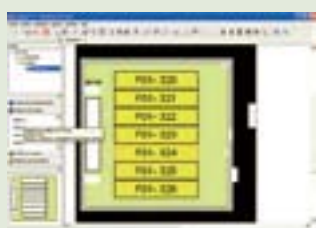
- Input of labels on markers and display of the result
- Option to create markers automatically, to sort and organize them
- Importing data directly from diagram software without re-inputting (import of any ASCII mode file or files from IGE-XAO software in FNR mode)



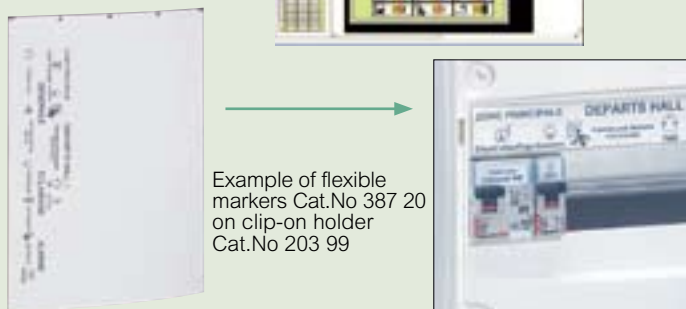
■ Example of use



Positioning frame for rigid markers



Example of markers Cat.No 387 15 installed in a marker holder



Example of flexible markers Cat.No 387 20 on clip-on holder Cat.No 203 99

■ Flexible markers

	Markers	Dimensions (mm) width x height	Self-adhesive	Marker-holders		
Lexic	387 31	1 module	13 x 11,5	no	-	
	387 32	2 modules	32 x 11,9	no	-	
	387 33	3 modules	49.5 x 11.9	no	-	
	387 34	4 modules	66.6 x 11.9	no	-	
	387 20	13 modules	234 x 26.5	no	203 99	
Mosaic	387 35	1 module	19 x 16	no	-	
	387 36	2 modules	40 x 16	no	-	
VDI	387 37	4 connectors	66.6 x 13	no	-	
	387 38	8 connectors	66.5 x 8	no	-	
Viking 3	387 13		189.1 x 11	yes	5 mm	395 00
					6 mm	395 01
					8 mm	395 02
Entrelec	387 13		189.1 x 11	yes	5 mm	385 64
					6 mm	385 65
Weidmüller	387 13		189.1 x 11	yes	5 mm	385 66
					6 mm	385 67

■ Rigid markers

	Markers	Dimensions (mm) width x height	Self-adhesive	Marker-holders	
Cables	387 10	3 x 11	no	379 27/28/30/31/32	
				379 44 (to be cut) (p. 376)	
	387 11	3 x 17	no	379 20/21/22/33/34	
				379 35/36/37/38	
				379 44 (to be cut) (p. 376)	
	387 12	3 x 29	no	377 10 (adhesive)	
377 12 (for cables)					
	387 14	37 x 9,5	no	387 16	
	387 15	70 x 15	no	387 17	
Lexic	387 21	1 module	13 x 11.5	yes	-
	387 22	2 modules	32 x 11.5	yes	-
	387 23	3 modules	48.5 x 11.5	yes	-
	387 24	4 modules	67 x 11.5	yes	-
	387 26	6 modules	99 x 11.5	yes	-
Viking 3	387 43	5 pitch	10.2 x 5.1	no	-
	387 44	6 pitch	10.2 x 6.1	no	-
Other equipments	387 27	17.5 x 6.5	yes	-	
	387 28	26 x 17	yes	-	
Mushroom heads (Osmoz)	387 18	Ø60	yes	-	
	387 19	Ø80	yes	-	
Rigid identification plate	387 25	57 x 30	yes	protective cover 387 29	
	387 30	86 x 59	yes	protective cover 387 39	
	387 04	triangle 50	yes	-	
	387 05	99 x 105	yes	-	
Other CSU	387 08	8 x 27	no	385 16 + 385 14	
	387 09	15 x 27	no	385 17 + 385 15	

Duplix™ marking system for cables



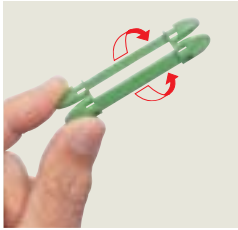
Cat.No 384 52 with label and label-holder Cat.No 384 98



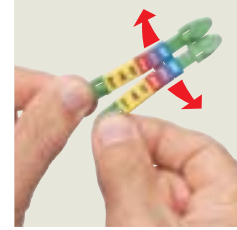
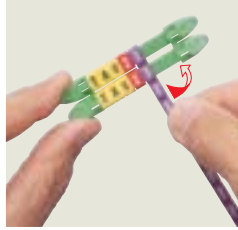
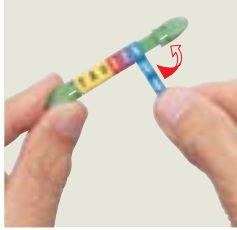
Cat.No 384 56 with marker and protective cover Cat.No 384 97



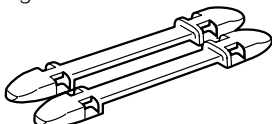
Opened marking system with marker-holders Cat.No 384 55



Clip-on marking system



Opened or closed marking system, with markers or labels

Pack	Cat.Nos		Marker-holders
	7 markers	14 markers	Fitted using Colring 2.4 and 3.5 mm cable ties
100	384 50	384 60	<ul style="list-style-type: none"> ● Black ● Red ● Yellow ● Green ● Blue 
100	384 52	384 62	
100	384 54	384 64	
100	384 55	384 65	
100	384 56	384 66	

Pack	Cat.Nos	Markers
		Price per marker
		Numbers: Black or white marking on colour background (international colour code) Supplied by packs of 40 x 20 markers
800	384 00	0 Black
800	384 01	1 Brown
800	384 02	2 Red
800	384 03	3 Orange
800	384 04	4 Yellow
800	384 05	5 Green
800	384 06	6 Blue
800	384 07	7 Purple
800	384 08	8 Grey
800	384 09	9 White

Pack	Cat.Nos	Markers
		Letters: Black on yellow background Supplied by packs of 30 x 20 markers
600	384 10	A
600	384 11	B
600	384 12	C
600	384 13	D
600	384 14	E
600	384 15	F
600	384 16	G
600	384 17	H
600	384 18	I
600	384 19	J
600	384 20	K
600	384 21	L
600	384 22	M
600	384 23	N
600	384 24	O
600	384 25	P
600	384 26	Q
600	384 27	R
600	384 28	S
600	384 29	T
600	384 30	U
600	384 31	V
600	384 32	W
600	384 33	X
600	384 34	Y
600	384 35	Z

Pack	Cat.Nos	Markers (continued)
		Conventional symbols: Black on a yellow background
600	384 40	/
600	384 41	•
600	384 42	+
600	384 43	-
600	384 44	~
600	384 45	=
600	384 46	±
600	384 99	Blank
1	384 96	Set of Duplix markers 100 pieces of each number from 0 to 9

Pack	Cat.Nos	Accessories
100	384 98	Label-holder for 7 markers Clips onto marker-holders Duplix or on end cap Cat.No 375 13 Holds and protects labels 9 mm wide printed using title printer Cat.No 385 85 on tape Cat.No 385 81 (p. 385)
100	384 97	UV protective cover Enables closed cable marking system Clips onto label-holders for 7 markers

On-site toolbox (p. 375)

labelling system



385 80



Tapes for hand-held printer



Heat-shrinkable sleeves
385 70/71/72/73

Pack	Cat.Nos	Portable labelling system
1	385 80	For making identification labels for patch panels, cables and wiring accessories Labels on adhesive tape Numerous print functions and settings, data memorisation and import possible Supplied complete in carrying case with hand-held printer power supply unit 200-240 V~ 50/60 Hz, 9 volts 2 tape cassettes, Cat.Nos 385 82/87 Operates with 6 LR6 batteries (not supplied) or rechargeable battery Cat.No 385 99 (not supplied) or power supply unit (supplied) Rechargeable battery pack
1	385 99	

		Tapes for hand-held printer	
1	White	Metal grey	385 81
1	385 82	385 84	12 mm
1	385 83	385 86	19 mm
Flexible polyamide for curved surface cables Indoor use. Length 3.5 m x width:			
1	White	Yellow	385 87
1	385 88	385 89	12 mm
		385 90	19 mm
Flexible vinyl for cords or faceplates Indoor or outdoor use. Length 5.5 m x width:			
1	White	Yellow	385 95
1	385 92	385 93	12 mm
1	Orange	385 93	12 mm
1	Red	385 91	19 mm

		Labels
1	385 96	Transparent polyester 9 mm width, 7 m length
1	385 74	Non adhesive 12 mm width, 5.5 mm length White polypropylene

		Heat-shrinkable sleeves				
Can be used with former printer Cat.No 385 85						
Length (m)	Width (mm)	Conductor Ø (mm)		Colour		
		Min.	Max.			
1	385 70	1.5	6	1.18	2.33	White
1	385 71	1.5	9	1.73	3.73	White
1	385 72	1.5	12	2.97	5.13	White
1	385 73	1.5	19	4.64	8.70	White

		Accessories for Cat.No 049 50
Can be used with former printer Cat.No 385 85		
5	049 53	Tape refill (black characters on white background) 9 mm width
5	049 54	12 mm width

labelling system

■ Technical characteristics

- Thermal transfer printing
- Integrated cutter
- 1 to 4 lines of print (width 19 mm)
- Standard electrical symbols or via 64 Kb card
- Barcode option, 2 formats
- Memorisation of 8 commonly used labels
- Copy incrementation function
- Automatic stop

■ Labelling methods



Lexic: per module or on faceplate per row

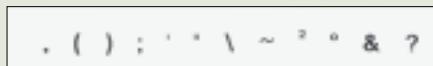
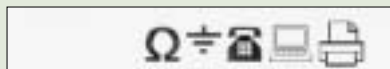


Terminal blocks: horizontal marking



Cables: rolled round horizontal

■ Symbols



■ Refills table of choice

Cat.Nos	Tapes	Indoor	Outdoor	Faceplates	Curved surface
385 81	Permanent polyester tape 9 mm white	●	●	●	-
385 82	Permanent polyester tape 12 mm white	●	●	●	-
385 83	Permanent polyester tape 19 mm white	●	●	●	-
385 84	Permanent polyester tape 12 mm metal grey	●	●	●	-
385 86	Permanent polyester tape 19 mm metal grey	●	●	●	-
385 87	Flexible polyamide tape 12 mm white	●	-	●	●
385 88	Flexible polyamide tape 19 mm white	●	-	●	●
385 89	Flexible polyamide tape 12 mm yellow	●	-	●	●
385 90	Flexible polyamide tape 19 mm yellow	●	-	●	●
385 70	Heat-shrinkable sleeve 6 mm white	●	●	-	-
385 71	Heat-shrinkable sleeve 9 mm white	●	●	-	-
385 72	Heat-shrinkable sleeve 12 mm white	●	●	-	-
385 73	Heat-shrinkable sleeve 19 mm white	●	●	-	-
385 74	Flexible polyamide non adhesive tape 12 mm white	●	●	●	-
385 91	Flexible vinyl tape 19 mm red	●	●	●	●
385 92	Flexible vinyl tape 12 mm orange	●	●	●	●
385 93	Flexible vinyl tape 12 mm green	●	●	●	●
385 94	Flexible vinyl tape 12 mm yellow	●	●	●	●
385 95	Flexible vinyl tape 12 mm white	●	●	●	●
385 96	Transparent polyester tape 9 mm	●	●	●	-

(1) To maintain an optimal printing quality it is recommended to remove the tapes after each use and to store it in a dry place