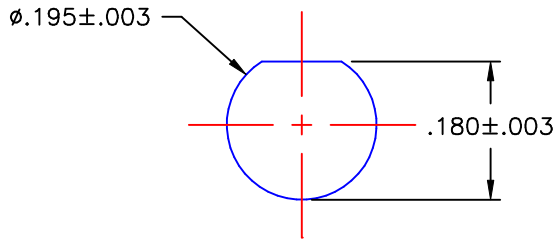
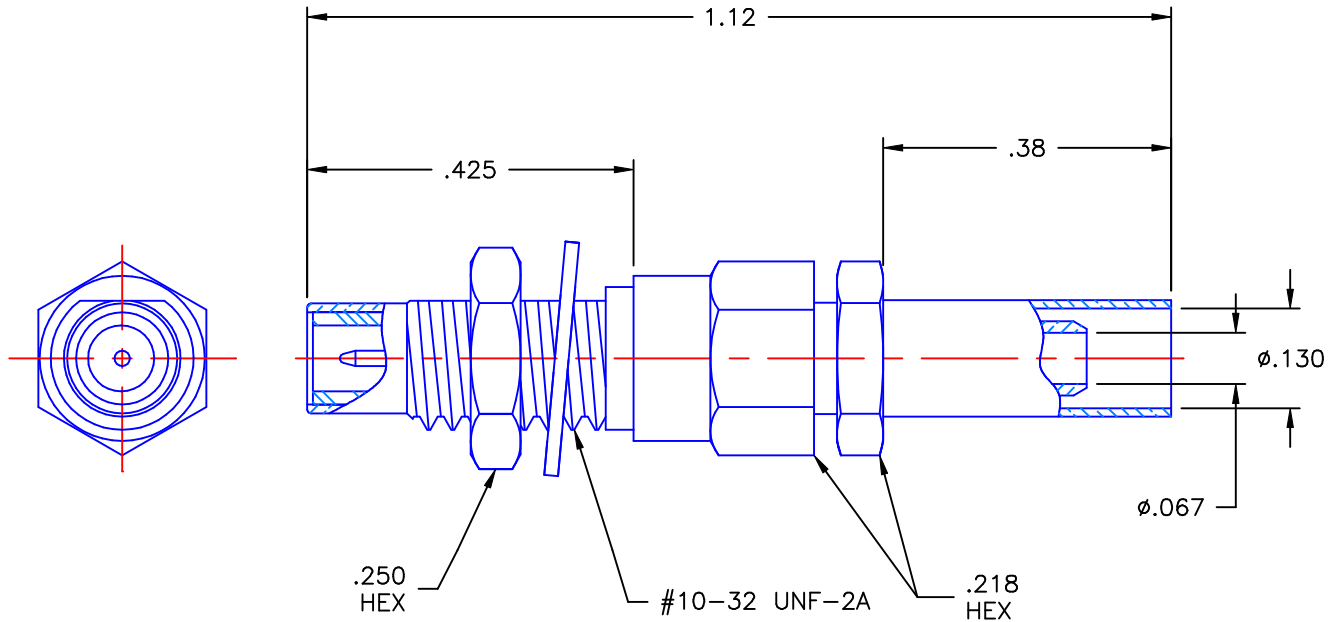


REVISIONS			
REV	DESCRIPTION	DATE	APPROVED
-	INITIAL RELEASE	03/05/99	D.N.



MOUNTING HOLE DIMENSIONS



**NOTES:**


**MATERIAL:**

1. LOCKWASHER = PHOSPHOR BRONZE, PER ASTM B139, COPPER ALLOY C53400, TEMPER H04.
2. INSULATORS = VIRGIN WHITE TEFLON, PER ASTM D1710, GRADE 1, TYPE I, CLASS "A".
3. CRIMP SLEEVE = SEAMLESS COPPER TUBING, PER ASTM B75, TYPE C12000, TEMPER LIGHT ANNEAL 050, EXCEPT YIELD STRENGTH.
4. ALL OTHER METAL PARTS = BRASS, PER ASTM B16, ALLOY C36000, TEMPER H02.

**FINISH:**

1. CONTACT = GOLD PLATE PER MIL-G-45204, TYPE II, CLASS 1, GRADE C, OVER .00010 TO .00020 STRESS FREE SULFAMATE NICKEL PER QQ-N-290.
2. ALL OTHER METAL PARTS = NICKEL PLATE PER QQ-N-290, CLASS 1, GRADE G, EXCEPT .0001 TO .0002 THICK OVER .00005 TO .0001 THICK COPPER PER MIL-C-14550.

Property of Radiall Incorporated  
This document cannot be reproduced or communicated to a third party without prior written permission of RADIALL Incorporated.

UNLESS OTHERWISE SPECIFIED DIMENSIONS ARE IN INCHES TOLERANCES ON		DWN: DATE	 <b>APPLIED ENGINEERING PRODUCTS</b> 104 John W. Murphy Dr. New Haven, CT 06513			
		D.N. 03/04/99				
DECIMAL	ANGLE	CHKD: DATE	<b>SMC STRAIGHT MALE          SOLDER/CRIMP          TO RD-316 FLEXIBLE</b>			
		G.L. 03/05/99				
	$\pm 2^\circ$	APVD: DATE	SIZE	FSCM NO.	DWG NO.	REV
		E.W. 03/05/99	A	19505	1003-7571-019	-
REFERENCE:		MATERIAL & FINISHES:	SCALE 4:1		THIRD ANGLE PROJECTION	SHEET 1 OF 1
ORIGINATOR: D.N. DATE: 03/04/99		SEE NOTES				

1003-7571-019

# Mouser Electronics

Authorized Distributor

Click to View Pricing, Inventory, Delivery & Lifecycle Information:

Radial:

[1003-7571-019](tel:1003-7571-019)