

DINO-LITE ACCESSORIES



DINO-LITE ACCESSORIES PROFESSIONAL STANDS

More information on: www.dino-lite.eu/professionalstands



RK10A

A sturdy and high-end professional stand solution. It is constructed of resilient stainless steel and light-weight aluminum for a very precise fine-focus adjustment and a quick release function.



MS36B

Square metal base with column and support providing several adaptable heights. It has a horizontal beam for additional flexibility. Also available: MS36BE - ESD safe version.



MS35B

Square metal base with column and support providing several adaptable heights. It is a stable vertical desktop stand to be used with all Dino-Lite microscopes. Also available: MS35BE - ESD safe version.



MS34B

For precision focus and stable viewing in a compact design. Due to the precision vertical movement of the holster, a steady view can be obtained, even at higher magnifications.



MS52B

Dino-Lite heavy duty jointed flex arm stand.

A sturdy and reliable stand solution is a must-have for your high precision Dino-Lite digital microscope. A broad range of stands, caps, microscope tables and other accessories is offered. From affordable basic stands to a square metal base column stand. Or from an advanced XY table to a USB powered backlight. All original Dino-Lite accessories are made at the same high quality design and construction level.



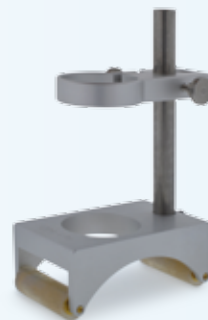
MS15X

High precision X/Y table



MS25X

X/Y inspection table



MS-W1

Special stand for cylinder surfaces
or to roll on flat surfaces.



MSAK810

Adjustable flex arm which
can be attached to the pole
of a MS35B/MS36B



RK-02

A heavy duty gooseneck stand

HIGHLIGHTED PRODUCT More information on: www.dino-lite.eu/rk-10a

RK10A

A sturdy and stable high-end stand solution. The Dino-Lite RK-10A is a sturdy and stable high-end stand solution that can be used with all the professional Dino-Lite models. It is constructed of resilient stainless steel and lightweight aluminum and offers a very precise fine-focus adjustment as well as a quick release function.

The quick release button allows for fast and convenient vertical movement and the fine-focus adjustment knob is especially useful at high magnification. This model also includes an adjustable safety stop to prevent the microscope from touching the specimen. Its adjustable horizontal arm has a 15cm range with 360-degree rotation and the additional arm (included) increases its effective range to observe larger objects. With these features, the RK-10A is the ideal accessory for precise orientation and positioning for maximum productivity and ease of use in a wide range of environments including industrial, scientific and laboratory settings. Available extensions for the RK-10A stand: RK-10-EX: additional horizontal arm - RK-10-FX: flexible arm extension – RK-10-VX: vertical arm extension.



Available extensions for the RK-10A stand:



RK-10-EX: additional horizontal arm



RK-10-FX: flexible arm extension



RK-10-VX: vertical arm extension

DINO-LITE ACCESSORIES BASIC STANDS

More information on: www.dino-lite.eu/basicstands



MS33W

Round metal base with flexible arm and holder for the Dino-Lite.



MS23B

The MS23B is a desktop clamp with flexible gooseneck that can be clamped to a desktop.



MS12C

The MS12C consists of a base unit with two insert adapters.



MS09B

The MS09B is an ultra-portable mini stand.



MS16C

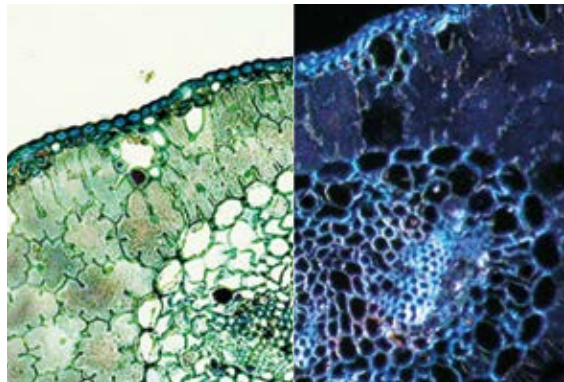
Specimen holder stand with different clips to hold specimens.

HIGHLIGHTED PRODUCT More information on: www.dino-lite.eu/bl-cdw

BL-CDW, DARK FIELD / BRIGHT FIELD BACKLIGHT

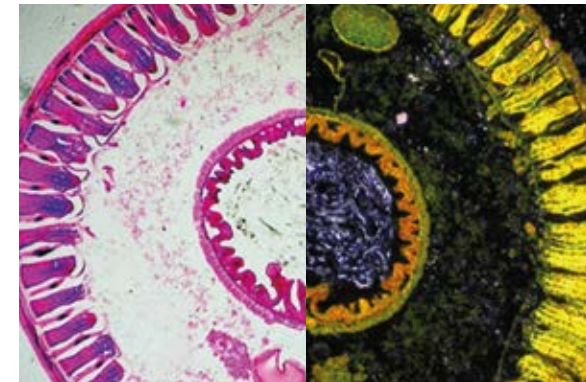
The Dino-Lite backlight stage BL-CDW allows two different types of lighting: brightfield and darkfield. In the brightfield mode, the light is transmitted from below the sample that shows up vividly showing the form and structure of the specimen on a bright background.

With darkfield illumination, the transmitted light will not reach the microscope and will therefore not be part of the image. The image will show bright objects on an almost black background. This type of light is not only suitable for prepared specimen but also for live specimen such as flagellum, the pseudopod movement, spirochete and more. Both types of illumination allow for high contrast, clear images and adds a whole new dimension to the Dino-Lite digital handheld microscopes with magnifications over 100x.



Licht field

Dark field



Licht field

Dark field

DINO-LITE ACCESSORIES LIGHT & CONTROL

More information on: www.dino-lite.eu/lightcontrol



BL-CDW

Brightfield/Darkfield Backlight Illuminator. The Dino-Lite backlight stage BL-CDW allows two different types of lighting: brightfield and darkfield.



SW-F1

Foot pedal accessory allowing you to take a picture with your foot. No additional software is required, simply plug in the device into your USB port and it is ready to use.



SL-ZW1

Polarized USB powered gooseneck light with adjustable polarization.



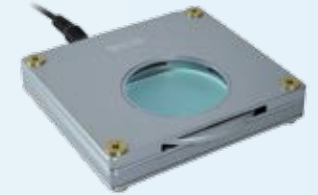
N3C-R

The N3C-R is a passive ring light solution that helps to reveal more details by generating shadow-less illumination



KM01

The KM-01 can be used to control the Dino-Lite focus wheel without touching the device. This is especially useful when the Dino-Lite needs to be isolated during use.



BL-ZW1

USB or DC powered backlight with a built in, freely rotatable polarizer.