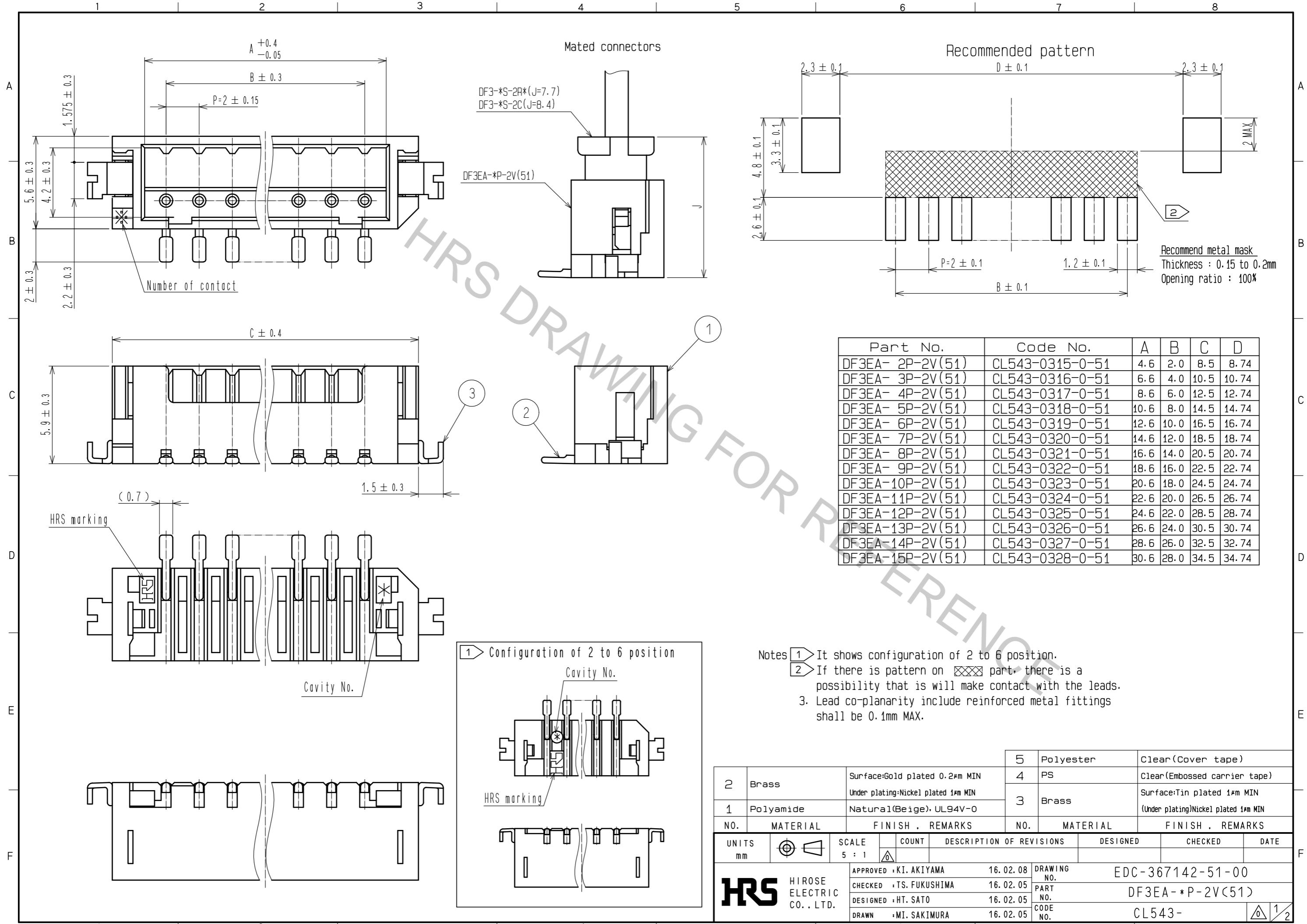


Apr.1.2017 Copyright 2017 HIROSE ELECTRIC CO., LTD. All Rights Reserved.

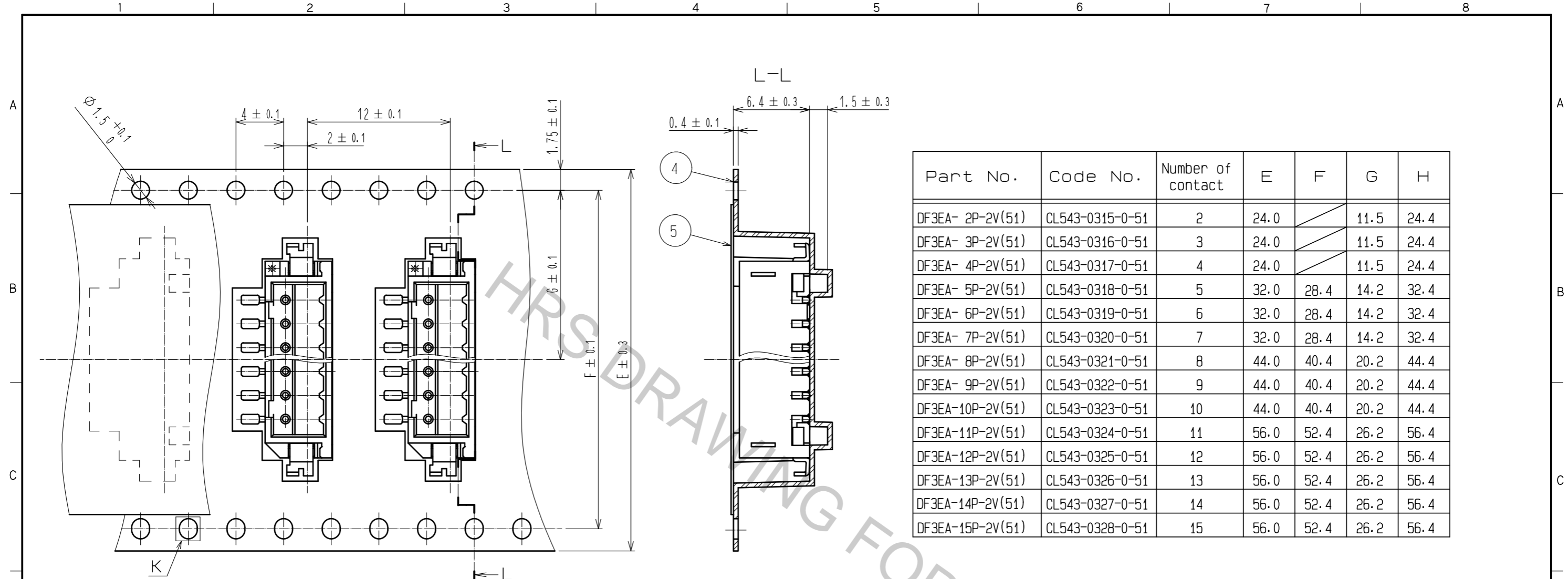


| Part No. | Code No. | A | B | C | D |
|------------------|-----------------|------|------|------|-------|
| DF3EA- 2P-2V(51) | CL543-0315-0-51 | 4.6 | 2.0 | 8.5 | 8.74 |
| DF3EA- 3P-2V(51) | CL543-0316-0-51 | 6.6 | 4.0 | 10.5 | 10.74 |
| DF3EA- 4P-2V(51) | CL543-0317-0-51 | 8.6 | 6.0 | 12.5 | 12.74 |
| DF3EA- 5P-2V(51) | CL543-0318-0-51 | 10.6 | 8.0 | 14.5 | 14.74 |
| DF3EA- 6P-2V(51) | CL543-0319-0-51 | 12.6 | 10.0 | 16.5 | 16.74 |
| DF3EA- 7P-2V(51) | CL543-0320-0-51 | 14.6 | 12.0 | 18.5 | 18.74 |
| DF3EA- 8P-2V(51) | CL543-0321-0-51 | 16.6 | 14.0 | 20.5 | 20.74 |
| DF3EA- 9P-2V(51) | CL543-0322-0-51 | 18.6 | 16.0 | 22.5 | 22.74 |
| DF3EA-10P-2V(51) | CL543-0323-0-51 | 20.6 | 18.0 | 24.5 | 24.74 |
| DF3EA-11P-2V(51) | CL543-0324-0-51 | 22.6 | 20.0 | 26.5 | 26.74 |
| DF3EA-12P-2V(51) | CL543-0325-0-51 | 24.6 | 22.0 | 28.5 | 28.74 |
| DF3EA-13P-2V(51) | CL543-0326-0-51 | 26.6 | 24.0 | 30.5 | 30.74 |
| DF3EA-14P-2V(51) | CL543-0327-0-51 | 28.6 | 26.0 | 32.5 | 32.74 |
| DF3EA-15P-2V(51) | CL543-0328-0-51 | 30.6 | 28.0 | 34.5 | 34.74 |

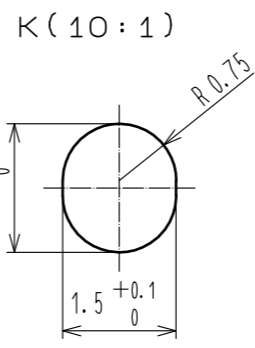
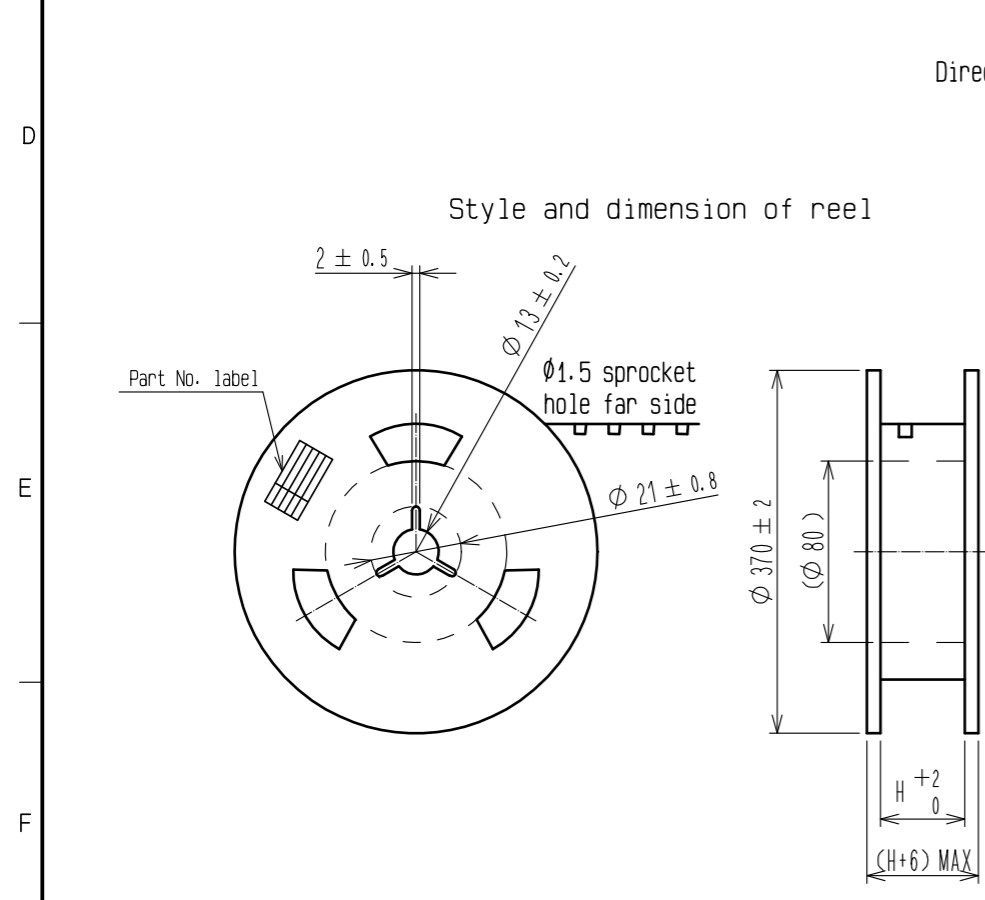
| NO. | MATERIAL | FINISH | REMARKS | NO. | MATERIAL | FINISH | REMARKS |
|-----|-----------|--|---------|-----|-----------|--------|--|
| 2 | Brass | Surface:Gold plated 0.2µm MIN Under plating:Nickel plated 1µm MIN | | 5 | Polyester | | Clear(Cover tape) |
| 1 | Polyamide | Natural(Beige), UL94V-0 | | 4 | PS | | Clear(Embossed carrier tape) |
| | | | | 3 | Brass | | Surface:Tin plated 1µm MIN (Under plating)Nickel plated 1µm MIN |

| UNITS | SCALE | COUNT | DESCRIPTION OF REVISIONS | DESIGNED | CHECKED | DATE |
|-------|-------|-------|--------------------------|----------|---------|------|
| mm | 5 : 1 | △ | | | | |

| | | | |
|-------------------------|----------|-------------|------------------|
| APPROVED : KI. AKIYAMA | 16.02.08 | DRAWING NO. | EDC-367142-51-00 |
| CHECKED : TS. FUKUSHIMA | 16.02.05 | PART NO. | DF3EA-*P-2V(51) |
| DESIGNED : HT. SATO | 16.02.05 | CODE NO. | CL543- |
| DRAWN : MI. SAKIMURA | 16.02.05 | | |



| Part No. | Code No. | Number of contact | E | F | G | H |
|------------------|-----------------|-------------------|------|------|------|------|
| DF3EA- 2P-2V(51) | CL543-0315-0-51 | 2 | 24.0 | | 11.5 | 24.4 |
| DF3EA- 3P-2V(51) | CL543-0316-0-51 | 3 | 24.0 | | 11.5 | 24.4 |
| DF3EA- 4P-2V(51) | CL543-0317-0-51 | 4 | 24.0 | | 11.5 | 24.4 |
| DF3EA- 5P-2V(51) | CL543-0318-0-51 | 5 | 32.0 | 28.4 | 14.2 | 32.4 |
| DF3EA- 6P-2V(51) | CL543-0319-0-51 | 6 | 32.0 | 28.4 | 14.2 | 32.4 |
| DF3EA- 7P-2V(51) | CL543-0320-0-51 | 7 | 32.0 | 28.4 | 14.2 | 32.4 |
| DF3EA- 8P-2V(51) | CL543-0321-0-51 | 8 | 44.0 | 40.4 | 20.2 | 44.4 |
| DF3EA- 9P-2V(51) | CL543-0322-0-51 | 9 | 44.0 | 40.4 | 20.2 | 44.4 |
| DF3EA-10P-2V(51) | CL543-0323-0-51 | 10 | 44.0 | 40.4 | 20.2 | 44.4 |
| DF3EA-11P-2V(51) | CL543-0324-0-51 | 11 | 56.0 | 52.4 | 26.2 | 56.4 |
| DF3EA-12P-2V(51) | CL543-0325-0-51 | 12 | 56.0 | 52.4 | 26.2 | 56.4 |
| DF3EA-13P-2V(51) | CL543-0326-0-51 | 13 | 56.0 | 52.4 | 26.2 | 56.4 |
| DF3EA-14P-2V(51) | CL543-0327-0-51 | 14 | 56.0 | 52.4 | 26.2 | 56.4 |
| DF3EA-15P-2V(51) | CL543-0328-0-51 | 15 | 56.0 | 52.4 | 26.2 | 56.4 |



Supplier
Quantity
Part No.
Code No.
Date of manufactured

Detail of Part No. label

| | |
|------|-----------------|
| 生産月日 | 年 月 日 |
| ☒番 | CL543-****-*51 |
| 品名 | DF3EA-*P-2V(51) |
| 納入数量 | 1000K□ |
| 納入者 | ヒロセ電機(株) |

- Notes
- 1 reel 1000 connectors.
 - At the beginning of the reel, 30 boxes shall be empty.
At The end of the reel, 20 boxes shall be empty.
 - When the tape width is 32, 44 and 56 mm, sprocket holes shall be set on both sides of reel as shown on this drawing.

| | | |
|------------|-------------|------------------|
| HRS | DRAWING NO. | EDC-367142-51-00 |
| | PART NO. | DF3EA-*P-2V(51) |
| | CODE NO. | CL543- |