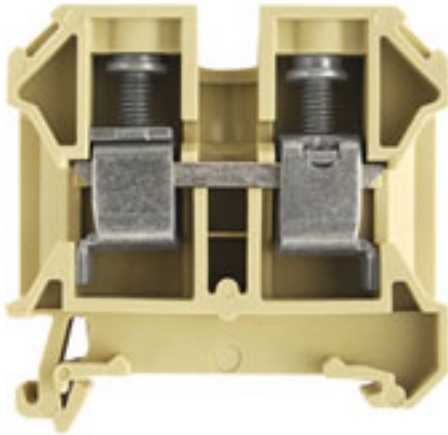


**SAK terminal feed-through terminal  
SAK 16/35 PA**

**Weidmüller Interface GmbH & Co. KG**  
 Klingenbergstraße 16  
 D-32758 Detmold  
 Germany  
 Fon: +49 5231 14-0  
 Fax: +49 5231 14-2083  
 www.weidmueller.com



The Weidmüller SAK feed-through terminals satisfy the requirements of IEC 60947-1 and are available with rated cross-sections from 0.08 mm<sup>2</sup> to 240 mm<sup>2</sup>.

**General ordering data**

Order No.	<a href="#">0380660000</a>
Part designation	SAK 16/35 PA
Version	SAK terminal feed-through terminal, Feed-through terminal, Rated cross-section: 16 mm <sup>2</sup> , Screw connection, PA 66, beige
GTIN (EAN)	4008190118204
Qty.	50 pc(s).

## SAK terminal feed-through terminal SAK 16/35 PA

**Weidmüller Interface GmbH & Co. KG**  
 Klingenbergstraße 16  
 D-32758 Detmold  
 Germany  
 Fon: +49 5231 14-0  
 Fax: +49 5231 14-2083  
 www.weidmueller.com

## Technical data

### CSA ratings data

Certificate no.	154685-1501714	Voltage size C	600 V
Current size C (CSA)	87 A	Conductor cross-section, max.	4 AWG
Conductor cross-section, min.	14 AWG		

### UL ratings data

Certificate no.	E60693VOL1SEC14	Voltage size C	600 V
Current size C (UR)	80 A	Conductor size Factory wiring, max	4 AWG
Conductor size Factory wiring, min	12 AWG	Conductor size Field wiring, max	4 AWG

### IECEX/ATEX rating data

Certificate no.	KEMA97ATEX1798U	ATEX certificate	KEMA97ATEX1798U_d.pdf
ATEX certificate	KEMA97ATEX1798U_e.pdf	Certificate no.	IECEXKEM06.0014U
max. voltage	690 V	Current (ATEX)	66 A
Conductor cross-section, max.	16 mm <sup>2</sup>	max. voltage	690 V
Current (IECEX)	66 A	Conductor cross-section, max.	16 mm <sup>2</sup>
Voltage when using cross-connections	CrossConnectionGuide.pdf	Operating temperature range	
Marking EN 60079-7	Ex e II		

### Additional technical data

Colour of insulating material	beige	Connection direction	on side
End cover plate required	Yes	Explosion-tested version	No
Flammability class UL 94	V-2	Insulating material	PA 66
Levels cross-connected internally	No	No. of clamping points per level	2
Number of identical terminals	1	Number of levels	1
Open sides	right	Operating temperature range, max.	100 °C
Operating temperature range, min.	-50 °C	Product family	SAK terminal feed-through terminal
Type of connection	Screw connection	Type of mounting	Snap-on

### Conductors for clamping (additional connection)

Rated current	76 A	Type of connection	Screw connection
Clamping screw	M 4	Blade size	1.0 x 5.5 mm
Tightening torque, max.	2.4 Nm	Tightening torque, min.	2 Nm
Conductor cross-section, flexible plus plastic collar DIN 46228/1, further connection, min.	4 mm <sup>2</sup>	Conductor cross-section, flexible plus plastic collar DIN 46228/1, further connection, max.	16 mm <sup>2</sup>
Conductor connection cross-section AWG, min.	AWG 12	Conductor connection cross-section AWG, max.	AWG 6

**SAK terminal feed-through terminal  
SAK 16/35 PA**

**Weidmüller Interface GmbH & Co. KG**  
Klingenbergstraße 16  
D-32758 Detmold  
Germany  
Fon: +49 5231 14-0  
Fax: +49 5231 14-2083  
www.weidmueller.com

**Technical data**

**Conductors for clamping (rated connection)**

Clamping range, min.	2.5 mm <sup>2</sup>	Clamping range, max.	16 mm <sup>2</sup>
Type of connection	Screw connection	Connection direction	on side
No. of connections	2	Stripping length	15 mm
Clamping screw	M 4	Blade size	1.0 x 5.5 mm
Tightening torque, min.	2 Nm	Tightening torque, max.	2.4 Nm
Torque setting with DMS electric screwdriver 4		Gauge to IEC 60947-1	B6
Conductor cross-section, solid, min.	2.5 mm <sup>2</sup>	Conductor cross-section, solid, max.	16 mm <sup>2</sup>
Stranded, min.	4 mm <sup>2</sup>	Stranded, max.	16 mm <sup>2</sup>
Conductor cross-section, flexible, max.	16 mm <sup>2</sup>	Conductor cross-section, flexible plus plastic collar DIN 46228/1, rated connection, min.	4 mm <sup>2</sup>
Conductor cross-section, flexible plus plastic collar DIN 46228/1, rated connection, max.	16 mm <sup>2</sup>	Conductor cross-section, flexible AEH plus plastic collar DIN 46228/4, rated connection, min.	4 mm <sup>2</sup>
Conductor cross-section, flexible AEH plus plastic collar DIN 46228/4, rated connection, max.	16 mm <sup>2</sup>	Twin wire-end ferrule, min.	1.5 mm <sup>2</sup>
Twin wire-end ferrule, max.	10 mm <sup>2</sup>	Conductor connection cross-section AWG, min.	AWG 12
Conductor connection cross-section AWG, max.	AWG 6		

**Rating data**

Rated cross-section	16 mm <sup>2</sup>	Rated voltage	1,000 V
Rated impulse withstand voltage	8 kV	Rated current	76 A
Standards	IEC 60947-7-1	Current with max. conductor	76 A
Pollution severity	3		

**Approvals**

Approvals institutes	BURVER; CSA; GERMLLOYD; GOSTME25; IECEXKEM; KEMAATEX; KEMAKEUR; LLOYDSREG; MARITREG; UR; CE
----------------------	---

**Classifications**

ETIM 2.0	EC000897	ETIM 3.0	EC000897
eClass 5.1	27-14-11-20	eClass 6.0	27-14-11-20

**Product notes**

Note, ordering data	If QIs are aligned side by side, then a TW/AP must be used.
---------------------	---