

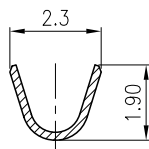
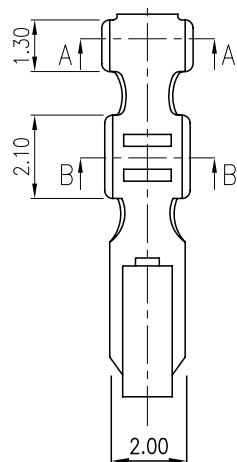
1

2

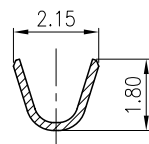
3

4

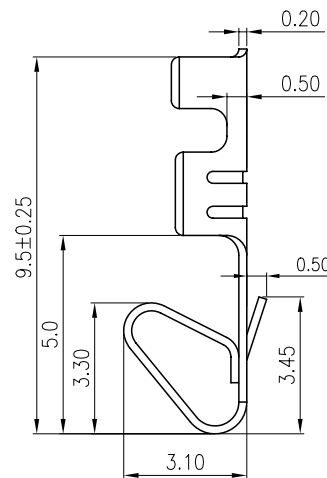
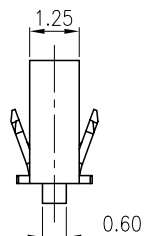
5



A-A



B-B



## TECHNICAL CHARACTERISTICS

MATERIAL  
 CONTACT MATERIAL: COPPER ALLOY  
 CONTACT TYPE: STAMPED  
 CONTACT PLATING: TIN  
 QUALITY CLASS: 25 MATING CYCLES  
 PITCH: 2.54MM

ENVIRONMENTAL  
 OPERATING TEMPERATURE: -40 UP TO 125°C  
 COMPLIANCE: LEAD FREE AND ROHS

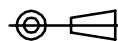
ELECTRICAL  
 CURRENT RATING: 3A  
 WORKING VOLTAGE: 250V AC  
 CONTACT RESISTANCE: 20 mOHM MAX

WIRE DIMENSION  
 AWG: AWG 22 - 28

PACKAGING  
 BULK/LOOSE DELIVERY IN A BAG  
 EACH CONTACT SEPARATED FROM EACH OTHER  
 NOT ON A REEL  
 100PCS/PER BAG. MULTIPLE OF 100PCS ONLY  
 1PCS OF 61900113722DEC=1 CRIMP CONTACT  
 SO 1 BAG MEANS 100 PCS OF 61900113722DEC

RoHS Compliant

PROJECTION:



GENERAL TOLERANCE

.X = +/- 0.2

.XX = +/- 0.15



APPROVAL: RJ

UNIT: MM

DESCRIPTION: 2.54MM FEMALE CRIMP CONTACT

SIZE

SCALE:

WERI PART NO: 619 001 137 22 DEC

A4

SHEET: 1/1

DRAW: PEARL

G			
F			
E			
D			
C			
B			
A	11-MAY-10	PDF	JP
REV	DATE	FILE	BY