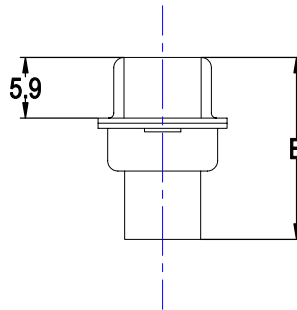
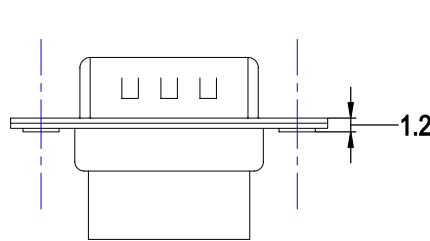
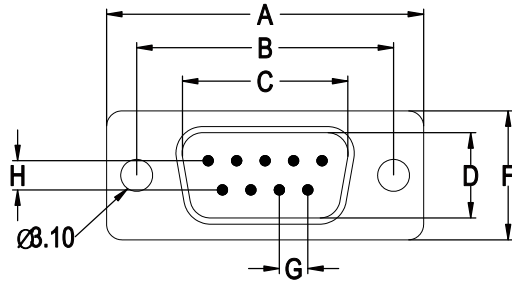


DC - 9 M C N

D-SUB
Crimp
9,15,25,37,50

Nickel or Tin or Gold Plated
Color(Black,Blue,White or Others)
Male



ELECTRICAL CHARACTERISTICS:

CONTACT CURRENT RATING:1AMPERES.

DIELECTRIC WITHSTANDING VOLTAGE:AC 500V R.M.S

INSULATION RESISTANCE:500 MEGOHMS MINIMUM

AT DC 500V.

CONTACT RESISTANCE:30 MILLIOHMS MAXIMUM.

OPERATING TEMPERATURE:-40°C TO +70°C.

MATERIALS:

CONTACTS:BRASS.

INSULATOR:P.B.T.UL 94V-0 RATED.

SHELL:COLD ROLLED STEEL.

FINISHES:

CONTACTS:GOLD FLASH .

SHELL: NICKEL PLATED .

PLASTIC: BLACK .

REQUESTED:

Cd<5PPM(mg/kg) Test standard: EN1122

Pb<50PPM(mg/kg) Test standard: EPA3050B

Others Test standard: EN71 Part 3

POSITION	A±0.3	B±0.2	C±0.2	D±0.2	E±0.2	F±0.2	G±0.2	H±0.1
DC-9Pin	30.85	25.00	16.92	8.30	17.50	12.55	2.77	2.84
DC-15Pin	39.25	33.35	25.25	8.30	17.50	12.55	2.77	2.84
DC-19Pin	44.80	38.86	30.60	8.30	17.50	12.55	2.77	2.84
DC-23Pin	50.30	44.30	35.90	8.30	17.50	12.55	2.77	2.84
DC-25Pin	53.10	47.04	38.96	8.30	17.50	12.55	2.77	2.84
DC-37Pin	69.40	63.50	55.42	8.30	17.50	12.55	2.77	2.84
DC-50Pin	67.08	61.05	53.81	11.07	18.00	15.37	2.77	2.84

**TOLERANCES
OTHERWISE STATED**
X. ±0.3
X.X ±0.2
X.XX ±0.1
X.XXX ±0.05
ANGULAR ±2°

REVISIONS

REV	DESCRIPTION	DATE

CUSTOMER P/N:

CH P/N.:

TITLE: DC 9pin MALE CONNECTOR

DRAW BY: REX

UNIT: mm

CHECKED:

SCALE:

DWG NO.:CH-ENB-001-18

REV: A/2

DATE: 2002.04.17