



Thermal Fuse Series

KLS5-KSD301 Thermal Fuse Series

SPECIFICATION:

Electrical Rating:

10A 250V AC (Resistive Load)

15A 125V AC (Resistive Load)

Operating Temp:50~175°C(UL.CUL 205°C)

Differential:10~30K(15K Standard)

Temp Tolerance:Operating Temp $\pm 3K \pm 5K$

Heat Durability:220°C Max.(PPS)

Contact Resistance: 50m Ω Max.

Insulation Resistance: 100M Ω Min.at DC500V

Dielectric Strength:AC 1000V for One Minute.

Operating Life:100000 Cycles(10A 250V)

6000 Cycles(15A 125V AC)



Contact Type :

A = Contact Opens When Temperature Rises to Set Point (Normally Closed)



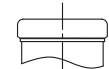
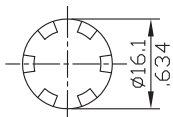
B = Contact Closes When Temperature Rises to Set Point (Normally Open)



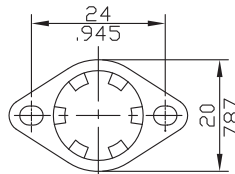
Bracket Type:

● FIXED BRACKET

* STAINLESS STEEL CAP : D,DL,V,T TYPE



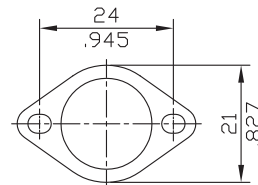
C TYPE



B TYPE

● LOOSE BRACKET

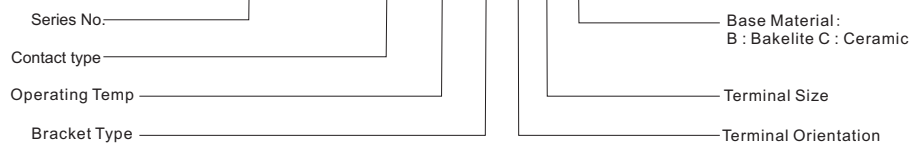
* STAINLESS STEEL CAP : U TYPE



O TYPE

ORDER INFORMATION

Product NO.: **KLS5-KSD301-A-110 C D 1 B**

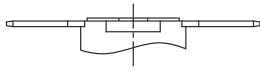




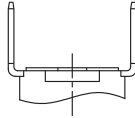
Thermal Fuse Series

KLS5-KSD301 Thermal Fuse Series

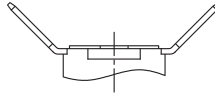
Terminal Orientation:



F TYPE
(0°)

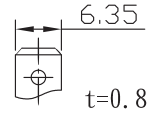


R TYPE
(90°)



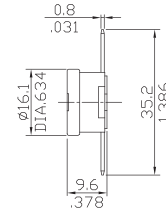
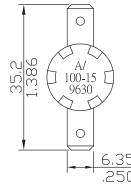
T TYPE
(45°)

Terminal Size:

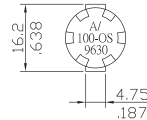


TYPE 1

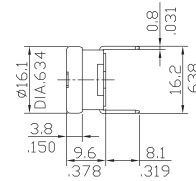
KSD301A-CF1



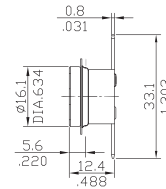
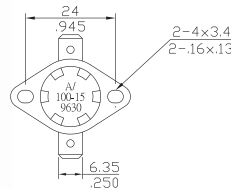
KSD301A-CR1



Reset below -35°C

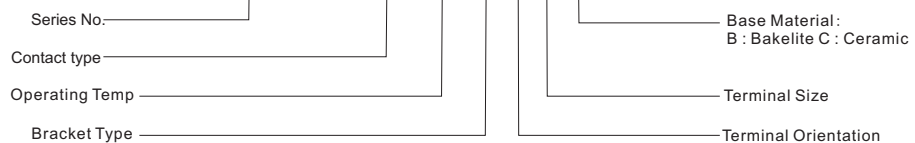


KSD301A-BF1



ORDER INFORMATION

Product NO.: **KLS5-KSD301-A-110 C D 1 B**



Thermal Fuse Series

KLS5-KSD301 Thermal Fuse Series

Action and Reset temperature

Action temperature	Reset temperature	Action temperature	Reset temperature
45± 3 °C	30± 5 °C	130± 3 °C	115± 5 °C
50± 3 °C	35± 5 °C	135± 3 °C	120± 5 °C
55± 3 °C	40± 5 °C	140± 3 °C	125± 5 °C
60± 3 °C	45± 5 °C	145± 3 °C	130± 5 °C
65± 3 °C	50± 5 °C	150± 3 °C	135± 5 °C
70± 3 °C	55± 5 °C	155± 3 °C	140± 5 °C
75± 3 °C	60± 5 °C	160± 3 °C	145± 5 °C
80± 3 °C	65± 5 °C	165± 4 °C	145± 5 °C
85± 3 °C	70± 5 °C	170± 4 °C	150± 5 °C
90± 3 °C	75± 5 °C	175± 4 °C	155± 5 °C
95± 3 °C	80± 5 °C	180± 4 °C	160± 5 °C
100± 3 °C	85± 5 °C	185± 4 °C	165± 5 °C
105± 3 °C	90± 5 °C	190± 5 °C	170± 5 °C
110± 3 °C	95± 5 °C	195± 5 °C	175± 5 °C
115± 3 °C	100± 5 °C	200± 5 °C	180± 5 °C
120± 3 °C	105± 5 °C	205± 5 °C	185± 5 °C
125± 3 °C	110± 5 °C	210± 5 °C	190± 5 °C

The specification can also be manufactured as request.

Test Method:

Sample is connected to the fixture of the equipment, and placed into the test equipment (Hot current of air in the space of test should be equipped with a stirrer and temperature is controllable). A detect current about 10mA (no more than 100mA) is passed through the sample and a thermometer is placed junction to the sample to monitor the opening temperature. The temperature of the test equipment is raised at the rate of 0.5~1 °C per minute until the sample functioned.

ORDER INFORMATION

Product NO.: KLS5-KSD301-A-110 C D 1 B

