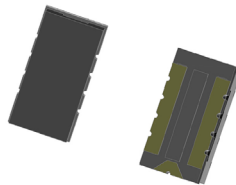


# SCF9550

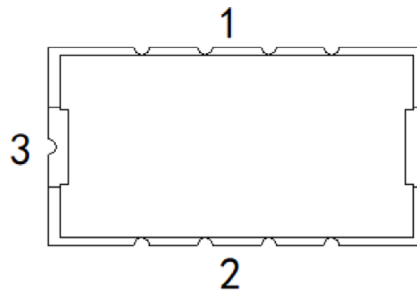
## 9.5 mm x 5.0 mm Surface mount self-control fuse



### Product features

- Surface mount, 3 terminal fuse
- Provides overcurrent and overcharging protection
- Integrated thermal element provides triggerable operation
- Ideal for battery powered electronics
- A unique fusible device provides fast acting performance
- Moisture sensitivity level (MSL): 1

### Equivalent circuit diagram



### Applications

- Notebook and laptop computing
- Handheld electric power tools
- Battery powered household appliances

### Agency information

cURus recognition file number:  
E19180, Guide JDYX2 and JDYX8

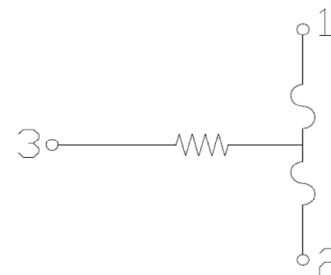
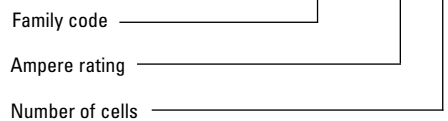


### Environmental compliance



### Ordering part number

**SCF9550- 30 -01**



## Electrical characteristics

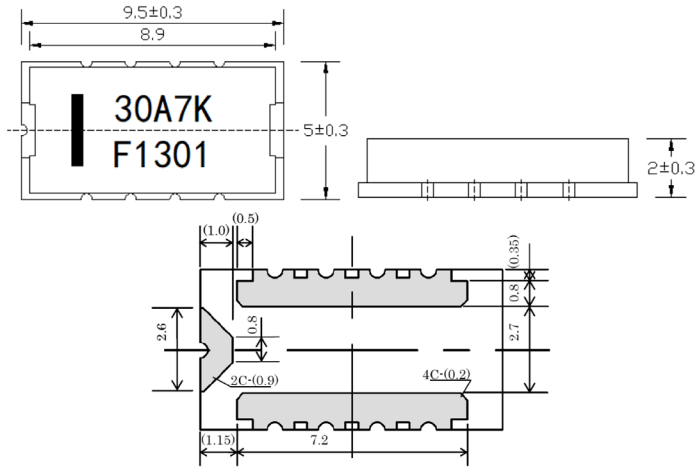
Condition of test	Opening time
100% of current rating	1 hour minimum
200% of current rating	60 seconds maximum
Operating voltage	60 seconds maximum

## Product specifications

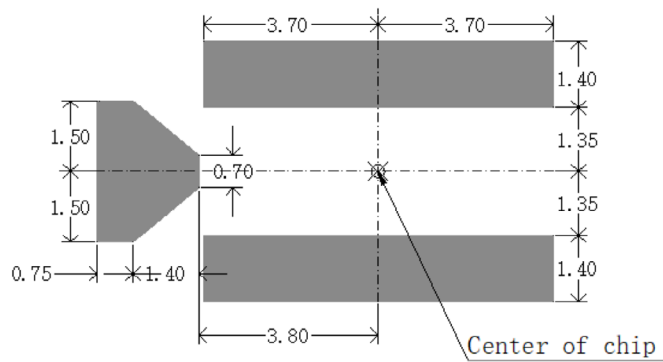
Part number	Current rating (A)	Voltage rating <sup>1</sup> (Vdc)	Heater DCR (Ω)	Operating voltage (V)	Breaking capacity (A)	Fuse DCR (mΩ)	Applicable cells in series	Part Marking	Agency approval cURus
SCF9550-30-01	30	62	0.8 - 1.2	4.0 - 6.6	80	1.0 - 2.5	1	30A1K	√
SCF9550-30-02	30	62	1.1 - 2.3	5.6 - 9.0	80	1.0 - 2.5	2	30A2K	√
SCF9550-30-03	30	62	3.2 - 5.2	8.4 - 13.2	80	1.0 - 2.5	3	30A3K	√
SCF9550-30-05	30	62	4.8 - 8.0	10.5 - 23.5	80	1.0 - 2.5	4-5	30A4K	√
SCF9550-30-07	30	62	18.8 - 31.2	20.2 - 31.5	80	1.0 - 2.5	6-7	30A7K	√
SCF9550-30-08	30	80	24.0 - 52.0	26.4 - 36.0	80	1.0 - 2.5	8	30A9K2	
SCF9550-30-10	30	80	40.0 - 60.0	28.0 - 47.0	80	1.0 - 2.5	10	30A10K	√
SCF9550-30-12	30	80	35.0 - 70.0	33.6 - 54.0	80	1.0 - 2.5	12	30A10K2	
SCF9550-30-13	30	80	65.0 - 100.0	36.2 - 58.5	80	1.0 - 2.5	13	30A10K4	
SCF9550-30-14	30	80	40.0 - 60.0	28.0 - 62.0	80	1.0 - 2.5	10-14	30A14K	√
SCF9550-30-17	30	80	59.0 - 120.0	42.0 - 74.8	80	1.0 - 2.5	15-17	30A14K3	
SCF9550-30-08L	30	80	10.0 - 20.0	20.0 - 30.0	80	1.0 - 2.5	8 LFP	30A9K2P	
SCF9550-30-14L	30	80	36.0 - 60.0	35.0 - 51.8	80	1.0 - 2.5	14 LFP	30A14KP	
SCF9550-30-16L	30	80	42.0 - 70.0	36.0 - 62.0	80	1.0 - 2.5	16 LFP	30A14K3P	
SCF9550-30-17L	30	80	54.0 - 90.0	42.5 - 62.9	80	1.0 - 2.5	17 LFP	30A14K4P	
SCF9550-30-20L	30	80	60.0 - 100.0	50.0 - 74.0	80	1.0 - 2.5	20 LFP	30A14K7P	
SCF9550-45-03	45	80	1.9 - 2.9	9.8 - 13.5	120	0.5 - 1.5	3	45A3K	√
SCF9550-45-04	45	80	3.4 - 5.1	13.0 - 18.4	120	0.5 - 1.5	4	45A4K	√
SCF9550-45-05	45	80	5.6 - 8.4	16.7 - 23.5	120	0.5 - 1.5	5	45A5K	√
SCF9550-45-06	45	80	7.4 - 11.8	19.8 - 27.0	120	0.5 - 1.5	6	45A5K2	
SCF9550-45-07	45	80	10.0 - 15.0	22.3 - 31.5	120	0.5 - 1.5	6-7	45A7K	√
SCF9550-45-08	45	80	14.4 - 21.5	26.7 - 37.6	120	0.5 - 1.5	8	45A8K	√
SCF9550-45-10	45	80	22.0 - 33.0	33.0 - 47.0	120	0.5 - 1.5	9-10	45A10K	√
SCF9550-45-14	45	80	38.5 - 75.0	47.2 - 62.0	120	0.7 - 1.4	13-14	45A14K	√
SCF9550-45-16	45	80	55.0 - 95.0	56.0 - 70.4	120	0.7 - 1.4	16	45A14K6	
SCF9550-45-17	45	80	64.0 - 104.0	59.5 - 76.0	120	0.5 - 1.5	17	45A14K4	
SCF9550-45-20	45	80	72.0 - 145.0	70.0 - 90.0	120	0.5 - 1.5	20	45A14K7	
SCF9550-45-14L	45	80	27.0 - 41.0	36.4 - 51.8	120	0.5 - 1.5	14 LFP	45A14KP	
SCF9550-45-15L	45	80	29.2 - 48.4	40.0 - 54.0	120	0.5 - 1.5	15 LFP	45A14K2P	
SCF9550-45-16L	45	80	35.6 - 52.4	41.6 - 59.2	120	0.5 - 1.5	16 LFP	45A14K3P	
SCF9550-45-17L	45	80	39.6 - 59.2	44.2 - 62.9	120	0.5 - 1.5	17 LFP	45A14K4P	
SCF9550-45-20L	45	80	55.0 - 75.5	50.0 - 74.0	120	0.5 - 1.5	20 LFP	45A14K7P	
SCF9550-45-24L	45	80	85.0 - 156.5	72.0 - 92.0	120	0.5 - 1.5	24 LFP	45A14K11P	

1. Rated voltage is the maximum voltage that the fuse can block, not the action voltage of the heater assembly

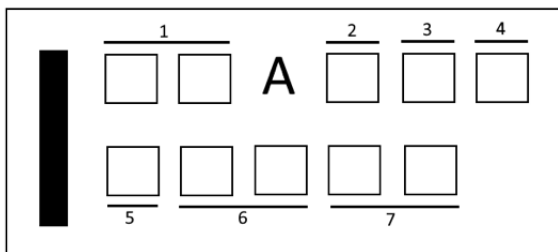
**Dimensions- mm**  
 Drawing not to scale



**Recommended pad layout**



**Part marking**



1. Rated current: 30A, 45A
2. Number related to series number
3. Length width size code: K: 9.5 x 5.0 mm
4. Extension for (2)
5. Year: D: 2018; E: 2019.....
6. Week of year: 01, 02.....52
7. Running number: 01, 02.....

### General specifications

Operating temperature: -20 °C to +60 °C

Storage temperature: -10 °C to +40 °C < 90% RH

Storage duration: 1 year

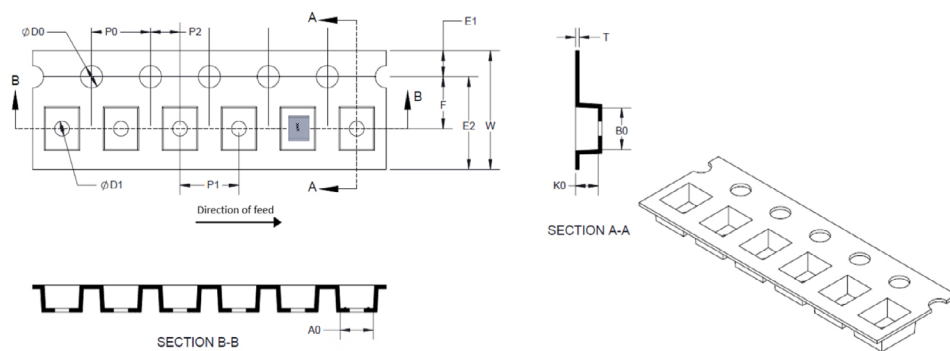
High temperature: +105 °C @ 1000 hours

Humidity: +85 °C @ 85% RH @ 500 hours

Low temperature: -40 °C @ 500 hours

### Packaging information- mm

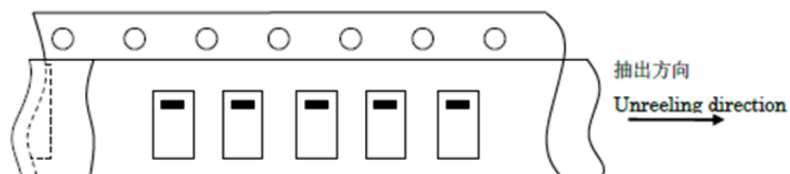
Supplied in tape and reel packaging, 3000 parts per 13" diameter reel. (EIA-481 compliant)



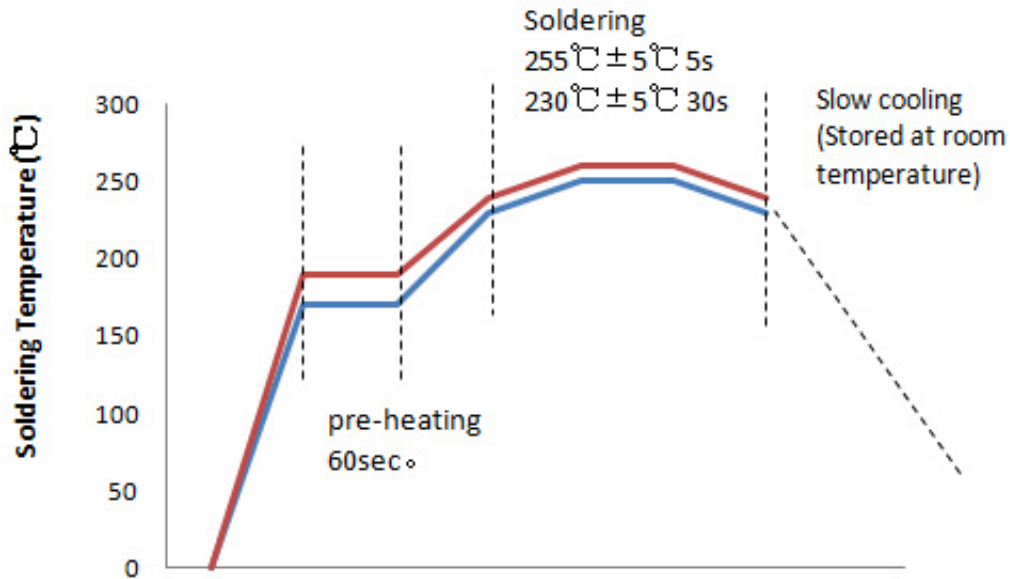
Code	(mm)
E1	1.75 ± 0.10
F	7.50 ± 0.10
P2	2.00 ± 0.10
D0	1.50 + 0.1/-0
D1	1.50 + 0.1/-0
P0	4.00 ± 0.10
10P0	40.0 ± 0.20
W	16.00 ± 0.30
P	8.00 ± 0.10
A0	5.3 ± 0.10
B0	9.8 ± 0.10
K0	2.3 ± 0.10
T	0.30 ± 0.05

### Direction of taping

The direction shall be seen from the top cover tape side



Solder reflow profile



Life Support Policy: Eaton does not authorize the use of any of its products for use in life support devices or systems without the express written approval of an officer of the Company. Life support systems are devices which support or sustain life, and whose failure to perform, when properly used in accordance with instructions for use provided in the labeling, can be reasonably expected to result in significant injury to the user.

Eaton reserves the right, without notice, to change design or construction of any products and to discontinue or limit distribution of any products. Eaton also reserves the right to change or update, without notice, any technical information contained in this bulletin.

**Eaton**  
**Electronics Division**  
1000 Eaton Boulevard  
Cleveland, OH 44122  
United States  
Eaton.com/electronics

© 2022 Eaton  
All Rights Reserved  
Printed in USA  
Publication No. ELX1135 BU-ELX21143  
January 2022

Eaton is a registered trademark.

All other trademarks are property of their respective owners.

Follow us on social media to get the latest product and support information.

