

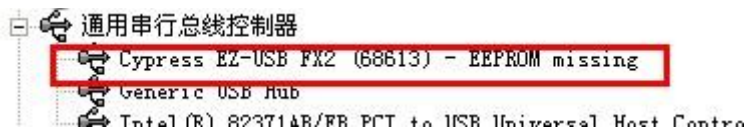
## How to reprogram the serial EEPROMs

For our New version of CY7C68013A USB Board:

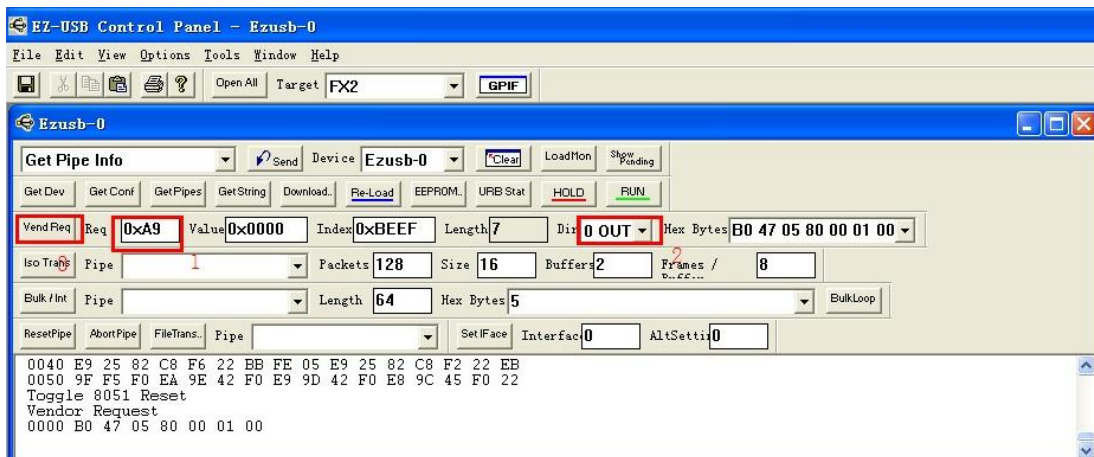
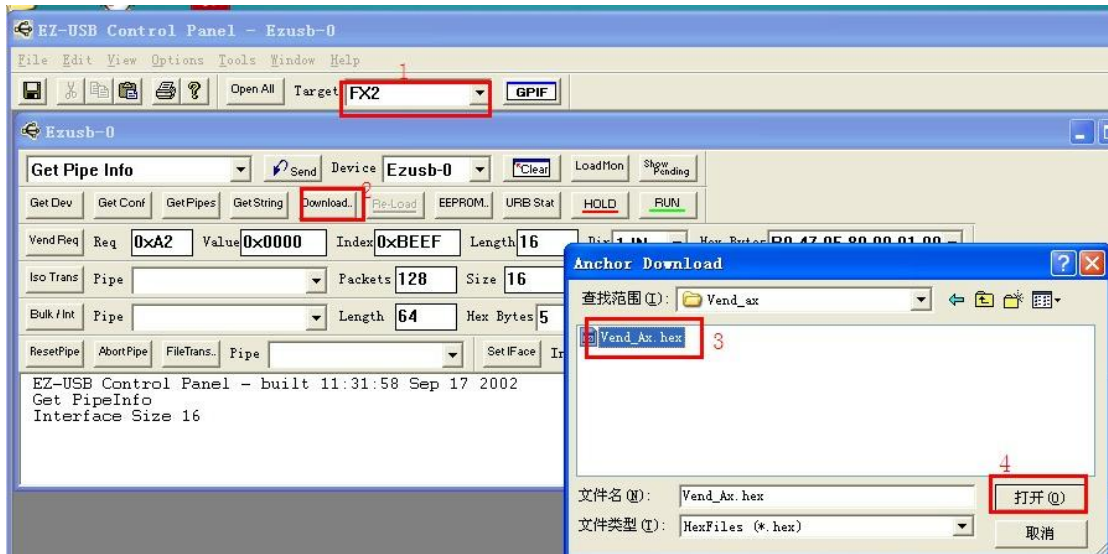
<http://www.wvshare.com/product/CY7C68013A-USB-Board-mini.htm>



1. Unplug the USB Cable from the CY7C68013A USB Board
2. Take off the jumper (SDA-SDA) on the picture
3. Connect the USB cable to the CY7C68013A USB Board
4. At this step, you should see the board enumerate as below:

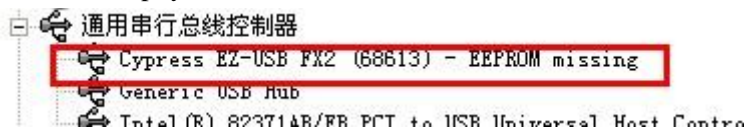


5. Connect the Jumper (SDA-SDA), and Open the EZ-USB Control Panel, and operate as follow:



6. About 3 seconds later, unplug the USB Cable and then reconnect it.

7. At this step, you should see the board still enumerate as below:



8. Are-program a new EEPROM iic file:

