



DESCRIPTION

USB high-speed PHY device for ULPI interface

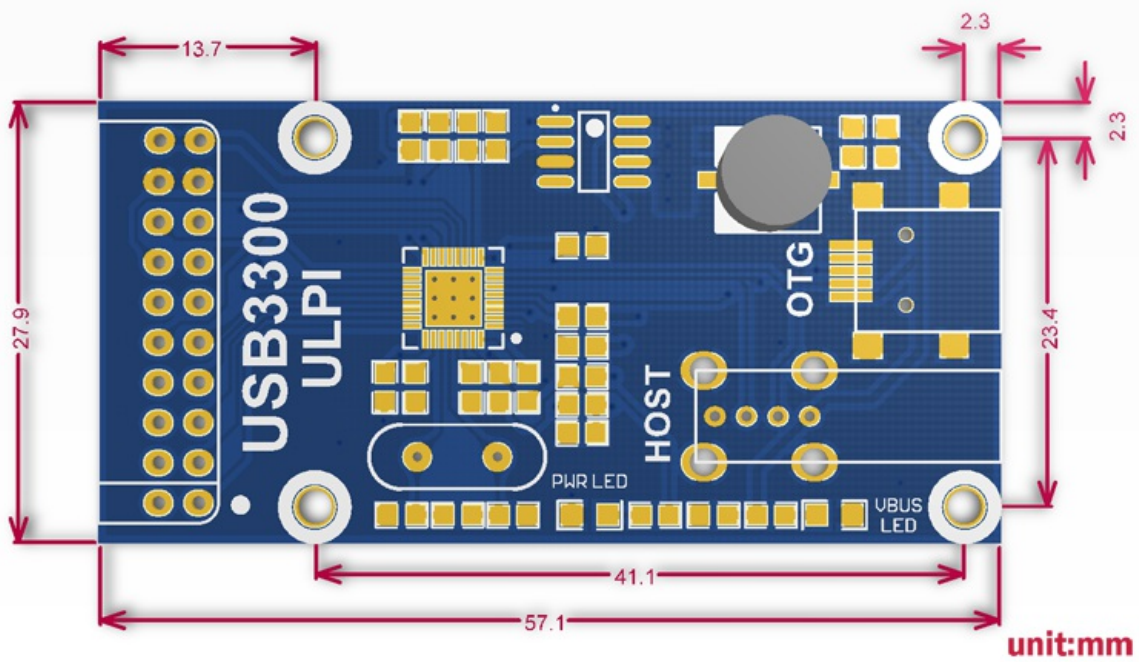
Overview

The **USB3300 USB HS Board** is an accessory board which acts as the USB high-speed external PHY device for ULPI interface, features the USB3300, MIC2075-1BM onboard.

Features

USB3300, MIC2075-1BM, ULPI interface

Dimensions



Downloads

Development resources: demo codes, schematic, datasheets, etc.

Wiki: www.waveshare.com/wiki/USB3300_USB_HS_Board