

EP Cores (6598170121)



Part Number: 6598170121

98 EP CORE SET

EP designs reduce the effect of residual air gap upon the effective permeability of the core, hence they minimize coil volume for a given inductance. EP cores also provide a high degree of isolation from adjacent components and are advantageously used in low power devices, matching and broadband transformers.

□ EP cores can be supplied with the center post gapped to a mechanical dimension or an A_L value.

[Catalog Drawing](#)

[3D Model](#)

Weight indicates is per pair or set.

Weight: 6 (g)

Dim	mm	mm tol	nominal inch	inch misc.
A	18.1	± 0.40	0.713	—
B	8.4	± 0.40	0.331	—
C	11	± 0.30	0.433	—
D	5.7	± 0.20	0.224	—
E	12	± 0.40	0.472	—
F	5.7	± 0.20	0.224	—
K	3.45	min	0.135	—

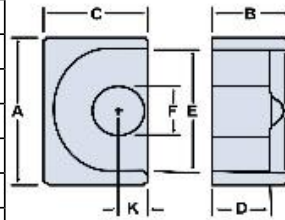



Chart Legend

$\Sigma l / A$: Core Constant, l_e : Effective Path Length, A_e : Effective Cross- Sectional Area, V_e : Effective Core Volume

A_L : Inductance Factor 

Explanation of Part Numbers: Digits 1 & 2 = product class and 3 & 4 = material grade.

Electrical Properties	
A_L (nH)	2300 ±25%
A_e (cm ²)	0.336
$\Sigma l / A$ (cm ⁻¹)	8
l_e (cm)	2.68
V_e (cm ³)	0.899
A_{min} (cm ²)	0.252

A_L value is measured at 1 kHz, B < 10 gauss

Mouser Electronics

Authorized Distributor

Click to View Pricing, Inventory, Delivery & Lifecycle Information:

[Fair-Rite:](#)

[6598170121](#)