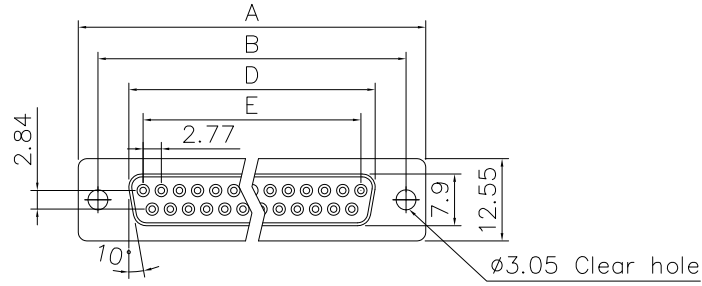
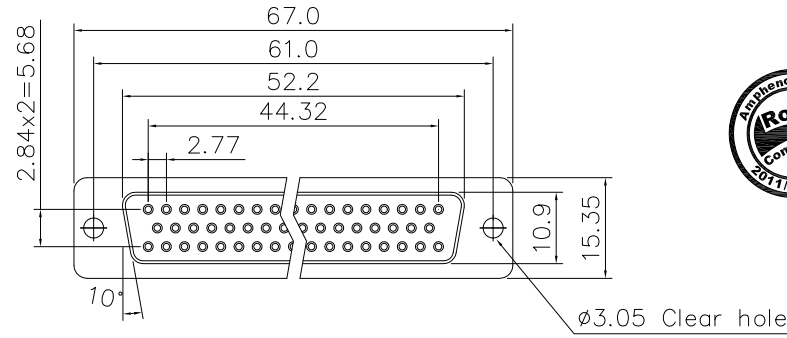


This document is the property of Amphenol Corporation and is delivered on the express condition that it is not to be disclosed, reproduced or used, in whole or in part, for manufacture or sale by anyone other than Amphenol Corporation without its prior consent, & that no right is granted to disclose or to use any information in this document.

Customer drawing



9,15,25,37 Positions



50 Positions



Dimensions

Positions	A	B	D	E	F
9	30.81	24.99	16.33	11.08	19.20
15	39.20	33.30	24.70	19.39	27.70
25	53.05	47.04	38.40	33.24	41.10
37	69.40	63.50	54.80	49.86	57.30

REVISIONS				
SYM	ECN	DESCRIPTION	DATE	APPROVED
1	HK--	Initial Release	04/11/08	IP
2	HK--	Change dim. 30.84 to 30.81mm	08/27/13	IP

D-SUB TECHNICAL DATA

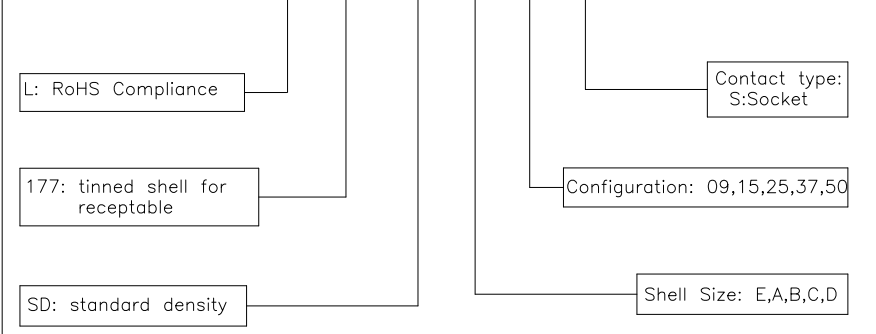
SHELL : Steel, 100u" Tin Over 50u" min nickel over 50u" min Copper
 BODY : Glass-Filled Thermoplastic PBT,UL94V-0
 CONTACTS : Copper alloy
 15u" Gold over 50u" nickel on mating area
 100u" tin over 50u" nickel on solder area

ELECTRICAL : Voltage rating 250 VAC/RMS
 Current Rating :3 AMP
 Withstanding Voltage >1000 VAC/RMS
 Insulation resistance >1000 M Ohms
 Contact resistance 20 mOhms max

MARKING : Amphenol...(Series No.)
 Commercial reference
 Manufacturing date

PRODUCT CODE

L 177 SD X XX S



UNLESS OTHERWISE SPECIFIED TOLERANCES		APPROVAL		DATE
U.S.	METRIC	DRAWN	Checked	08/27/13
.X +/-	0.50	Felix Liu	Tony Tang	08/27/13
.XX +/-	0.30	CHECKED		
.XXX +/-	0.20	CHECKED		
FRACTIONS +/-	5'	DRAWING FILE :		
ANGLES +/-		ANGLE OF PROJECTION		
FOR MATERIALS AND FINISHES SEE NOTES		REMOVE SHARP EDGES		
DIMENSIONS		U.S. INCHES		
METRIC		MM		

Amphenol		Amphenol East Asia Limited A	
TITLE			
Solder cup type, SD Series			
SIZE	DRAWING NO.	REV.	
A4	C L177SDXXXX	2	
SCALE	NONE	SHEET 1 OF 1	