

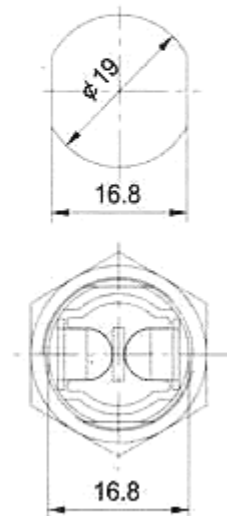
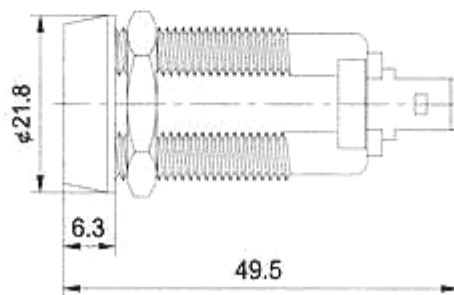
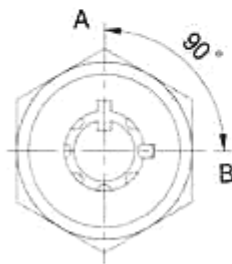
DESCRIPTIONS:

- Zinc alloy die cast housing and cylinder.
- Bright chrome plated standard.
- 7 pin tumbler mechanism.
- Steel made tubular keys, nickel plated.
- Key may be withdrawn in one or both positions.
- Silver plated contacts and terminals.
- S212Z 2 position (off-on) 2 spade terminals.
- S212ZA 2 position (off-on) 2 spade terminals, spring loaded for momentary contact.
- Hex nut mounted.
- 10000 combinations available.



Recommended hole size

Unit: mm



SPECIFICATIONS:

- Contact Rating: 4A 125VAC, 2A 250VAC.
- Contact resistance: 10 Milli - Ohms Max.
- Insulation Resistance: 500 Meg - Ohms Min. (500VDC)
- Dielectric Strength: 1500VAC - 1 Minute.

KEY-PULL

FIGURES

○-Off Position

┃-Indicates Key-Pull

●-Indicates No Key-Pull



Fig.1



Fig.2

Fig. No.	Lock Number	Pole	Positions	Terminals	Key Pulls	Turn	↑	→	Type
1	S212Z-1	1	2	2	1	90 °	Off	On	SPST
2	S212Z-2	1	2	2	2	90 °	Off	On	SPST
1	S212ZA	1	2	2	1	90 °	Off	(On)	SPST