

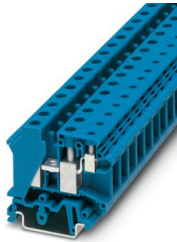
# UK 10-PLUS BU - Feed-through terminal block



3001475

<https://www.phoenixcontact.com/us/products/3001475>

Please be informed that the data shown in this PDF document is generated from our online catalog. Please find the complete data in the user documentation. Our general terms of use for downloads are valid.



1-level terminal block with double connection on one side, cross section: 0.5 - 10 mm<sup>2</sup>, AWG: 24 - 6, width: 10.2 mm, color: blue

## Your advantages

- These twin modular terminal blocks are designed for the basic task of potential branching
- Two independent conductor connections can be used on the control cabinet side
- Universal foot for mounting on NS 35.. or NS 32... DIN rails
- Easy connection of different types of conductors with different cross sections
- Can be bridged in the terminal center, even with neighboring feed-through terminal blocks aligned

## Commercial data

Item number	3001475
Packing unit	50 pc
Minimum order quantity	50 pc
Sales key	BE12
Product key	BE1212
Catalog page	Page 467 (C-1-2019)
GTIN	4017918089948
Weight per piece (including packing)	21.6 g
Weight per piece (excluding packing)	21.6 g
Customs tariff number	85369010
Country of origin	PL

# UK 10-PLUS BU - Feed-through terminal block



3001475

<https://www.phoenixcontact.com/us/products/3001475>

## Technical data

### Product properties

Product type	Multi-conductor terminal block
Number of connections	3
Number of rows	2
Potentials	1

### Insulation characteristics

Overvoltage category	III
Degree of pollution	3

### Electrical properties

Rated surge voltage	8 kV
Maximum power dissipation for nominal condition	1.82 W

### Connection data

Number of connections per level	3
Nominal cross section	10 mm <sup>2</sup>

#### 1 level

Screw thread	M4
Note	Feed-through
Tightening torque	1.5 ... 1.8 Nm
Stripping length	11 mm
Connection in acc. with standard	IEC 60947-7-1
Conductor cross section rigid	0.5 mm <sup>2</sup> ... 16 mm <sup>2</sup>
Cross section AWG	20 ... 6 (converted acc. to IEC)
Conductor cross section flexible	0.5 mm <sup>2</sup> ... 10 mm <sup>2</sup>
Conductor cross section, flexible [AWG]	20 ... 8 (converted acc. to IEC)
Conductor cross-section flexible (ferrule without plastic sleeve)	0.5 mm <sup>2</sup> ... 10 mm <sup>2</sup>
Flexible conductor cross section (ferrule with plastic sleeve)	0.5 mm <sup>2</sup> ... 6 mm <sup>2</sup>
2 conductors with same cross section, solid	0.5 mm <sup>2</sup> ... 4 mm <sup>2</sup>
2 conductors with same cross section, flexible	0.5 mm <sup>2</sup> ... 4 mm <sup>2</sup>
2 conductors with same cross section, flexible, with ferrule without plastic sleeve	0.5 mm <sup>2</sup> ... 2.5 mm <sup>2</sup>
2 conductors with the same cross section, flexible, with TWIN ferrule with plastic sleeve	0.5 mm <sup>2</sup> ... 4 mm <sup>2</sup>
Nominal current	57 A (with 10 mm <sup>2</sup> conductor cross section)
Maximum load current	76 A (In case of a 16 mm <sup>2</sup> conductor connection, the maximum load current must not be exceeded by the total current of all connected conductors.)
Nominal voltage	800 V
Nominal cross section	10 mm <sup>2</sup>

1st level connection right

# UK 10-PLUS BU - Feed-through terminal block



3001475

<https://www.phoenixcontact.com/us/products/3001475>

Screw thread	M3
Tightening torque	0.6 ... 0.8 Nm
Stripping length	7 mm
Connection in acc. with standard	IEC 60947-7-1
Conductor cross section rigid	0.2 mm <sup>2</sup> ... 6 mm <sup>2</sup>
Cross section AWG	24 ... 10 (converted acc. to IEC)
Conductor cross section flexible	0.2 mm <sup>2</sup> ... 4 mm <sup>2</sup>
Conductor cross-section flexible (ferrule without plastic sleeve)	0.25 mm <sup>2</sup> ... 4 mm <sup>2</sup>
Flexible conductor cross section (ferrule with plastic sleeve)	0.25 mm <sup>2</sup> ... 4 mm <sup>2</sup>
2 conductors with same cross section, solid	0.2 mm <sup>2</sup> ... 1.5 mm <sup>2</sup>
2 conductors with same cross section, flexible	0.2 mm <sup>2</sup> ... 1.5 mm <sup>2</sup>
2 conductors with same cross section, flexible, with ferrule without plastic sleeve	0.25 mm <sup>2</sup> ... 1.5 mm <sup>2</sup>
2 conductors with the same cross section, flexible, with TWIN ferrule with plastic sleeve	0.5 mm <sup>2</sup> ... 1.5 mm <sup>2</sup>
Nominal current	32 A (with 6 mm <sup>2</sup> conductor cross section)
Maximum load current	41 A (In the case of a 6 mm <sup>2</sup> conductor cross section, the maximum load current must not be exceeded by the total current of all connected conductors)
Nominal voltage	800 V
Nominal cross section	4 mm <sup>2</sup>

## Dimensions

Width	10.2 mm
Height	53 mm
Depth on NS 32	52 mm
Depth on NS 35/7,5	47 mm
Depth on NS 35/15	54.5 mm

## Material specifications

Color	blue
Flammability rating according to UL 94	V0
Insulating material group	I
Insulating material	PA
Static insulating material application in cold	-60 °C
Temperature index of insulation material (DIN EN 60216-1 (VDE 0304-21))	130 °C
Relative insulation material temperature index (Elec., UL 746 B)	130 °C
Fire protection for rail vehicles (DIN EN 45545-2) R22	HL 1 - HL 3
Fire protection for rail vehicles (DIN EN 45545-2) R23	HL 1 - HL 3
Fire protection for rail vehicles (DIN EN 45545-2) R24	HL 1 - HL 3
Fire protection for rail vehicles (DIN EN 45545-2) R26	HL 1 - HL 3
Calorimetric heat release NFPA 130 (ASTM E 1354)	28 MJ/kg
Surface flammability NFPA 130 (ASTM E 162)	passed
Specific optical density of smoke NFPA 130 (ASTM E 662)	passed
Smoke gas toxicity NFPA 130 (SMP 800C)	passed

# UK 10-PLUS BU - Feed-through terminal block



3001475

<https://www.phoenixcontact.com/us/products/3001475>

## Mechanical properties

### Mechanical data

Open side panel	No
-----------------	----

## Environmental and real-life conditions

### Ambient conditions

Ambient temperature (operation)	-60 °C ... 110 °C (Operating temperature range incl. self-heating; for max. short-term operating temperature, see RTI Elec.)
Ambient temperature (storage/transport)	-25 °C ... 60 °C (for a short time, not exceeding 24 h, -60 °C to +70 °C)
Ambient temperature (assembly)	-5 °C ... 70 °C
Ambient temperature (actuation)	-5 °C ... 70 °C
Permissible humidity (operation)	20 % ... 90 %
Permissible humidity (storage/transport)	30 % ... 70 %

## Standards and regulations

Connection in acc. with standard	IEC 60947-7-1
	IEC 60947-7-1

## Mounting

Mounting type	NS 35/7,5
	NS 35/15
	NS 32

# UK 10-PLUS BU - Feed-through terminal block

3001475

<https://www.phoenixcontact.com/us/products/3001475>



## Drawings

### Circuit diagram



# UK 10-PLUS BU - Feed-through terminal block



3001475

<https://www.phoenixcontact.com/us/products/3001475>

## Classifications

### ECLASS

ECLASS-11.0	27141120
ECLASS-13.0	27250101

### ETIM

ETIM 9.0	EC000897
----------	----------

### UNSPSC

UNSPSC 21.0	39121400
-------------	----------

# UK 10-PLUS BU - Feed-through terminal block



3001475

<https://www.phoenixcontact.com/us/products/3001475>

## Environmental product compliance

### EU RoHS

Fulfills EU RoHS substance requirements	Yes, No exemptions
---	--------------------

### China RoHS

Environment friendly use period (EFUP)	EFUP-E
	No hazardous substances above the limits

### EU REACH SVHC


REACH candidate substance (CAS No.)	No substance above 0.1 wt%
-------------------------------------	----------------------------

# UK 10-PLUS BU - Feed-through terminal block

3001475

<https://www.phoenixcontact.com/us/products/3001475>

## Accessories

 Note: Applying some accessories below might limit this product.

### IS-K 10 - Bridge bar isolator

1303337

<https://www.phoenixcontact.com/us/products/1303337>



Bridge bar isolator, color: gray

### ISSBI 10-10 - Bridge

0301521

<https://www.phoenixcontact.com/us/products/0301521>



Bridge, pitch: 10 mm, number of positions: 10, color: silver

 Max. current carrying capacity: 57 A



# UK 10-PLUS BU - Feed-through terminal block



3001475

<https://www.phoenixcontact.com/us/products/3001475>

## FBI 2-10 - Fixed bridge

0203483

<https://www.phoenixcontact.com/us/products/0203483>

Fixed bridge, pitch: 10 mm, number of positions: 2, color: silver



---


## FBI 10-10 - Fixed bridge

0203276

<https://www.phoenixcontact.com/us/products/0203276>

Fixed bridge, pitch: 10 mm, number of positions: 10, color: silver



 Max. current carrying capacity: 76 A

# UK 10-PLUS BU - Feed-through terminal block



3001475

<https://www.phoenixcontact.com/us/products/3001475>

## EB 2-10 - Insertion bridge

0203153

<https://www.phoenixcontact.com/us/products/0203153>

Insertion bridge, pitch: 10 mm, number of positions: 2, color: gray



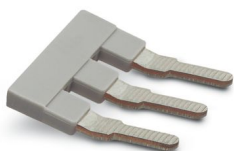
---

## EB 3-10 - Insertion bridge

0203328

<https://www.phoenixcontact.com/us/products/0203328>

Insertion bridge, pitch: 10 mm, number of positions: 3, color: gray



# UK 10-PLUS BU - Feed-through terminal block

3001475

<https://www.phoenixcontact.com/us/products/3001475>

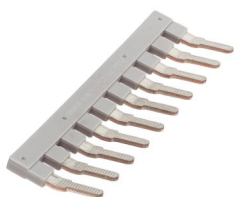


## EB 10-10 - Insertion bridge

0203137

<https://www.phoenixcontact.com/us/products/0203137>

Insertion bridge, pitch: 10 mm, number of positions: 10, color: gray



## WS 5-10 - Warning label

1004429

<https://www.phoenixcontact.com/us/products/1004429>

Warning label, Plate, yellow/black, labeled: Lightning flash and warning in English, mounting type: plug in, for terminal block width: 10 mm, diameter: 0 mm



# UK 10-PLUS BU - Feed-through terminal block



3001475

<https://www.phoenixcontact.com/us/products/3001475>

## WS 4-10 - Warning label

1004225

<https://www.phoenixcontact.com/us/products/1004225>

Warning label, Plate, yellow/black, labeled: Lightning flash and warning in English, mounting type: plug in, for terminal block width: 10 mm, diameter: 0 mm



---

## TS-KK 3 - Separating plate

2770215

<https://www.phoenixcontact.com/us/products/2770215>

Separating plate, depth: 16 mm, width: 0.5 mm, height: 14 mm, color: gray



# UK 10-PLUS BU - Feed-through terminal block



3001475

<https://www.phoenixcontact.com/us/products/3001475>

## NS 32 PERF 2000MM-VPE 10 - DIN rail perforated

1201002

<https://www.phoenixcontact.com/us/products/1201002>



DIN rail perforated, Pack of 10 (20 m), acc. to EN 60715, material: Steel, galvanized, passivated with a thick layer, G profile, color: silver

---

## NS 32 UNPERF 2000MM-VPE 10 - DIN rail, unperforated

1201015

<https://www.phoenixcontact.com/us/products/1201015>



DIN rail, unperforated, Pack of 10 (20 m), acc. to EN 60715, material: Steel, galvanized, passivated with a thick layer, G profile, color: silver

# UK 10-PLUS BU - Feed-through terminal block



3001475

<https://www.phoenixcontact.com/us/products/3001475>

## NS 35/ 7,5 PERF 2000MM - DIN rail perforated

0801733

<https://www.phoenixcontact.com/us/products/0801733>



DIN rail perforated, Pack of 25 (50 m), acc. to EN 60715, material: Steel, galvanized, passivated with a thick layer, Standard profile, color: silver

---

## NS 35/ 7,5 UNPERF 2000MM - DIN rail, unperforated

0801681

<https://www.phoenixcontact.com/us/products/0801681>



DIN rail, unperforated, Pack of 25 (50 m), acc. to EN 60715, material: Steel, galvanized, passivated with a thick layer, Standard profile, color: silver

# UK 10-PLUS BU - Feed-through terminal block



3001475

<https://www.phoenixcontact.com/us/products/3001475>

## NS 35/ 7,5 WH PERF 2000MM - DIN rail perforated

1204119

<https://www.phoenixcontact.com/us/products/1204119>



DIN rail perforated, Pack of 25 (50 m), acc. to EN 60715, material: Steel, Galvanized, white passivated, Standard profile, color: silver

---

## NS 35/ 7,5 WH UNPERF 2000MM-VPE 10 - DIN rail, unperforated

1204122

<https://www.phoenixcontact.com/us/products/1204122>



DIN rail, unperforated, Pack of 10 (20 m), acc. to EN 60715, material: Steel, Galvanized, white passivated, Standard profile, color: silver

# UK 10-PLUS BU - Feed-through terminal block



3001475

<https://www.phoenixcontact.com/us/products/3001475>

## NS 35/ 7,5 AL UNPERF 2000MM - DIN rail, unperforated

0801704

<https://www.phoenixcontact.com/us/products/0801704>



DIN rail, unperforated, Pack of 25 (50 m), acc. to EN 60715, material: Aluminum, uncoated, Standard profile, color: silver

---

## NS 35/ 7,5 ZN PERF 2000MM - DIN rail perforated

1206421

<https://www.phoenixcontact.com/us/products/1206421>



DIN rail perforated, Pack of 25 (50 m), acc. to EN 60715, material: Steel, galvanized, Standard profile, color: silver



# UK 10-PLUS BU - Feed-through terminal block

3001475

<https://www.phoenixcontact.com/us/products/3001475>



## NS 35/ 7,5 ZN UNPERF 2000MM - DIN rail, unperforated

1206434

<https://www.phoenixcontact.com/us/products/1206434>



DIN rail, unperforated, Pack of 25 (50 m), acc. to EN 60715, material: Steel, galvanized, Standard profile, color: silver

---

## NS 35/ 7,5 CU UNPERF 2000MM-VPE 10 - DIN rail, unperforated

0801762

<https://www.phoenixcontact.com/us/products/0801762>



DIN rail, unperforated, Pack of 10 (20 m), acc. to EN 60715, material: Copper, uncoated, Standard profile, color: copper-colored

# UK 10-PLUS BU - Feed-through terminal block

3001475

<https://www.phoenixcontact.com/us/products/3001475>



## NS 35/ 7,5 CAP - End cap

1206560

<https://www.phoenixcontact.com/us/products/1206560>

DIN rail end piece, for DIN rail NS 35/7.5



---

## NS 35/15 PERF 2000MM - DIN rail perforated

1201730

<https://www.phoenixcontact.com/us/products/1201730>



DIN rail perforated, Pack of 25 (50 m), similar to EN 60715, material: Steel, galvanized, passivated with a thick layer, Standard profile, color: silver

# UK 10-PLUS BU - Feed-through terminal block



3001475

<https://www.phoenixcontact.com/us/products/3001475>

## NS 35/15 UNPERF 2000MM - DIN rail, unperforated

1201714

<https://www.phoenixcontact.com/us/products/1201714>



DIN rail, unperforated, Pack of 25 (50 m), similar to EN 60715, material: Steel, galvanized, passivated with a thick layer, Standard profile, color: silver

---

## NS 35/15 WH PERF 2000MM - DIN rail perforated

0806602

<https://www.phoenixcontact.com/us/products/0806602>



DIN rail perforated, Pack of 25 (50 m), similar to EN 60715, material: Steel, Galvanized, white passivated, Standard profile, color: white

# UK 10-PLUS BU - Feed-through terminal block



3001475

<https://www.phoenixcontact.com/us/products/3001475>

## NS 35/15 WH UNPERF 2000MM-VPE 10 - DIN rail, unperforated

1204135

<https://www.phoenixcontact.com/us/products/1204135>



DIN rail, unperforated, Pack of 10 (20 m), similar to EN 60715, material: Steel, Galvanized, white passivated, Standard profile, color: silver

---

## NS 35/15 AL UNPERF 2000MM - DIN rail, unperforated

1201756

<https://www.phoenixcontact.com/us/products/1201756>



DIN rail, unperforated, similar to EN 60715, material: Aluminum, uncoated, Standard profile, color: silver

# UK 10-PLUS BU - Feed-through terminal block

3001475

<https://www.phoenixcontact.com/us/products/3001475>



## NS 35/15 ZN PERF 2000MM - DIN rail perforated

1206599

<https://www.phoenixcontact.com/us/products/1206599>



DIN rail perforated, Pack of 25 (50 m), similar to EN 60715, material: Steel, galvanized, Standard profile, color: silver

---

## NS 35/15 ZN UNPERF 2000MM - DIN rail, unperforated

1206586

<https://www.phoenixcontact.com/us/products/1206586>



DIN rail, unperforated, Pack of 25 (50 m), similar to EN 60715, material: Steel, galvanized, Standard profile, color: silver

# UK 10-PLUS BU - Feed-through terminal block

3001475

<https://www.phoenixcontact.com/us/products/3001475>



## NS 35/15 CU UNPERF 2000MM-VPE 10 - DIN rail, unperforated

1201895

<https://www.phoenixcontact.com/us/products/1201895>



DIN rail, unperforated, Pack of 10 (20 m), similar to EN 60715, material: Copper, uncoated, Standard profile, color: copper-colored

---

## NS 35/15 CAP - End cap

1206573

<https://www.phoenixcontact.com/us/products/1206573>

DIN rail end piece, for DIN rail NS 35/15



# UK 10-PLUS BU - Feed-through terminal block

3001475

<https://www.phoenixcontact.com/us/products/3001475>



## NS 35/15-2,3 UNPERF 2000MM-VPE 10 - DIN rail, unperforated

1201798

<https://www.phoenixcontact.com/us/products/1201798>



DIN rail, unperforated, Pack of 10 (20 m), acc. to EN 60715, material: Steel, galvanized, passivated with a thick layer, Standard profile 2.3 mm, color: silver

---

## ZB10,LGS:U-N - Marker for terminal blocks

1053438

<https://www.phoenixcontact.com/us/products/1053438>



Marker for terminal blocks, Strip, white, labeled, can be labeled with: CMS-P1-PLOTTER, horizontal: U, V, W, N, GND, U, V, W, N, GND, mounting type: snapped, for terminal block width: 10.2 mm, lettering field size: 10,15 x 10,5 mm, Number of individual labels: 10

# UK 10-PLUS BU - Feed-through terminal block

3001475

<https://www.phoenixcontact.com/us/products/3001475>



## UCT-TM 10 CUS - Marker for terminal blocks

0829623

<https://www.phoenixcontact.com/us/products/0829623>



Marker for terminal blocks, can be ordered: by sheet, white, labeled according to customer specifications, mounting type: snap into tall marker groove, for terminal block width: 10.2 mm, lettering field size: 8.9 x 9.6 mm, Number of individual labels: 36

---

## CLIPFIX 35 - End bracket

3022218

<https://www.phoenixcontact.com/us/products/3022218>



Quick mounting end clamp for NS 35/7,5 DIN rail or NS 35/15 DIN rail, with marking option, width: 9.5 mm, color: gray



# UK 10-PLUS BU - Feed-through terminal block



3001475

<https://www.phoenixcontact.com/us/products/3001475>

## CLIPFIX 35-5 - End bracket

3022276

<https://www.phoenixcontact.com/us/products/3022276>



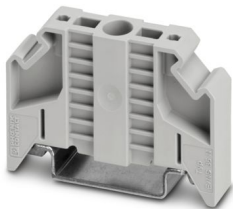
Quick mounting end clamp for NS 35/7,5 DIN rail or NS 35/15 DIN rail, with marking option, with parking option for FBS...5, FBS...6, KSS 5, KSS 6, width: 5.15 mm, color: gray

---

## E/NS 35 N - End bracket

0800886

<https://www.phoenixcontact.com/us/products/0800886>



End clamp, width: 9.5 mm, color: gray

# UK 10-PLUS BU - Feed-through terminal block

3001475

<https://www.phoenixcontact.com/us/products/3001475>



## PSBJ 4/15/6 FARBLOS - Test plug strip

0303419

<https://www.phoenixcontact.com/us/products/0303419>



Test plug strip, number of positions: 1, color: transparent

---

## PSBJ 4/15/6 WH - Test plug strip

0303312

<https://www.phoenixcontact.com/us/products/0303312>



Test plug strip, number of positions: 1, color: white

# UK 10-PLUS BU - Feed-through terminal block



3001475

<https://www.phoenixcontact.com/us/products/3001475>

## PSBJ 4/15/6 RD - Test plug strip

0303325

<https://www.phoenixcontact.com/us/products/0303325>



Test plug strip, number of positions: 1, color: red

---

## PSBJ 4/15/6 BU - Test plug strip

0303354

<https://www.phoenixcontact.com/us/products/0303354>



Test plug strip, number of positions: 1, color: blue

# UK 10-PLUS BU - Feed-through terminal block

3001475

<https://www.phoenixcontact.com/us/products/3001475>

## PSBJ 4/15/6 YE - Test plug strip

0303367

<https://www.phoenixcontact.com/us/products/0303367>



Test plug strip, number of positions: 1, color: yellow

---

## PSBJ 4/15/6 GN - Test plug strip

0303370

<https://www.phoenixcontact.com/us/products/0303370>



Test plug strip, number of positions: 1, color: green

# UK 10-PLUS BU - Feed-through terminal block

3001475

<https://www.phoenixcontact.com/us/products/3001475>



## PSBJ 4/15/6 VT - Test plug strip

0303383

<https://www.phoenixcontact.com/us/products/0303383>



Test plug strip, number of positions: 1, color: violet

---

## PSBJ 4/15/6 GY - Test plug strip

0303396

<https://www.phoenixcontact.com/us/products/0303396>



Test plug strip, number of positions: 1, color: gray

# UK 10-PLUS BU - Feed-through terminal block

3001475

<https://www.phoenixcontact.com/us/products/3001475>



## PSBJ 4/15/6 BK - Test plug strip

0303406

<https://www.phoenixcontact.com/us/products/0303406>



Test plug strip, number of positions: 1, color: black

---

## PSB 4/7/6 - Test plug strip

0303299

<https://www.phoenixcontact.com/us/products/0303299>



Test plug strip, number of positions: 1, color: silver

# UK 10-PLUS BU - Feed-through terminal block



3001475

<https://www.phoenixcontact.com/us/products/3001475>

## E/UK - End bracket

1201442

<https://www.phoenixcontact.com/us/products/1201442>

End bracket, Mounting on a DIN rail NS 32 or NS 35, material: PA, color: gray



---

## E/UK 1 - End bracket

1201413

<https://www.phoenixcontact.com/us/products/1201413>

End clamps, for supporting the ends of double-level and three-level terminal blocks, width: 10 mm, color: gray



# UK 10-PLUS BU - Feed-through terminal block



3001475

<https://www.phoenixcontact.com/us/products/3001475>

## SZS 1,0X4,0 VDE - Screwdriver

1205066

<https://www.phoenixcontact.com/us/products/1205066>



Screwdriver, slot-headed, VDE insulated, size: 1.0 x 4.0 x 100 mm, 2-component grip, with non-slip grip

---

Phoenix Contact 2024 © - all rights reserved

<https://www.phoenixcontact.com>

Phoenix Contact USA  
586 Fulling Mill Road  
Middletown, PA 17057, United States  
(+717) 944-1300  
[info@phoenixcon.com](mailto:info@phoenixcon.com)