

Miniature Rocker Switch

Q-2653

TYPE: **MRS-101-9C4**

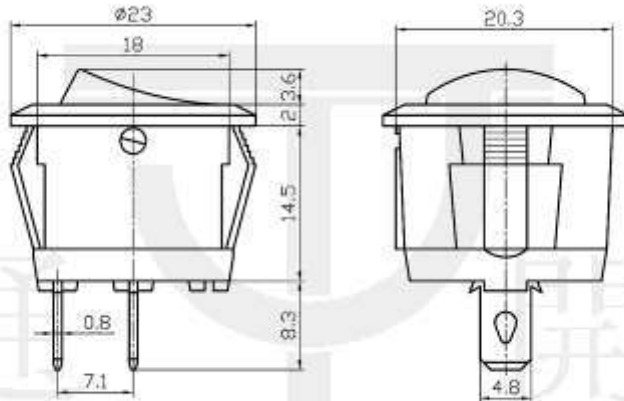
Cap marking



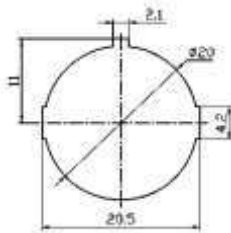
SPECIFICATIONS

Rating: 10A 125V AC; 6A 250V AC
Contact R: 35mΩ max
Insulation R: 500V DC 100MΩ min
Dielectric Strength: 1 Minute 1500V AC
Operating Temperature: -25°C ~ +85°C
Electrical Life: 10,000 Cycles

Outline Drawing



Mounting



Circuitry

