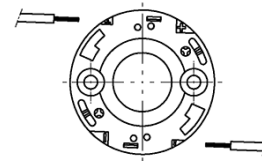
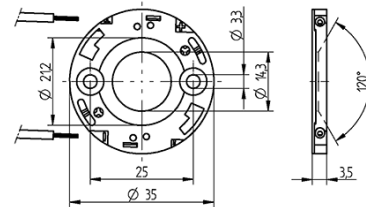
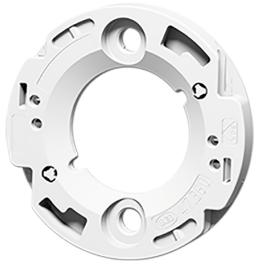


# COB connector Ø 35 mm for LED array 16 x 19 mm 47.360.1110.50



8.0 + 1 mm



0,35-0,5 mm<sup>2</sup>



0,35-0,5 mm<sup>2</sup>

# COB connector Ø 35 mm for LED array 16 x 19 mm 47.360.1110.50



## DESCRIPTION

With integrated COB holder and interface for reflectors 47.935 and 35.835

Easy pre-assembly of LED

Screw mounting: for screws M3 and locking washer

Max. torque for screw fixing 0.5 Nm\*

Strip length: 8+1 mm

Polarity symbols of connector and LED must be observed in assembly

Specification of LED manufacturer must be observed

In a series connection of LED modules, the air gap and creepage distances has to be sized that each module covers the total voltage of the series connection

\*Please note the max torque of the COB manufacturer

Product name:	COB connector Ø 35 mm for LED array 16 x 19 mm
Mounting method 1:	Screw mount
Mounting method 2:	P2F fixing with 28.902.-102
Mounting method 3:	Tip for fastening by screws: The screw chamber of the 47.360 series has a height of 1.9 mm. The screw head must not be higher, otherwise the reflector will fit poorly or not at all.
Prefixation of COB:	Yes
Material:	Housing: PBT Contacts: CuSn
LED manufacturer:	Philips
LED Typ:	Fortimo 1203 Gen.6
Conductor cross-section:	0.35-0.5 mm <sup>2</sup>
Rating:	Rating: 3A / 150 VDC
Weight:	2.4
Pkg.:	945

## Suitable for the following LED models:

LED Manufacturer	LED Type	More Information
Philips	Fortimo 1203 Gen.6	<a href="http://www.lighting.philips.co.uk/oem-emea">http://www.lighting.philips.co.uk/oem-emea</a>