



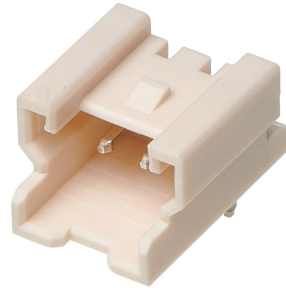
**Part Number :** [353630250](#)

**Product Description :** 2.00mm Pitch Sherlock Wire-to-Board Header, Right-Angle, with Positive Lock, 2 Circuits, White, Glass-filled

**Series Number :** 35363

**Status :** New Business Not Supported

**Product Category :** PCB Headers and Receptacles




---

## Documents & Resources

---

## Product Environment Compliance

### Compliance

GADSL/IMDS	Not Relevant
China RoHS	
EU ELV	Not Relevant
Low-Halogen Status	Not Low-Halogen per IEC 61249-2-21
REACH SVHC	Not Contained per D(2023)3788-DC (14 Jun 2023)
EU RoHS	Compliant per EU 2015/863

### Multiple Part Product Compliance Statements

- Eu RoHS
- REACH SVHC
- Low-Halogen

### Multiple Part Industry Compliance Documents

- IPC 1752A Class C
- IPC 1752A Class D
- Molex Product Compliance Declaration
- IEC-62474
- chemSHERPA (xml)

### EU RoHS Certificate of Compliance

---

## Part Details

### General

Status	New Business Not Supported
Category	PCB Headers and Receptacles
Series	35363
Description	2.00mm Pitch Sherlock Wire-to-Board Header, Right-Angle, with Positive Lock, 2 Circuits, White, Glass-filled
Application	Signal, Wire-to-Board
Component Type	PCB Header
Product Family	Sherlock Wire-to-Board Connector System
Product Name	Sherlock
UPC	822350634717

### Agency

CSA	LR19980
UL	E29179

### Electrical

Current - Maximum per Contact	2.0A
Voltage - Maximum	125V

### Physical

Breakaway	No
Circuits (Loaded)	2
Circuits (maximum)	2
Color - Resin	Natural
Durability (mating cycles max)	30
First Mate / Last Break	No
Flammability	94V-0
Glow-Wire Capable	No
Guide to Mating Part	No
Keying to Mating Part	None
Lock to Mating Part	Yes
Material - Plating Mating	Tin
Material - Plating Termination	Tin

Material - Resin	Nylon
Net Weight	0.253/g
Number of Rows	1
Orientation	Right Angle
Packaging Type	Bag
PC Tail Length	3.20mm
PCB Locator	No
PCB Retention	Yes
PCB Thickness - Recommended	1.60mm
Pitch - Mating Interface	2.00mm
Polarized to Mating Part	Yes
Polarized to PCB	No
Shrouded	Partial
Stackable	No
Temperature Range - Operating	-40° to +105°C
Termination Interface Style	Through Hole

---

This document was generated on Dec 12, 2023