

Series 803 Mighty Mouse ¼ Turn Bayonet Receptacle

803-003 and 803-004 Ordering Information

**In-Line****Jam Nut****Flange Mount**

Push-To-Mate, ¼ Turn to Lock. These quick-mating connectors feature bayonet pins on the receptacle. Simply push the connectors together, then rotate the plug coupling nut 90° to lock the connectors together.

Three Shell Mounting Options: Jam nut with O-ring for rear panel mounting, elliptical flange for front or rear panel mounting, or in-line receptacles for free-hanging cables.

Two Shell Styles: Choose the integral band platform for direct attachment of a cable shield. Install a heat-shrink boot, or overmold directly onto the band platform. An accessory thread is available for attaching strain reliefs and backshells.

How To Order

Sample Part Number	803-003	-07	NF	6-7	S	N
Series (See Table I)	803-003 = Receptacle with Banding Platform 803-004 = Receptacle with Accessory Thread					
Shell Style (See Table II)	-01 = In-Line -02 = Flange Mount -07 = Jam Nut					
Shell Material and Finish	C = Aluminum / Black Anodize (Non-Conductive); RoHS Compliant M = Aluminum / Electroless Nickel; RoHS Compliant MT = Aluminum / Nickel-PTFE RoHS Compliant NF = Aluminum / Cadmium with Olive Drab Chromate ZNU = Aluminum / Zinc-Nickel with Black Chromate Z1 = Stainless Steel / Passivated; RoHS Compliant					
Shell Size - Insert Arrangement	See Contact Arrangements Page F-2					
Contact Type	Connector supplied with contacts Connector supplied without contacts P = Pin A = Pin Connector, less contacts S = Socket B = Socket Connector, less contacts Connectors with contacts are supplied with signal and/or power crimp contacts. These contacts are not installed. Coaxial contacts and non-standard signal contacts are ordered separately.					
Shell Key Positions (See Table III)	N = Normal X = Pos. X Y = Pos. y Z = Pos. Z					

F

Table I: Series

803-003 Plug with Banding Platform	803-004 Plug with Accessory Thread

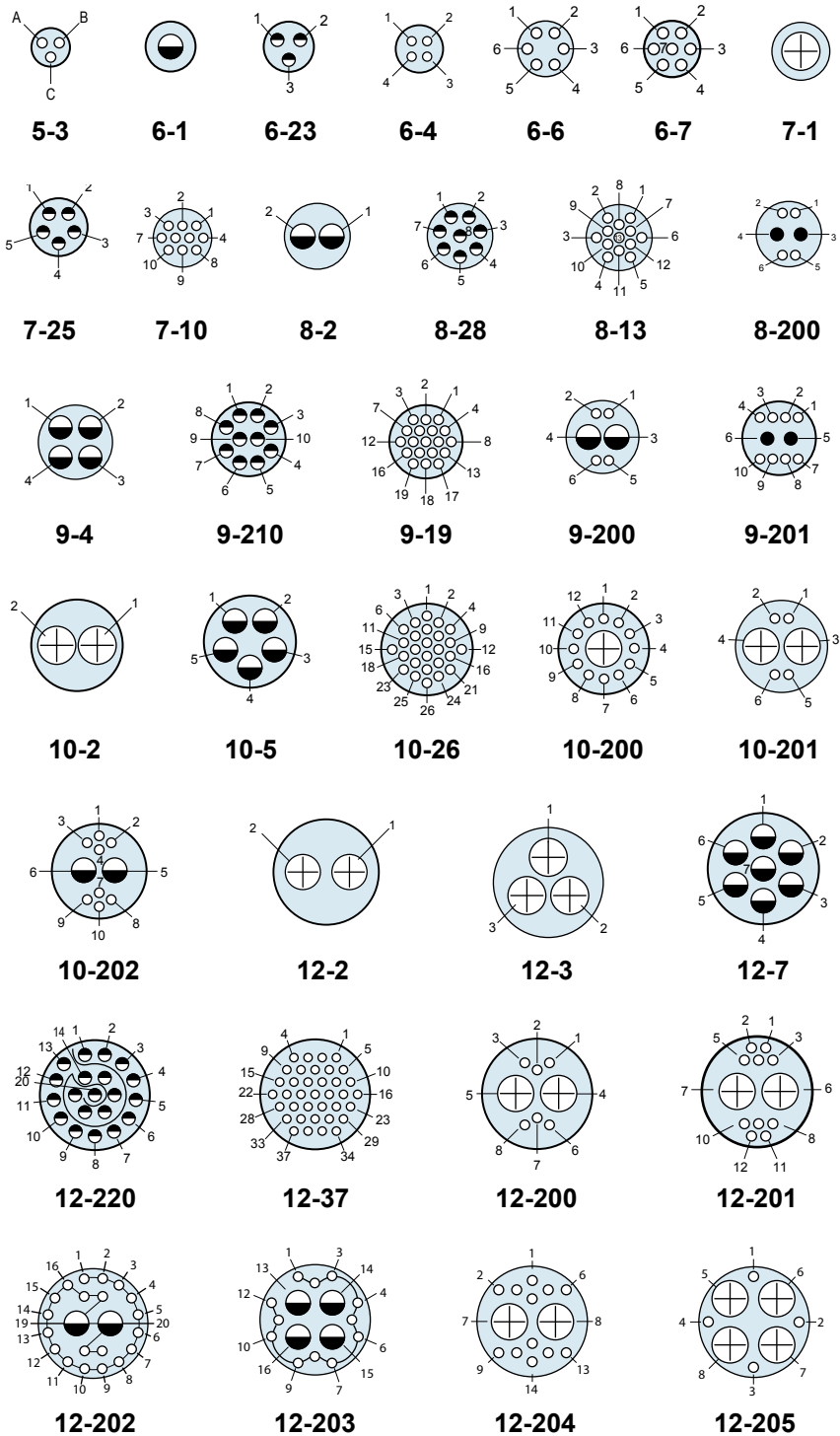
Table II: Shell Style

-01 In-line	-02 Flange Mount	-07 Jam Nut

Dimensions in Inches (millimeters) are subject to change without notice.

Contact Arrangements					
Contact Arr.	No. of Contacts				
	#23	#20	#20HD	#16	#12*
5-3	3				
6-1				1	
6-23			3		
6-4	4				
6-6	6				
6-7	7				
7-1					1
7-25			5		
7-10	10				
8-2				2	
8-28			8		
8-13	13				
8-200	4	2			
9-4				4	
9-210			10		
9-19	19				
9-200	4			2	
9-201	8	2			
10-2					2
10-5				5	
10-26	26				
10-200	12				1
10-201	4				2
10-202	8			2	
12-2					2
12-3					3
12-7				7	
12-220			20		
12-37	37				
12-200	6				2
12-201	10				2
12-202	20			2	
12-203	12			4	
12-204	12				2
12-205	4				4
14-5					5
14-12				12	

Mating Face View of Pin Connector (Socket connector numbers are reversed)



*All arrangements with #12 contacts available with keyed Twinax contacts. Use mode code -688

Contact Legend

#23 ◯ #20HD ● #20 ● #16 ◐ #12 ⊕

Dimensions in Inches (millimeters) are subject to change without notice.

Series 803 Mighty Mouse 1/4 Turn Bayonet Couplings Contact Arrangements



Series 803

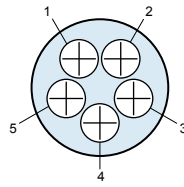
Contact Arrangements					
Contact Arr.	No. of Contacts				
	#23	#20	#20HD	#16	#12*
14-235			35		
14-55	55				
14-204	40			2	
14-205	32			4	
14-206	34				2
14-207	20				4

*All arrangements with #12 contacts available with keyed Twinax contacts. Use mode code -688

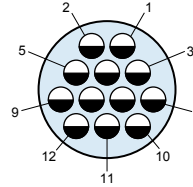
Contact Legend

#23 #20HD #20 #16 #12

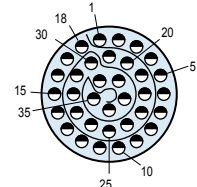
Mating Face View of Pin Connector (Socket connector numbers are reversed)



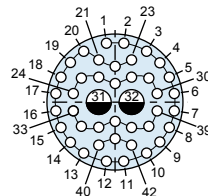
14-5



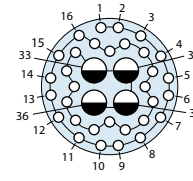
14-12



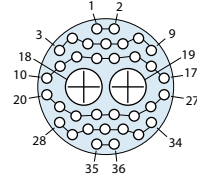
14-235



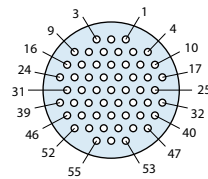
14-204



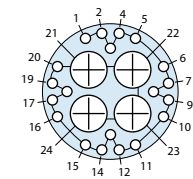
14-205



14-206

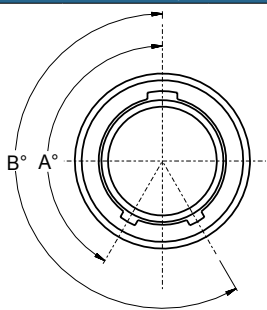


14-55



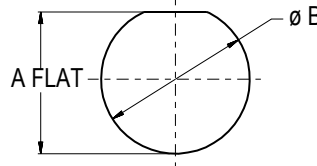
14-207

Series 803 Plug Key Positions



Pos.	A°	B°
N	150°	210°
X	75°	210°
Y	95°	230°
Z	140°	275°

Jam Nut Panel Cutout



Shell Size	A Flat		Ø B	
	In. ± .002	mm. ± 0.05	In.	mm.
5	.355	9.02	.382	9.70
6	.415	10.54	.445	11.30
7	.541	13.74	.572	14.53
8	.601	15.27	.635	16.13
9	.601	15.27	.643	16.33
10	.729	18.52	.760	18.29
12	.850	21.59	.885	22.48
14	1.031	26.19	1.072	27.23

Dimensions in Inches (millimeters) are subject to change without notice.



Mouser Electronics

Authorized Distributor

Click to View Pricing, Inventory, Delivery & Lifecycle Information:

Glenair:

[803-003-07ZNU10-26PN](#) [803-004-07M6-7SX](#) [803-003-02NF6-7SX](#) [803-003-01C6-4PN](#) [803-003-01M7-10SX](#) [803-003-07M6-4PN](#) [803-003-02M14-55SZ](#) [803-003-07C6-7SX](#) [803-003-07M5-3PN](#) [803-004-07M9-19PN](#) [803-003-07M6-7PN](#) [803-003-07NF8-13SN](#) [803-004-07NF6-1SN](#) [803-003-07M10-26PN](#) [803-003-07Z110-26SN](#) [803-004-07NF9-19SN](#) [803-003-07C7-10PN](#) [803-003-07Z16-7PN](#) [803-003-01NF6-7PN](#)