

Data sheet Stop switch.

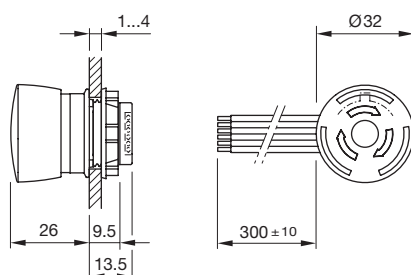
Part No.: 84-6840.0040

Technical data

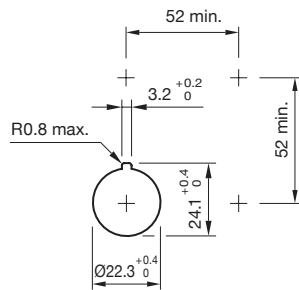


Front dimension	Ø 32 mm
Terminal	Flat ribbon cable
Operating Travel	Ca. 4 mm
Lens illumination	non illuminative
Lens colour	Grey
Lens shape	mushroom-head
Lens material	Plastic
Lens optics	opaque
Back panel depth	13.5 mm
Housing colour	Grey
Housing material	Plastic
Weight	0.036 kg
IP Protection	IP20 rear side
Contact material	Gold
Switching action	Maintained
Switching system	Slow-make switching element
Contacts	2 NC
Operating temperature	- 25 °C ... + 70 °C
Approbations	CCC, UL
Operating force	17 N ± 4 N
Climate resistance	Damp heat, cyclic: 96 hours, + 25 °C / 97 %, + 55 °C / 93 % relative humidity, as per EN IEC 60068-2-30 , Damp heat, steady: 56 days, + 40 °C / 93 % relative humidity, as per EN IEC 60068-2-78, Dry heat: 96 hours, + 65 °C, as per EN IEC 60068-2-2, Low temperature: 96 hours, - 25 °C (as per EN IEC 60068-2-1)) UV test, 56 days (EN 60068-2-5:1999), Saline mist: 96 hours, + 35 °C in chemical solution NaCl, as per EN IEC 60068-2-11
Mechanical lifetime	250 000 cycles of operation
Tightening torque	Fixing nut 0.8 Nm
Hints	<ul style="list-style-type: none"> ▪ Position indication ring black ▪ Twist to unlock clockwise
Product attributes	<ul style="list-style-type: none"> ▪ Twist to unlock clockwise

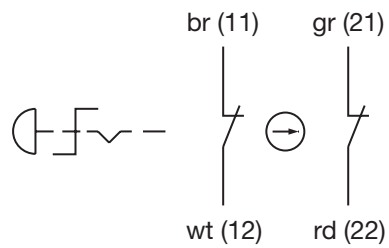
Dimensions



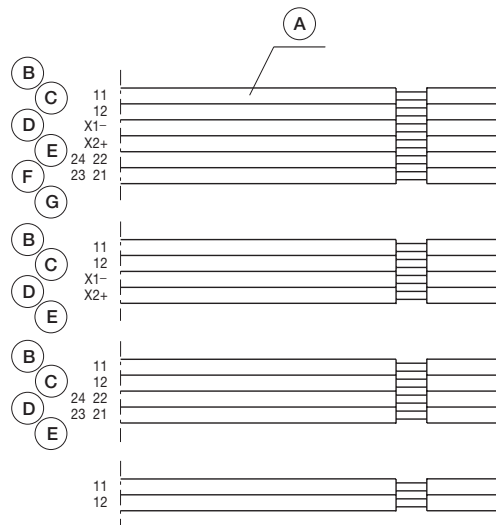
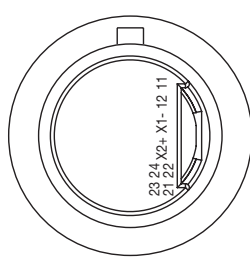
Mounting cut-outs



Wiring diagrams



Component layouts



1 \bar{O} + 1 S	(H)	11 / 12 + 23 / 24
2 \bar{O}	(I)	11 / 12 + 21 / 22
		X1- / X2+
<hr/>		
1 \bar{O}	(H)	11 / 12
	(I)	X1- / X2+
<hr/>		
1 \bar{O} + 1 S	(H)	11 / 12 + 23 / 24
2 \bar{O}		11 / 12 + 21 / 22
<hr/>		
1 \bar{O}	(H)	11 / 12

Dimensions [mm]

A = Cable
 B = white
 C = brown
 D = green
 E = yellow
 F = grey
 G = pink
 H = Terminals
 I = Illumination