

Feed-through terminal for direct mount, Screw connection, Mounting type: Mounting surface, Rated cross-section: 4 mm<sup>2</sup>, Width: 6 mm, Colour: Beige

### Business data

Packaging unit	100
Quantity unit	PC
Weight per piece (not including packaging)	4.4 g
Weight per piece (including packaging)	4.76 g
Unit of weight	G
Customs number	85369010
Country of origin	DE
Prio-Article	2158.2
Product description	Feed-through terminal for direct mount

2158.2

BKA 4/1 BG

---

## Technical data

---

### Dimensions

---

Length	22 mm
Width	6 mm
Height	23 mm
Pitch	6 mm

---

### Ratings

---

Rated voltage	400 V
Rated current	32 A
Rated cross-section	4 mm <sup>2</sup>
Rated impulse voltage	6 kV
Overvoltage category	III
Contamination degree	3
Maximum power dissipation for nominal condition	1.02 W

---

### Technical data

#### Connection data

Connection principle	Screw connection
Connection position	Lateral
Connections	2
Number of terminals per level	2
Number of levels	1
Wire cross-section single-core (rigid) / stranded, min.	0.2 mm <sup>2</sup>
Wire cross-section single core (rigid)/stranded, max.	4 mm <sup>2</sup>
Wire cross-section stranded, min.	0.2 mm <sup>2</sup>
Wire cross-section stranded, max.	4 mm <sup>2</sup>
Wire cross-section stranded with wire-end ferrules, min.	0.2 mm <sup>2</sup>
Wire cross-section stranded with wire-end ferrules, max.	4 mm <sup>2</sup>
Wire cross-section AWG, min.	22
Wire cross-section AWG, max.	12
Stripping length	9 mm
Screw head	Slotted
Screw threading	M 3
Tightening torque, min.	0.5 Nm
Tightening torque, max.	1 Nm

#### Materials

Insulation housing	Polyamide 6.6
Flammability class UL 94	V-2
Working temperature, min.	-40 °C
Working temperature, max.	105 °C

#### Further technical data

Mounting type	Mounting face
Gauge plug acc. to EN 60 947-1	A3
End plate required	✓

#### Print

Colour	Beige
--------	-------

---

### Technical data

---

#### Environmental Product Compliance

---

REACH Conform	yes
REACH Reference date	2021-07-08
REACH Candidate Substance Note	No
RoHS Conform	yes

---

---

### Approvals

---

#### Standards and regulations

---

EAC approval	TR ZU 004/2011
EAC approval granted	yes

#### CSA approval

---

CSA approval	C22.2 No 158
CSA approval granted	yes
CSA Usegroup C: rated voltage	300 V
CSA Usegroup C: rated current	25 A
CSA wire cross-section AWG, min.	22
CSA wire cross-section AWG, max.	12
CSA stripping length	9 mm
CSA torque, max.	1 Nm
CSA torque, min.	0.5 Nm

#### KEMA KEUR approval

---

KEMA KEUR approval	EN 60947-7-1:2009
KEMA KEUR approval granted	yes
KEMA rated voltage	400 V
KEMA rated current	32 A
KEMA rated impulse voltage	6 kV
KEMA wire cross-section single core (rigid), min.	0.2 mm <sup>2</sup>
KEMA wire cross-section single-core (rigid), max.	4 mm <sup>2</sup>
KEMA wire cross-section stranded, min.	0.2 mm <sup>2</sup>
KEMA wire cross-section stranded, max.	4 mm <sup>2</sup>

---

### Approvals

---

#### UL Recognized

---

UL approval	UL 1059
UL Usegroup B: rated voltage	300 V
UL Usegroup B: rated current	30 A
UL Usegroup C: rated voltage	300 V
UL Usegroup C: rated current	30 A
UL wire cross-section single-core (rigid) AWG, min.	22
UL wire cross-section single-core (rigid) AWG, max.	10
UL wire cross-section stranded AWG, min.	22
UL wire cross-section stranded AWG, max.	10
UL torque	7 Lb In
UL wire material	Cu
UL factory wiring	yes
UL field wiring	yes
UL Recognized	yes

---

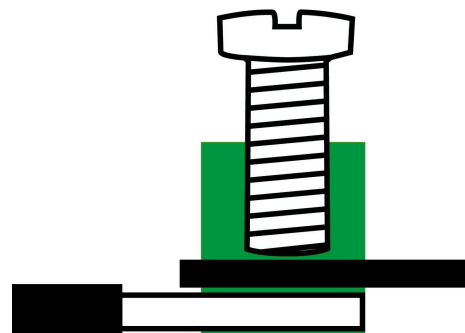
---

Media

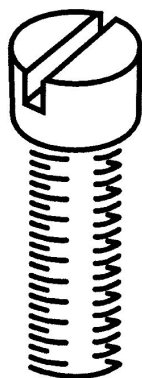
---



**EAC**



**M3**





---

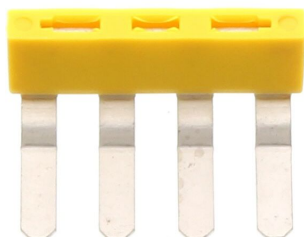
## Accessories

---

2158.2

BKA 4/1 BG

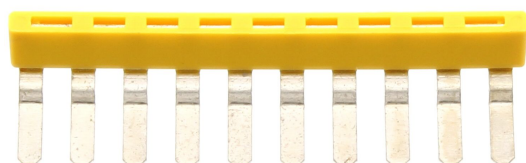
## Insulated external cross-connector



External insulated cross-connector, No. of poles: 4, Mounting type: Plug in, Width: 23 mm, Rated current: 27 A; Colour: Yellow

### detail.dataSheet.generalOrderData

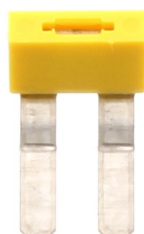
Product number:	detail.dataSheet.productName	GTIN (EAN)	detail.dataSheet.
2140.0	AQI 4/6/11 YE	4044211049614	500 ST



External insulated cross-connector, No. of poles: 10, Mounting type: Plug in, Width: 59.6 mm, Rated current: 27 A; Colour: Yellow

### detail.dataSheet.generalOrderData

Product number:	detail.dataSheet.productName	GTIN (EAN)	detail.dataSheet.
2141.0	AQI 10/6/11 YE	4044211049621	500 ST



External insulated cross-connector, No. of poles: 2, Mounting type: Plug in, Width: 10.8 mm, Rated current: 27 A; Colour: Yellow

### detail.dataSheet.generalOrderData

Product number:	detail.dataSheet.productName	GTIN (EAN)	detail.dataSheet.
2125.0	AQI 2/6/11 YE	4044211049447	500 ST

2158.2

BKA 4/1 BG

---

## Insulated external cross-connector

---



External insulated cross-connector, No. of poles: 3, Mounting type: Plug in, Width: 16.9 mm, Rated current: 27 A; Colour: Yellow

---

### detail.dataSheet.generalOrderData

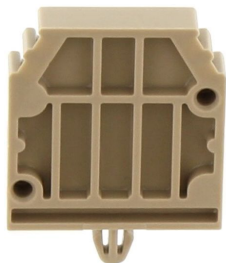
Product number:	detail.dataSheet.productName	GTIN (EAN)	detail.dataSheet
2126.0	AQI 3/6/11 YE	4044211049454	500 ST

---

2158.2

BKA 4/1 BG

## End support



End support, Mounting type: Mounting surface, Width: 5 mm, Colour: Beige

### detail.dataSheet.generalOrderData

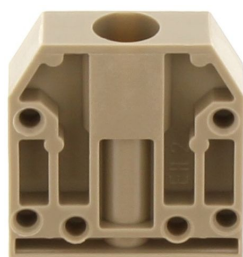
Product number:	detail.dataSheet.productName	GTIN (EAN)	detail.dataSheet.
2147.2	EH 2/Z BG	4044211049683	500 ST



End support, Mounting type: Mounting rail TS 15/5.5, Width: 9 mm, Colour: Beige

### detail.dataSheet.generalOrderData

Product number:	detail.dataSheet.productName	GTIN (EAN)	detail.dataSheet.
2945.2	EH 15 BG	4044211056728	500 ST



End support, Mounting type: Mounting surface, Width: 7 mm, Colour: Beige

### detail.dataSheet.generalOrderData

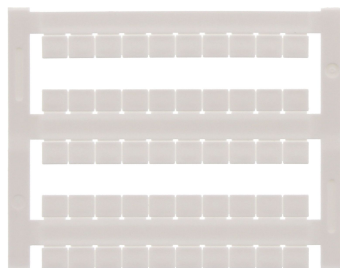
Product number:	detail.dataSheet.productName	GTIN (EAN)	detail.dataSheet.
2136.2	EH 2 BG	4044211049553	500 ST

Creation date 12.09.2021 10:41:13  
Subject to technical changes

2158.2

BKA 4/1 BG

## Quick marking



Terminal marker / Pocket Maxicard, Length: 5 mm, Width: 6 mm, Colour: White

### detail.dataSheet.generalOrderData

Product number:	detail.dataSheet.productName	GTIN (EAN)	detail.dataSheet.
4702.7	PMC SB 6/50 WH	4044211089986	500 ST

## Screwdriver



Screwdriver with bare blade, Colour: Black-grey

### detail.dataSheet.generalOrderData

Product number:	detail.dataSheet.productName	GTIN (EAN)	detail.dataSheet.
1086.0	SDB 0,6x3,5	4044211014797	500 ST