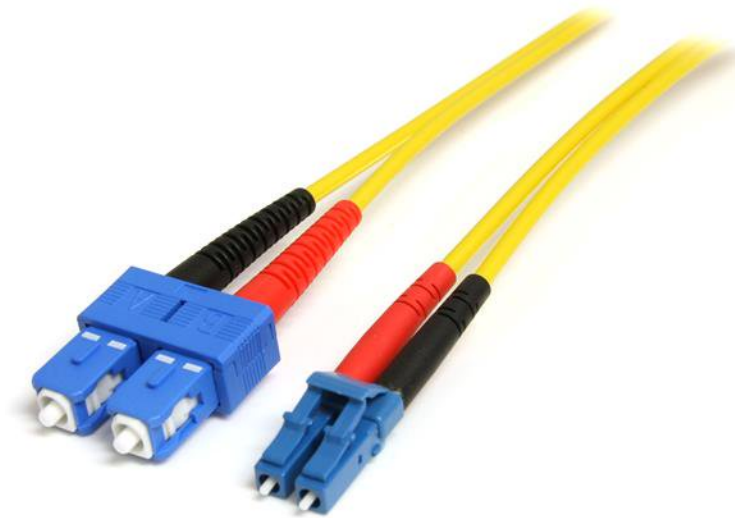


## Fiber Optic Cable - Single-Mode Duplex 9/125 - LSZH - LC/SC - 1 m

Product ID: SMFIBLCSC1



The SMFIBLCSC1 1m LC to SC Single-Mode Duplex Fiber Cable features 9/125 micron fiber for high-speed, high bandwidth data transmissions over Gigabit Ethernet and Fiber Channel networks, with support for duplex single-mode applications.

This LC-SC patch cable is housed in a LSZH (Low-Smoke, Zero-Halogen) flame retardant jacket, to ensure minimal smoke, toxicity and corrosion when exposed to high sources of heat, in the event of a fire - an ideal solution for use in industrial settings, central offices and schools, as well as residential settings where building codes are a consideration.

Each Duplex 9/125 (OS1) Single-Mode Fiber Patch Cable is individually tested and certified to be within acceptable optical insertion loss limits for guaranteed compatibility and 100% reliability, and is backed by our lifetime warranty.

### Certifications, Reports and Compatibility



### Applications

- Ideal solution for data applications requiring high speed data transmission
- Broadband systems
- Telecommunication / Data communication
- Used by long distance networks with mission critical data

### Features

- OS1 (9/125)
- LSZH (Low-Smoke, Zero-Halogen) cable jacket
- Attenuation loss meets or exceeds industry standards
- Molded connectors

|                                 |                            |   |
|---------------------------------|----------------------------|---|
| <b>Hardware</b>                 | Warranty                   | Lifetime  |
|                                 | Fiber Size                 | 9/125   |
|                                 | Fire Rating                | LSZH Rated (Low Smoke Zero Halogen)               |
| <b>Performance</b>              | Cable Rating               | 10Gbps / 40Gbps / 100Gbps                         |
|                                 | Fiber Classification       | OS1   |
|                                 | Maximum Data Transfer Rate | 100Gbps   |
| <b>Connector(s)</b>             | Connector A                | 1 - Fiber Optic LC Duplex Male                    |
|                                 | Connector B                | 1 - Fiber Optic SC Duplex Male                    |
| <b>Environmental</b>            | Humidity                   | 0~90% RH  |
|                                 | Operating Temperature      | -20°C to 60°C (-4°F to 140°F)                     |
|                                 | Storage Temperature        | -20°C to 60°C (-4°F to 140°F)                     |
| <b>Physical Characteristics</b> | Cable Length               | 1 m [3.3 ft]                                      |
|                                 | Color                      | Yellow  |
|                                 | Product Length             | 1 m [3.3 ft]                                      |
|                                 | Weight of Product          | 18 g [0.6 oz]                                     |
| <b>Packaging Information</b>    | Package Height             | 21.1 cm [8.3 in]                                  |
|                                 | Package Length             | 19.9 cm [7.8 in]                                  |
|                                 | Package Width              | 5.8 mm [0.2 in]                                   |
|                                 | Shipping (Package) Weight  | 0 kg [0.1 lb]                                     |
| <b>What's in the Box</b>        | Included in Package        | 1 - 1m Single Mode Duplex Fiber Patch Cable LC-SC |

Product appearance and specifications are subject to change without notice.