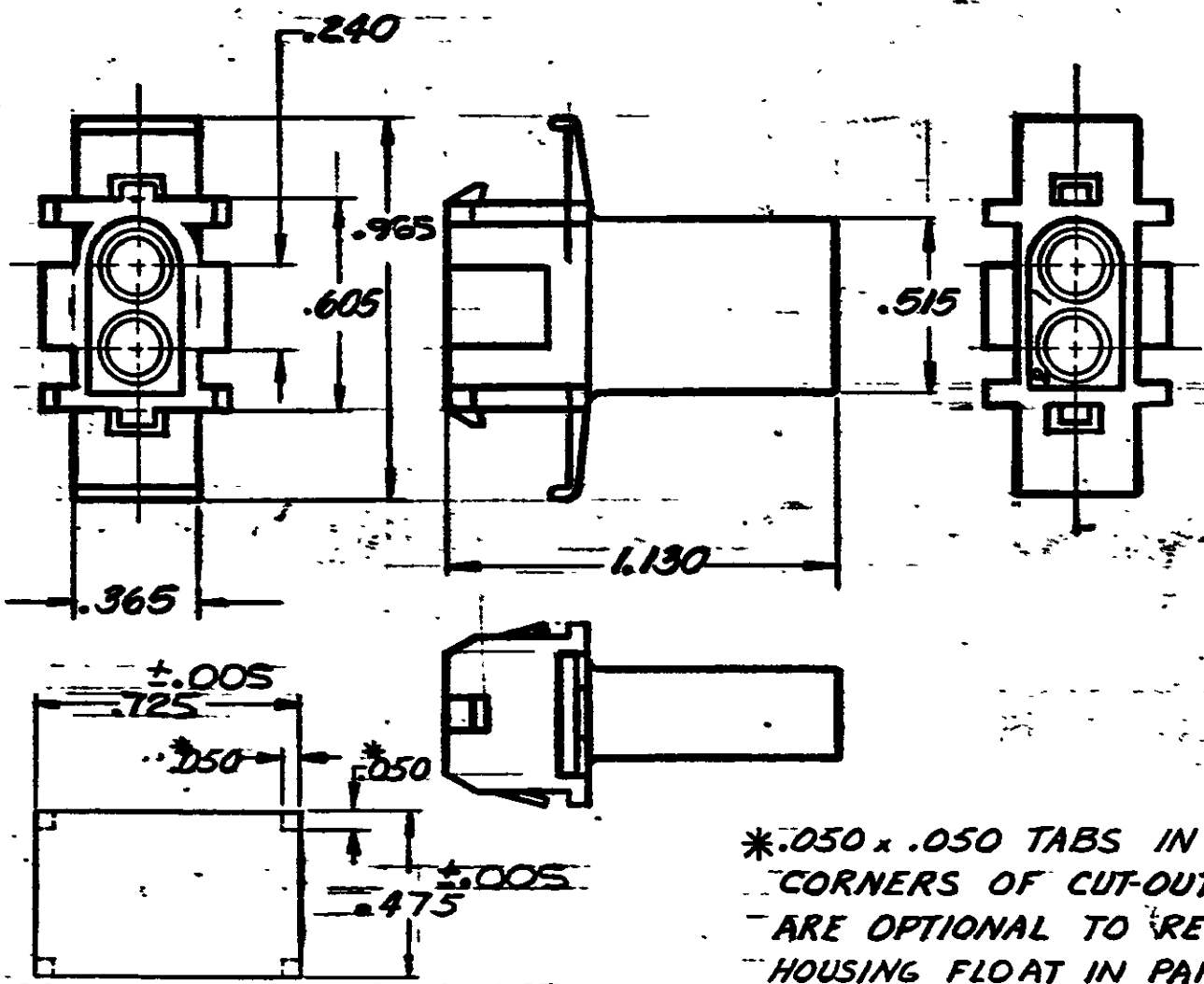


NUMBER 350345

1-350345-8	GRAY
1-350345-0	NATURAL
PART NO.	COLOR

1. AS SHOWN
2. ACCEPTS .140 SERIES PINS
3. MATES WITH PLUG 350344



PANEL THKS. .030 TO .065
RECOMMENDED PANEL CUT-OUT

*.050 x .050 TABS IN CORNERS OF CUT-OUT ARE OPTIONAL TO REDUCE HOUSING FLOAT IN PANEL.

DIMENSIONS IN INCHES. DO NOT SCALE PRINT.

©1972 BY AMP INCORPORATED. ALL RIGHTS RESERVED. AMP PRODUCTS COVERED BY PATENTS AND/OR PATENTS PENDING				CUSTOMER COPY REFERENCE ONLY	
MATERIAL AND FINISH NYLON				AMP INCORPORATED HARRISBURG PENNA.	
CLASS .140 PIN HSG				TYPE PANEL MOUNT	
WIRE RANGE — INSULATION # — #		TOLERANCE EXCEPT AS NOTED = .015 = 1" 0'		SCALE 2-1	
LTR		REVISION RECORD		ECN	
DR DAYTON HOLMES		DE		NO 350345	
CHK Humble 9-22-72		APP Humble 9-22-72		NAME 2 CIRCUIT CAP. 140 DIA	