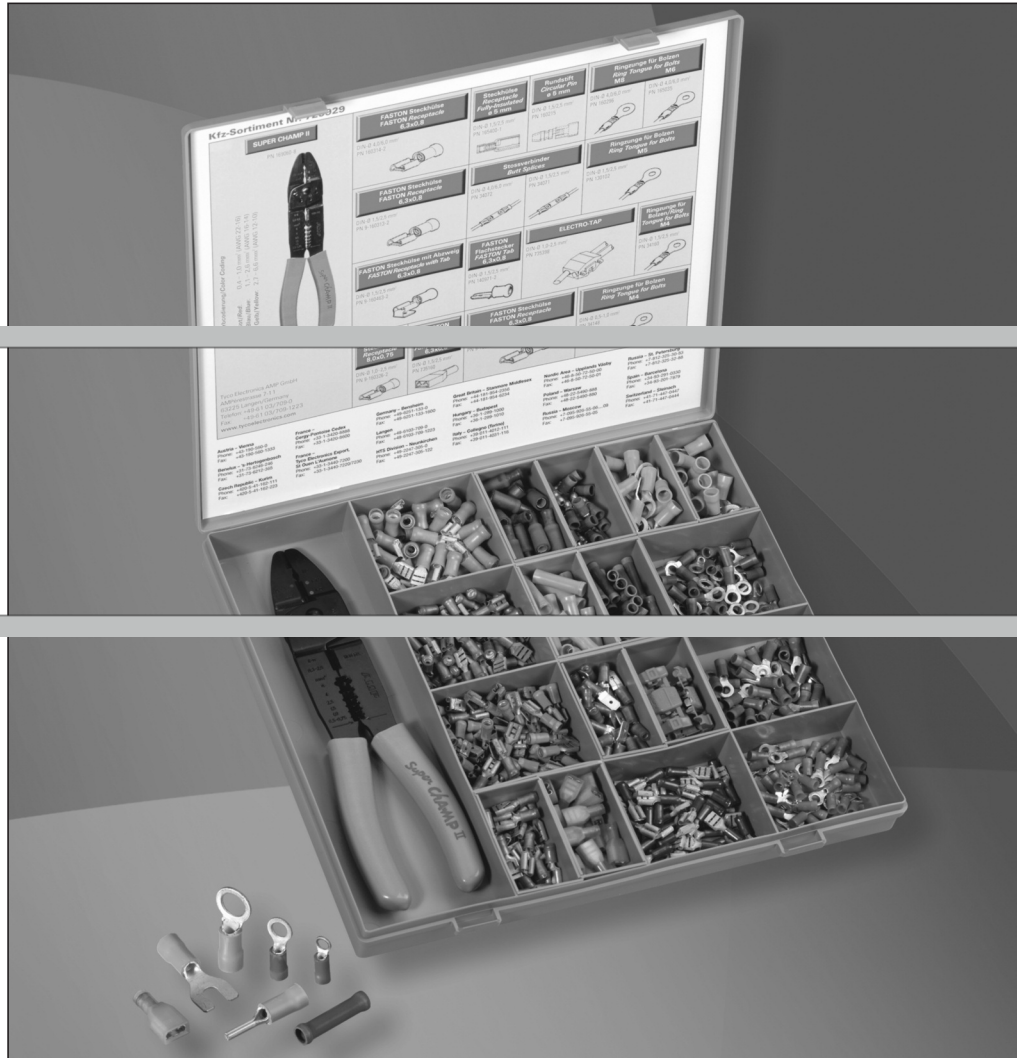
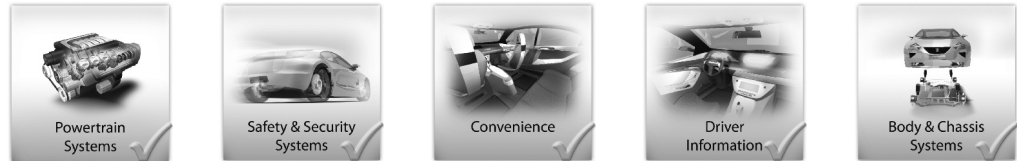


Introduction



Installations, maintenance or service, done on electrical equipment, often occur quickly and on short notice.

The necessary terminals and splices required are not available in time, or must be purchased in large lot sizes.

To prevent these situations – TE Connectivity has developed Service Kits, for a number of industries, filled with a broad range of the most widely used terminals and splices.

For convenience, we also offer empty Service Boxes with tool compartments, so you can tailor a kit to your own needs.

These attractive boxes are also ideal for other components. The partition dividers are available individually.

Custom tailored boxes can also be made available upon request. Please contact your local sales representative for further information.

As a supplement to our Standard Kits we offer customer-specified Crimp Service Kits. The product combination can be adjusted to your needs.

The portfolio of these kits contain various connectors and contacts together with suitable hand and extraction tools.

Service Kit

Service Kit
Part No. 725922

This Service Kit offers the electrician a broad range of terminals and splices for installation, maintenance and service.

Equipped with SUPER CHAMP II hand tool and 18 of the most often required terminals and splices, it allows for quick and easy service and repair work.



Description	Wire Size (mm ²)	Part Number	Package Quantity
PLASTI-GRIP Butt Splice	0.5–1.6	34070	20
PLASTI-GRIP Butt Splice	1.0–2.6	34071	20
PLASTI-GRIP Butt Splice	2.7–6.6	34072	20
PLASTI-GRIP Ring Tongue; M10	2.7–6.6	160124	20
PLASTI-GRIP Ring Tongue; M5	0.5–1.6	130014	20
PLASTI-GRIP Ring Tongue; M2.6	0.5–1.6	165004	20
PLASTI-GRIP Wire Pin, short	0.5–1.6	165143	20
PLASTI-GRIP Ring Tongue; M5	1.0–2.6	130102	20
PLASTI-GRIP Spade; M4	2.7–6.6	165015	20
PLASTI-GRIP Spade; M5	1.0–2.6	160171	20
PLASTI-GRIP Spade; M4	1.0–2.6	165012-1	20
PLASTI-GRIP Ring Tongue; M8	1.0–2.6	160296	20
PLASTI-GRIP Spade; M5	2.7–6.6	165017	20
PLASTI-GRIP Wire Pin, long	2.7–6.6	165085	20
PLASTI-GRIP Wire Pin, short	1.0–2.6	165075-1	20
PIDG FASTON Receptacle; 4.8 x 0.8	0.5–1.6	9-160481-1	20
PIDG FASTON Receptacle; 6.3 x 0.8	1.0–2.6	9-160313-2	20
ELECTRO-TAP	1.0–2.5	735398	10
SUPER CHAMP Hand Tool	–	169060-8	1

Service Kit (continued)

Service Kit
Part No. **725923**

This Kit contains the same components as Service Kit 725922, but with twice the quantity of terminals and splices and the Crimpac hand tool **825508-5**, which offers faster termination thanks to the simultaneous wire and insulation crimp.



Description	Wire Size (mm ²)	Part Number	Package Quantity
PLASTI-GRIP Butt Splice	0.5–1.6	34070	40
PLASTI-GRIP Butt Splice	1.0–2.6	34071	40
PLASTI-GRIP Butt Splice	2.7–6.6	34072	40
PLASTI-GRIP Ring Tongue; M10	2.7–6.6	160124	40
PLASTI-GRIP Ring Tongue; M5	0.5–1.6	130014	40
PLASTI-GRIP Ring Tongue; M2.6	0.5–1.6	165004	40
PLASTI-GRIP Wire Pin, short	0.5–1.6	165143	40
PLASTI-GRIP Ring Tongue; M5	1.0–2.6	130102	40
PLASTI-GRIP Spade; M4	2.7–6.6	165015	30
PLASTI-GRIP Spade; M5	1.0–2.6	160171	40
PLASTI-GRIP Spade; M4	1.0–2.6	165012-1	40
PLASTI-GRIP Ring Tongue; M8	1.0–2.6	160296	40
PLASTI-GRIP Spade; M5	2.7–6.6	165017	40
PLASTI-GRIP Wire Pin, long	2.7–6.6	165085	40
PLASTI-GRIP Wire Pin, short	1.0–2.6	165075-1	40
PIDG FASTON Receptacle; 4.8 x 0.8	0.5–1.6	9-160481-1	40
PIDG FASTON Receptacle; 6.3 x 0.8	1.0–2.6	9-160313-2	40
ELECTRO-TAP	1.0–2.5	735398	20
Crimpac Hand Tool	–	825508-5	1

Service Kit

Service Kit

Part No. **725929-1**

This Kit was specifically designed for maintenance, service and repair of cars and trucks.

It contains 17 different terminals and splices tuned to automotive requirements.

For a reliable crimp the SUPER CHAMP II hand tool, a multi-purpose tool with a metric bolt cutter, wire strip and cut facilities is included. This Kit is convenient for the installation of automotive accessories and other electrical modifications.



Description	Wire Size (mm ²)	Part Number	Package Quantity
PLASTI-GRIP Butt Splice	1.0–2.6	34071	20
PLASTI-GRIP Butt Splice	2.7–6.6	34072	15
PLASTI-GRIP Ring Tongue; M6	2.7–6.6	165035	15
PLASTI-GRIP Ring Tongue; M4	0.5–1.0	34148	50
PLASTI-GRIP Ring Tongue; M4	1.0–2.6	34160	50
PLASTI-GRIP Ring Tongue; M5	1.0–2.6	130102	50
Round Pin Receptacle 5.0 mm	–	165400-1	20
Circular Pin 5.0 mm	–	160215	20
FASTON Receptacle insulated; 6.3 x 0.8	1.0–2.5	735160	20
PLASTI-GRIP Ring Tongue; M8	1.0–2.6	160296	15
PIDG FASTON Receptacle; 6.3 x 0.8	0.5–1.6	9-160583-2	50
PIDG FASTON Receptacle with tab; 6.3 x 0.8	1.0–2.6	9-160463-2	50
PIDG FASTON Receptacle; 6.3 x 0.8	1.0–2.6	9-160313-2	50
PIDG FASTON Receptacle; 6.3 x 0.8	2.7–6.6	160314-2	40
PIDG FASTIN-FASTON Receptacle; 8.0 x 0.75	1.0–2.6	9-160326-2	20
PIDG FASTON Tab; 6.3 x 0.8	1.0–2.6	140971-2	40
ELECTRO-TAP	1.0–2.5	735398	5
SUPER CHAMP Hand Tool	–	169060-8	1

AMPLISET

AMPLISET

Part No. **725972**

The AMPLISET fulfills all of your requirements for a flexible easy to use Service Kit. Equipped with the well-known SUPER CHAMP II hand tool and 21 different crimp terminals, the AMPLISET provides all the requirements for quick service and repair of the most common electrical problems.

Terminals, splices and a hand tool are contained in five separate clear plastic pouches.

Two snap fasteners are used to close the AMPLISET, making it a hand sized package convenient to store. It can also be fixed to the wall.



Description	Wire Size (mm ²)	Part Number	Package Quantity
PLASTI-GRIP Butt Splice	0.5–1.6	34070	7
PLASTI-GRIP Ring Tongue; M3	0.5–1.6	34142	3
PLASTI-GRIP Ring Tongue; M5	0.5–1.6	130014	3
PLASTI-GRIP Ring Tongue; M2.6	0.5–1.6	165004	3
PLASTI-GRIP Wire Pin, short	0.5–1.6	165143	3
PLASTI-GRIP Wire Pin, long	0.5–1.6	165167	2
PLASTI-GRIP Butt Splice	1.0–2.6	34071	5
PLASTI-GRIP Ring Tongue; M5	1.0–2.6	130102	3
PLASTI-GRIP Spade; M4	1.0–2.6	34166	2
PLASTI-GRIP Wire Pin	1.0–2.6	165171-1	2
PLASTI-GRIP Ring Tongue; M6	1.0–2.6	165035	2
PLASTI-GRIP Ring Tongue; M8	1.0–2.6	160296	1
PLASTI-GRIP Spade; M5	2.7–6.6	165017	1
PLASTI-GRIP Wire Pin	2.7–6.6	165085	1
PE End Splice	1.5–6.6	328730	3
PIDG FASTON Receptacle; 6.3 x 0.8	0.5–1.6	9-160583-2	3
PIDG FASTON Receptacle; 6.3 x 0.8	1.0–2.6	9-160313-2	2
FASTON Receptacle insulated; 6.3 x 0.8	1.0–2.6	735159	2
FASTON Receptacle with tab; 6.3 x 0.8	1.0–2.6	9-160463-2	2
PIDG FASTON Receptacle; 6.3 x 0.8	2.7–6.6	160314-2	1
SUPER CHAMP Hand Tool	–	169060-8	1

Service Kit

Automotive Repair Kit
Part No. **165115-1**

Description	Wire Size (mm ²)	Stud Size	Part Number	Package Quantity
ELECTRO-TAP	1.0-2.5	–	735398	10
PIDG FASTON Receptacle	1.5-2.5	–	9-160313-2	25
PIDG FASTON Receptacle	4.0-6.0	–	160314-2	25
PLASTI-GRIP SHUR-PLUG	16-14	–	160215	25
SHUR-PLUG PIDG Receptacle	1.0-2.5	–	165400-1	25
PLASTI-GRIP Ring Tongue	16-14	M5	130102	25
PLASTI-GRIP Ring Tongue	16-14	M4	34160	25
SUPER CHAMP Mark II	–	–	169060-8	1
PIDG FASTON Piggy Back Receptacle	1.0-3.4	–	9-160463-2	25
PIDG FASTIN-FASTON Receptacle	16-12	–	735160	25
PLASTI-GRIP Ring Tongue	12-10	–	160292	25
PLASTI-GRIP Butt Connector	16-14	M5	34071	25
PLASTI-GRIP Butt Connector	12-10	–	34072	25
PLASTI-GRIP Ring Tongue	12-10	–	165035	25
PLASTI-GRIP Ring Tongue	12-10	M6	160296	25
Partition	–	–	131419-2	6
Large Case incl. 9 Plastic Boxes	–	–	132526-1	1

BANTAM ROTA-CRIMP Kit
Part No. **165347**

Description	Wire Size (mm ²)	Part Number	Package Quantity
Case	–	725794	1
BANTAM ROTA-CRIMP Tool	–	601075	1
SOLISTRAND Ring Tongue	8	33461	50
SOLISTRAND Ring Tongue	8	33462	50
SOLISTRAND Ring Tongue	6	33465	50
SOLISTRAND Ring Tongue	6	33466	50
SOLISTRAND Ring Tongue	4	33470	20
SOLISTRAND Ring Tongue	4	160075	20
SOLISTRAND Ring Tongue	2	322870	20
SOLISTRAND Ring Tongue	2	160002	20
SOLISTRAND Ring Tongue	1/10	160000	10
SOLISTRAND Ring Tongue	1/10	36919	10
SOLISTRAND Butt Splice	8	34321	10
SOLISTRAND Butt Splice	6	34322	10
SOLISTRAND Butt Splice	4	34323	10
SOLISTRAND Butt Splice	2	35189	10
SOLISTRAND Butt Splice	1/10	36957	10

Service Kit (continued)

PIDG Repair Kit
Part No. **165154-1**

Description	Wire Size (mm ²)	Stud Size	Part Number	Package Quantity
FASTON Receptacle	1.0-2.5	–	9-160313-2	50
Case	–	–	165135	1
Spade	2.7-6.6	M6	130625	50
Wire Pin	2.7-6.6	–	165049	50
Ring Tongue	1.0-2.6	M5	130094	50
Wire Pin	1.0-2.6	–	165046	50
Ring Tongue	2.7-6.6	M8	160298	50
Ring Tongue	1.0-2.6	M4	320565	50
Ring Tongue	2.7-6.6	M6	165034	50
Butt Splice	2.7-6.6	–	34072	50
Butt Splice	1.0-2.6	–	34071	50
Butt Splice	0.25-1.6	–	34070	50
Spade	0.25-1.6	M4	130517	50
Spade	1.0-2.6	M3.5	320861	50
Spade	1.0-2.6	M4	321233	50
Wire Pin	0.25-1.6	–	165142	50
Wire Pin	1.0-2.6	–	9-160402-2	50
Ring Tongue	0.25-1.6	M4	31890	50
Ring Tongue	0.25-1.6	M3.5	36150	50

PIDG Introduction Kit
Part No. **165346**

Description	Wire Size (mm ²)	Stud Size	Part Number	Package Quantity
Partition	–	–	131419-2	14
Case	–	–	132526-1	1
.250 SRS Line Splice Connector (white)	1.0-2.5	–	163179-1	5
.250 SRS PIDG FASTON Piggy Back Receptacle	1.0-2.5	–	9-160463-2	10
.250 SRS PIDG FASTON Receptacle	1.0-2.5	–	9-160313-2	10
PIDG Ring Tongue	2.7-6.6	1/4	165034	10
PIDG Ring Tongue	2.7-6.6	M5	130171	10
PIDG Ring Tongue	2.7-6.6	M4	35108	10
Flanged Spade	0.25-1.6	M4	320862	20
PIDG Ring Tongue	0.25-1.6	M5	130094	20
PIDG Ring Tongue	0.25-1.6	M4	320565	20
PIDG Ring Tongue	0.25-1.6	M3.5	320619	20
PIDG Spade	0.25-1.6	–	165142	20
PIDG Spade	1.00-2.6	M3.5	35559	20
PIDG Spade	0.25-1.6	M2.6	326861	20
PIDG Ring Tongue	0.25-1.6	M4	31890	20
PIDG Ring Tongue	0.25-1.6	M3.5	36150	20
PIDG Ring Tongue	0.25-1.6	M2.6	31880	20
PLASTI-GRIP Butt-Splice	2.7-6.6	–	34072	10
PLASTI-GRIP Butt-Splice	1.0-2.6	–	34071	15
PLASTI-GRIP Butt-Splice	0.25-1.6	–	34070	20

Service Kit

PLASTI-GRIP Repair Kit
Part No. **165153-1**

Description	Wire Size (mm ²)	Stud Size	Part Number	Package Quantity
Wire Pin	1.0–2.6	–	9-165075-0	50
Spade	2.7–6.6	M6	165019	50
Ring Tongue	2.7–6.6	M8	160296	50
Ring Tongue	2.7–6.6	M5	160292	50
Ring Tongue	1.0–2.6	M5	130102	50
Ring Tongue	1.0–2.6	M4	34160	50
Ring Tongue	2.7–6.6	M6	165035	50
Spade	0.25–1.6	M3.5	320665	50
Spade	0.25–1.6	M4	165008	50
Spade	1.0–2.6	M4	326741	50
Wire Pin	0.25–1.6	–	165143	50
PIDG FASTON Receptacle	1.0–2.5	–	9-160313-2	50
Case	–	–	165135	1
Wire Pin	2.7–6.6	–	165085	50
Ring Tongue	0.25–1.6	M4	34148	50
Ring Tongue	0.25–1.6	M3.5	34142	50
Butt Splice	2.7–6.6	–	34072	50
Butt Splice	1.0–2.6	–	34071	50
Butt Splice	0.25–1.6	–	34070	50

PLASTI-GRIP Repair Kit
Part No. **165430-1**

Description	Wire Size (mm ²)	Part Number	Package Quantity
Closed End Connectors Nylon	18–10	320730	50
PLASTI-GRIP Ring	12–10	165035	50
.250 Series PIDG FASTON Piggy Back Receptacle	1.0–2.5	9-160463-2	50
.250 Series PIDG FASTON Receptacle	1.5–2.5	9-160315-2	50
PLASTI-GRIP Ring	16–14	34162	50
PLASTI-GRIP Butt Splice	16–14	34071	50
PLASTI-GRIP Wire Pin	16–14	9-165171-0	50
PLASTI-GRIP Wire Pin	16–14	9-165075-0	50
PLASTI-GRIP Butt Splice	22–16	34070	50
PLASTI-GRIP Spade	16–14	326741	50
PLASTI-GRIP Ring	16–14	130102	50
PLASTI-GRIP Ring	16–14	34160	50
PLASTI-GRIP Wire Pin	22–16	165143	50
PLASTI-GRIP Spade	22–16	165008	50
PLASTI-GRIP Ring	22–16	34142	50
Partition	–	131419-2	8
Case	–	132526-1	1

Empty Box

Empty Box

Part No. **132526-1**

We offer this empty box made of durable plastic, which you can individually equip with Tyco Electronics products according to your specific needs. The box consists of one hand tool partition, ten standard partitions and one double partition. For placing additional products in the box you can order dividers separately.

Either four dividers with Size I, or two dividers with Size II will fit in a standard partition.

Box Color:

Gray

Box Size:

300 x 250 x 35 mm

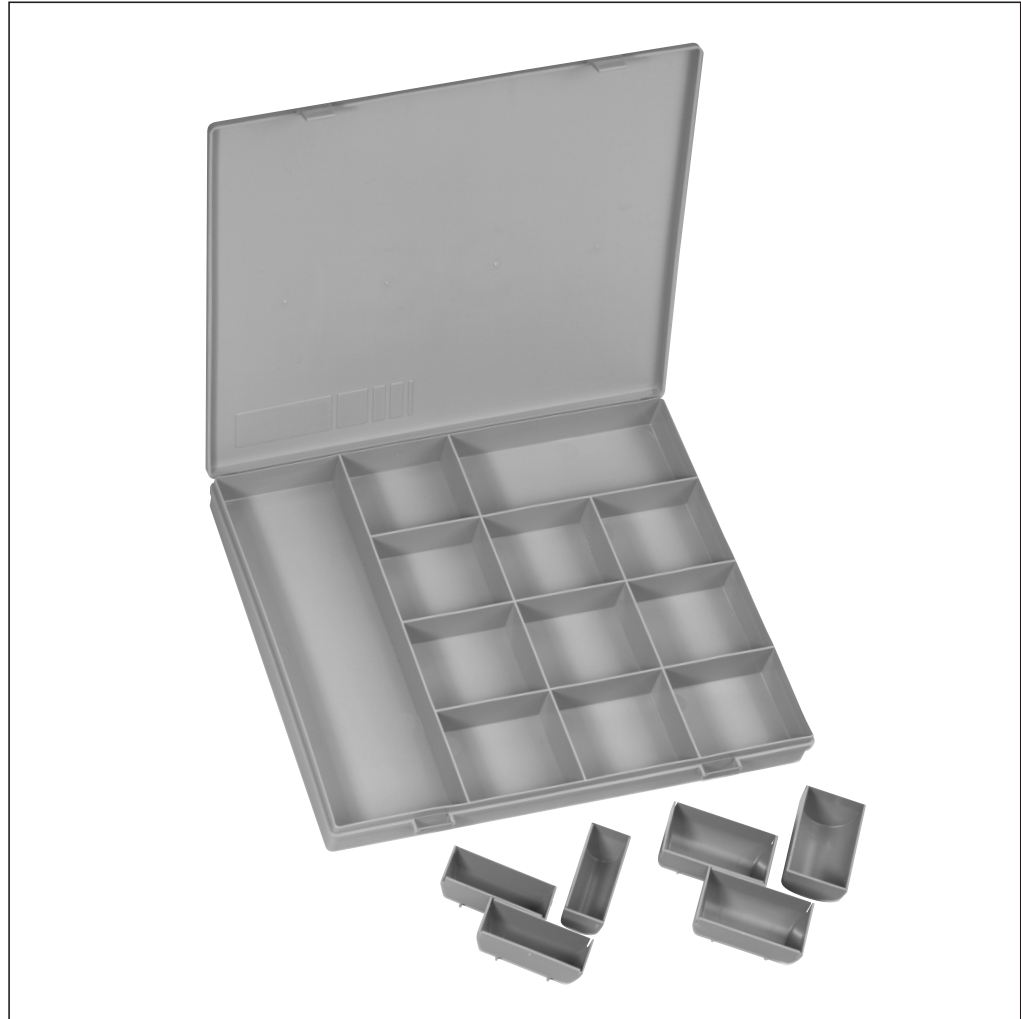
Partition Divider

Size I: 60 x 22 mm

Part No. **131419-1**

Size II: 60 x 35 mm

Part No. **131419-2**



Engineering Notes

A large grid area for writing engineering notes, consisting of a uniform grid of small squares. The grid is empty and occupies the majority of the page's vertical space.