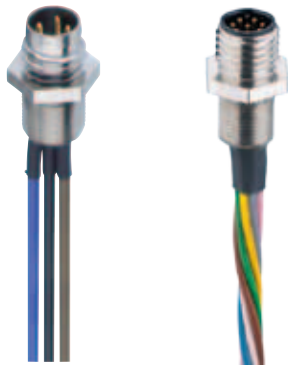


## M8-Receptacle Connectors In Accordance With IEC 61076-2-104

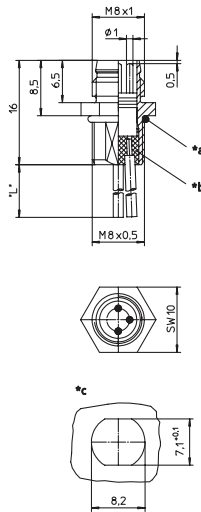
### RSMF/0.5 M | RKMf/0.5 M



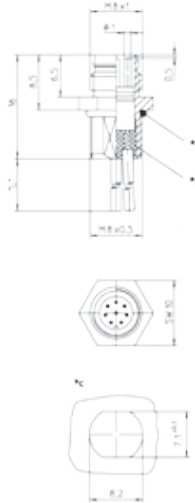
### Male, 3-, 4-, and 8-Pole

Receptacle connector, M8 male connector for front mounting, assembled stranded wire, solder contacts potted with epoxy, chassis side thread M8 x 0.5 (panel nut RSKF 8).

### RSMF 3/0.5 M



### RSMF 8/0.5 M



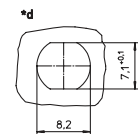
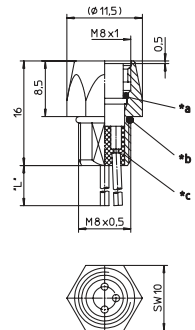
\*a O-ring enclosed separately  
 \*b solder contacts potted with epoxy  
 \*c cut out  
 \*L\* 0.5 m



### Female, 3-, 4-, and 8-Pole

Receptacle connector, M8 female connector for front mounting, assembled stranded wire, solder contacts potted with epoxy, chassis side thread M8 x 0.5 (panel nut RSKF 8).

### RKMf/0.5 M

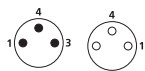


\*a O-Ring  
 \*b O-ring enclosed separately  
 \*c solder contacts potted with epoxy  
 \*d cut out  
 \*L\* 0.5 m

### Pin Assignments

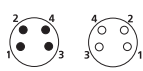
#### Face Views

#### M8 - 3 poles



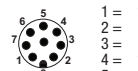
1 = brown  
 2 = blue  
 4 = black

#### M8 - 4 poles



1 = brown  
 2 = white  
 3 = blue  
 4 = black

#### M8 - 8 poles



1 = white  
 2 = brown  
 3 = green  
 4 = yellow  
 5 = grey  
 6 = pink  
 7 = blue  
 8 = red



Be Certain with Belden

**M8-Receptacle Connectors In Accordance With IEC 61076-2-104**  
 RSMF/0.5 M | RKMF/0.5 M

**Technical Data**

**Environmental**

Degree of protection IP 67 / NEMA 6P  
 Operating temperature range -25°C (-13°F) / +80°C (+176°F)

**Mechanical**

Housing / Molded body CuZn, nickel-plated  
 Insert PA  
 Contact CuZn, pre-nickeled and 0.8 microns gold-plated  
 O-ring FKM

**Electrical**

Contact resistance RSMF: ≤ 5 mΩ  
 Nominal current at 40°C RSMF 8: 1 A  
 RSMF: 4 A  
 Nominal voltage 60 V  
 RSMF 8: 32 V  
 Test voltage 1.5 kV eff. / 60 s  
 RSMF 8: 0.8 kV eff. / 60 s  
 Insulation resistance > 10<sup>9</sup> Ω  
 Pollution degree 3

Part Number		Pins	Characteristics
RSMF 3/0,5 M	RKMF 3/0,5 M	3	 
RSMF 4/0,5 M	RKMF 4/0,5 M	4	 
RSMF 8/0,5 M		8	 

Receptacles

# Mouser Electronics

Authorized Distributor

Click to View Pricing, Inventory, Delivery & Lifecycle Information:

[Lumberg Automation:](#)

[RSMF 3/0.5 M](#) [RSMF 8/0.5 M](#) [RSMF 4/0.5 M](#)