

IEC Appliance Inlet C14 with Filter, Fuseholder 1- or 2-pole (5x20 mm or 6.3x32 mm), Line Switch 1- or 2-pole, Voltage Selector (Step)

Standard- or Medical-Filter



V-Lock



Description

- Panel Mount:
Screw-on mounting from front side
- 5 Functions:
Appliance Inlet, Line Switch, Fuseholder with interchangeable fuse drawer for Fuse-links 5x20 mm or 6.3x32 mm, with or without voltage selector (step switch), Line filter in standard and medical version
- Quick connect terminals 4.8 x 0.8 mm

Approvals

- VDE Certificate Number: 40004665 (FKSO, FKSP, FKSU, FKSU)
- UL File Number: E72928 (FKSO, FKSP, FKSU, FKSU)

Characteristics

- All single elements are already wired
- The fuse drawer "Fingergrasp" can be removed by hand
- Suitable for use in equipment according to IEC/UL 60950
- Suitable for use in medical equipment according to IEC/UL 60601-1

References

Alternative: version without line filter [KD](#)
Alternative: Standard version

Weblinks

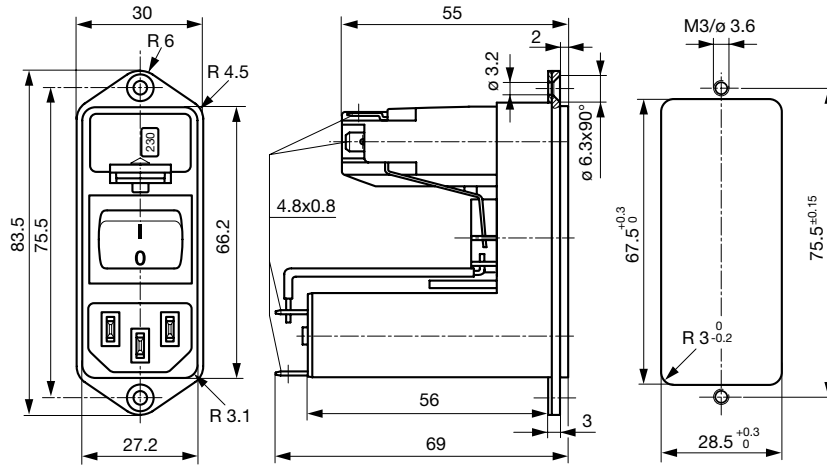
[pdf-datasheet](#), [html-datasheet](#), [General Product Information](#), [RoHS](#), [CHINA-RoHS](#), [REACH](#), [Mating Connectors](#), [e-Shop](#), [SCHURTER-Stock-Check](#), [Distributor-Stock-Check](#), [Accessories](#), [Wire Harnessing](#)

Newly available variants corresponding to V-Lock mating cordset. The connector is equipped with a notch intended for use with the latching cordset. The cord latching system prevents against accidental removal of the cordset.

Technical Data

| | | | |
|---------------------------|--|-----------------------------------|--|
| Ratings IEC | 1 - 10A @ Ta 40 °C / 250VAC; 50Hz | Appliance-Inlet/-Outlet | C14 acc. to IEC 60320, UL 498, CSA C22.2 no. 42 (for cold conditions) pin-temperature 70 °C, 10A, Protection Class I |
| Ratings UL/CSA | 1 - 10A @ Ta 40 °C / 125VAC; 60Hz | Fuseholder | 1 or 2 pole, Shocksafe category PC2 acc. to IEC 60127-6, for fuse-links 5 x 20 or 6.3 x 32mm |
| Leakage Current | standard < 0.5mA (250V / 60Hz) medical < 5 µA (250 V / 60 Hz) | Rated Power Acceptance @ Ta 23 °C | 5 x 20: 2.5W (1 pole)/ 2W (2-pole) per pole 6.3 x 32: 3.15W (1 pole)/ 2.5W (2-pole) per pole |
| Dielectric Strength | > 1.7kVDC between L-N > 2.7kVDC between L/N-PE Test voltage (2sec) | Power Acceptance @ Ta > 23°C | Admissible power acceptance at higher ambient temperature see derating curves |
| Allowable Operation Temp. | -25 °C to 85 °C | Line Switch | 2-pole, non-illuminated, acc. to IEC 61058-1 Technical Details |
| Climatic Category | 25/085/21 acc. to IEC 60068-1 | Voltage Selector | optional, step, 2-4 digits |
| Degree of Protection | from front side IP 40 acc. to IEC 60529 | Line Filter | Standard and Medical Version, IEC 60939, UL 1283, CSA C22.2 no. 8 Technical Details |
| Protection Class | Suitable for appliances with protection class I acc. to IEC 61140 | MTBF | > 1'200'000h acc. to MIL-HB-217 F |
| Terminal | Quick connect terminals 4.8 x 0.8 mm | | |
| Panel Thickness s | Screw: max 8 mm Mounting screw torque max 0.5Nm | | |
| Material: Housing | Thermoplastic, black, UL 94V-0 | | |

Dimension
CD

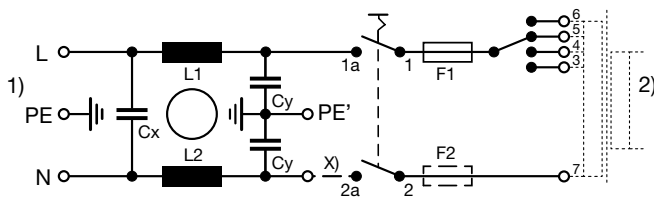


Technical Data of Filter-Components

| Rated Current [A] | Filter-Type | Inductances L [mH] | Capacitance CX [nF] | Capacitance CY [nF] | R [MΩ] |
|-------------------|----------------------|--------------------|---------------------|---------------------|--------|
| 1 | Standard Version | 2 x 10 | 68 | 2.2 | - |
| 2 | Standard Version | 2 x 4 | 68 | 2.2 | - |
| 4 | Standard Version | 2 x 1.5 | 68 | 2.2 | - |
| 6 | Standard Version | 2 x 0.8 | 68 | 2.2 | - |
| 10 | Standard Version | 2 x 0.3 | 68 | 2.2 | - |
| 1 | Medical Version (M5) | 2 x 10 | 68 | - | 1 |
| 2 | Medical Version (M5) | 2 x 4 | 68 | - | 1 |
| 4 | Medical Version (M5) | 2 x 1.5 | 68 | - | 1 |
| 6 | Medical Version (M5) | 2 x 0.8 | 68 | - | 1 |
| 10 | Medical Version (M5) | 2 x 0.3 | 68 | - | 1 |
| 2 | Medical (M80) | 2 x 4 | 68 | 0.47 | 1 |
| 4 | Medical (M80) | 2 x 1.5 | 68 | 0.47 | 1 |
| 10 | Medical (M80) | 2 x 0.3 | 68 | 0.47 | 1 |

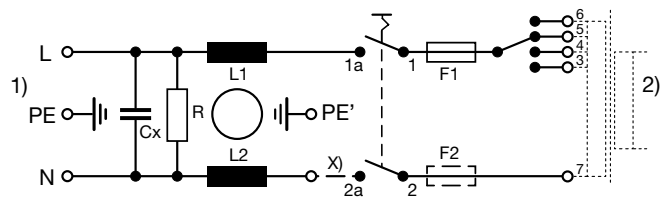
Diagrams

Standard version with voltage selector



- 1) Line
- 2) Load
- x) External connection to be made by the customer

Medical version with voltage selector

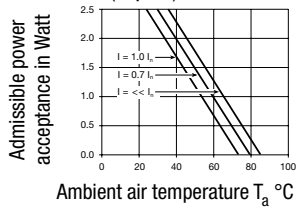


- 1) Line
- 2) Load
- x) External connection to be made by the customer

Derating Curves

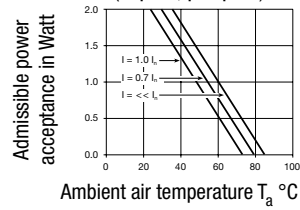
Fuses

5 x 20 mm (1-pole)



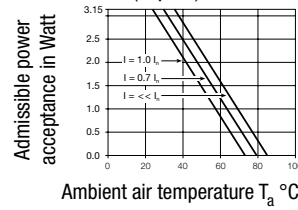
Fuses

5 x 20 mm (2-pole, per pole)



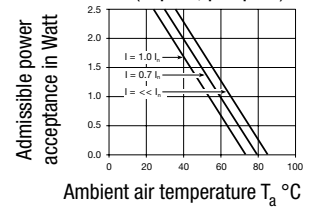
Fuses

6.3 x 32 mm (1-pole)



Fuses

6.3 x 32 mm (2-pole, per pole)

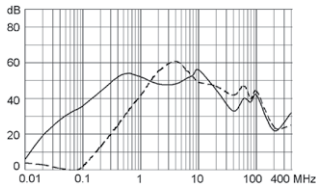


Attenuation Loss

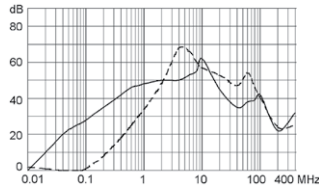
--- differential mode ____ common mode

Standard version

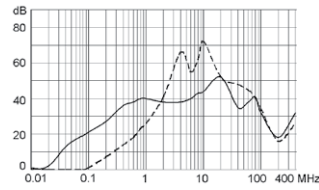
1 A



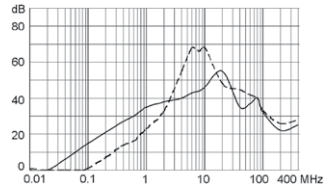
2 A



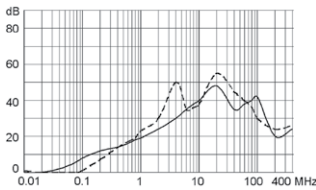
4 A



6 A

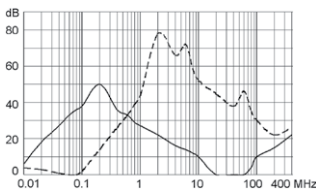


10 A

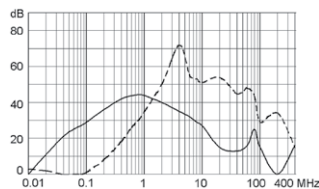


Medical version (M5)

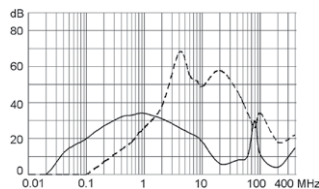
1 A



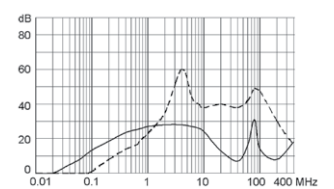
2 A



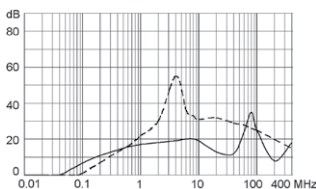
4 A



6 A



10 A



All Variants

| Type | Rated Current [A] | Filter-Type | Fuseholder | Line Switch | Voltage Selector | Order Number | |
|------|-------------------|----------------------|------------|-------------|------------------|------------------|---|
| CD | 1 | Standard Version | 1-pole | 2-pole | - | CD11.1501.151 | ■ |
| CD | 2 | Standard Version | 1-pole | 2-pole | - | CD21.1501.151 | ■ |
| CD | 4 | Standard Version | 1-pole | 2-pole | - | CD31.1501.151 | |
| CD | 6 | Standard Version | 1-pole | 2-pole | - | CD41.1501.151 | |
| CD | 10 | Standard Version | 1-pole | 2-pole | - | CD61.1501.151 | |
| CD | 1 | Standard Version | 1-pole | 2-pole | 2-4 digits | CD11.4501.151 | |
| CD | 2 | Standard Version | 1-pole | 2-pole | 2-4 digits | CD21.4501.151 | |
| CD | 4 | Standard Version | 1-pole | 2-pole | 2-4 digits | CD31.4501.151 | ■ |
| CD | 6 | Standard Version | 1-pole | 2-pole | 2-4 digits | CD41.4501.151 | |
| CD | 10 | Standard Version | 1-pole | 2-pole | 2-4 digits | CD61.4501.151 | |
| CD | 1 | Standard Version | 2-pole | 2-pole | - | CD14.1101.151 | ■ |
| CD | 2 | Standard Version | 2-pole | 2-pole | - | CD24.1101.151 | ■ |
| CD | 4 | Standard Version | 2-pole | 2-pole | - | CD34.1101.151 | ■ |
| CD | 6 | Standard Version | 2-pole | 2-pole | - | CD44.1101.151 | ■ |
| CD | 10 | Standard Version | 2-pole | 2-pole | - | CD64.1101.151 | ■ |
| CD | 1 | Standard Version | 2-pole | 2-pole | 2-4 digits | CD14.4101.151 | ■ |
| CD | 2 | Standard Version | 2-pole | 2-pole | 2-4 digits | CD24.4101.151 | ■ |
| CD | 4 | Standard Version | 2-pole | 2-pole | 2-4 digits | CD34.4101.151 | ■ |
| CD | 6 | Standard Version | 2-pole | 2-pole | 2-4 digits | CD44.4101.151 | ■ |
| CD | 10 | Standard Version | 2-pole | 2-pole | 2-4 digits | CD64.4101.151 | |
| CD | 6 | Medical Version (M5) | 2-pole | 2-pole | - | CDE4.1101.151 | ■ |
| CD | 1 | Medical Version (M5) | 2-pole | 2-pole | 2-4 digits | CDG4.4101.151 | |
| CD | 2 | Medical Version (M5) | 2-pole | 2-pole | 2-4 digits | CDA4.4101.151 | ■ |
| CD | 4 | Medical Version (M5) | 2-pole | 2-pole | 2-4 digits | CDC4.4101.151 | ■ |
| CD | 6 | Medical Version (M5) | 2-pole | 2-pole | 2-4 digits | CDE4.4101.151 | ■ |
| CD | 6 | Medical Version (M5) | 2-pole | 2-pole | 2-4 digits | CDE4.4101.151.21 | |
| CD | 10 | Medical Version (M5) | 2-pole | 2-pole | 2-4 digits | CDL4.4101.151 | ■ |
| CD | 2 | Medical (M80) | 2-pole | 2-pole | 2-4 digits | CDB4.4101.151 | |
| CD | 4 | Medical (M80) | 2-pole | 2-pole | 2-4 digits | CDD4.4101.151 | |
| CD | 10 | Medical (M80) | 2-pole | 2-pole | 2-4 digits | CDM4.4101.151 | |
| CD | 10 | Medical (M80) | 2-pole | 2-pole | 2-4 digits | CDM4.4101.151.21 | |

■ Most Popular.

Availability for all products can be searched real-time: <http://www.schurter.com/en/Stock-Check/Stock-Check-SCHURTER>

Suffix ".21" corresponds to the version with V-Lock mating cordset. The connector is equipped with a notch intended for use with the latching cordset. The cord latching system prevents against accidental removal of the cordset.

Packaging unit 10 Pcs

Required Accessory

Description

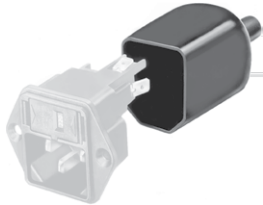


Fusedrawer 3
Fusedrawer for Fuse Links 5x20 mm resp. 6.3x32 mm

Accessories



Wire Harness
Wire harness for SCHURTER products



Assorted Covers
Rear Cover



Cord retaining kits
Cord retaining strain relief

Mating Outlets/Connectors

Category / Description

Appliance Outlet Overview complete



| | |
|---|------|
| IEC Appliance Outlet F, Screw-on Mounting, Front Side, Solder Terminal | 4787 |
| IEC Appliance Outlet F, Snap-in Mounting, Front Side, Solder or Quick-connect Terminal | 4788 |
| IEC Appliance Outlet F or H, Screw-on Mounting, Front Side, Solder, PCB or Quick-connect Terminal | 5091 |

Appliance Outlet further types to CD

Connector Overview complete



| | |
|---|---------|
| IEC Connector C13, Rewireable, Straight | 4782 |
| IEC Connector C13, Rewireable, Straight | 4022 |
| IEC Connector C13, Rewireable, Angled | 4785 |
| IEC Connector C13, Rewireable, Angled | 4300-06 |
| IEC Connector C13, Rewireable, Angled | 4012 |

Connector further types to CD

Mating Outlets/Connectors shuttered

Power Cord Overview complete



| | |
|---|---------|
| Overview Power Supply Cord with IEC Connector C13, V-Lock, straight | VAC13KS |
|---|---------|

Power Cord further types to CD