

## BOS

BOS 752 with continuous membrane keypad area and compartment for 9V block battery



BOS 752

Order no.: 34752000

\* = Available on request.

### Characteristics

Colour of enclosure group

Black, similar to RAL 9005

Colour of enclosure group

Black

Protection class

IP 40

Enclosure Material

ABS, seal made of CR; for details see Technical Information

Scope of delivery

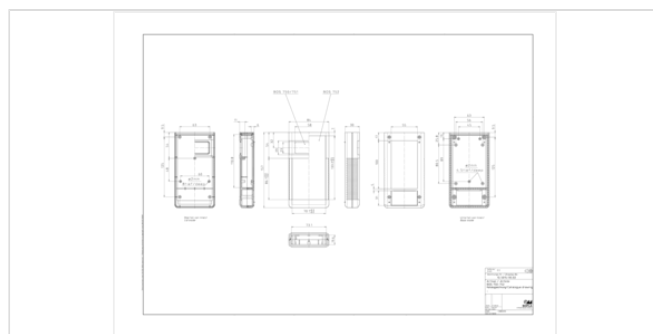
Lid, base, front panel, battery compartment lid, screws

### Dimensions

Dimensions

157 x 84 x 30 mm

Product drawing



### Important!

To compensate for pressure when temperatures change and cause moisture in the enclosure, we recommend that you use a pressure compensation element.

» Additional information

### Technical documentation / Downloads

#### Technical drawings

3D product data in STEP format: Registration necessary

Product drawing in PDF format: 34752000 BOS-752.pdf (67.4 KB)

Product drawing in DXF format: 34752000 BOS-752.dxf (763.0 KB)

Drawing for mechanical processing: 34752000 BOS-752-G.dxf (621.3 KB)

Milling contours are shown here as a DXF file. (Sub D, USB, HDMI, cable glands, ...)

20.09.2019

#### Product information

BOS GB.pdf (746.5 KB)

## Matching accessories

---



Universal clip and tip-up clip

34090000 ASC 1

Black, similar to RAL 9005



Screws (SHR) and distance bolts (DIBLZ) for mounting bosses in plastic enclosures

59006190 SHR Z KA25x6

SD = 2.5 / ND = 2.0 / KD = 4.4

Membrane keypad for BOS 750-760, with 16 keys

70347516\* FT 75016 D

Membrane keypad for BOS 750-760, with 20 keys

70347520\* FT 75020 D