

4

3

2

1

D

D

C

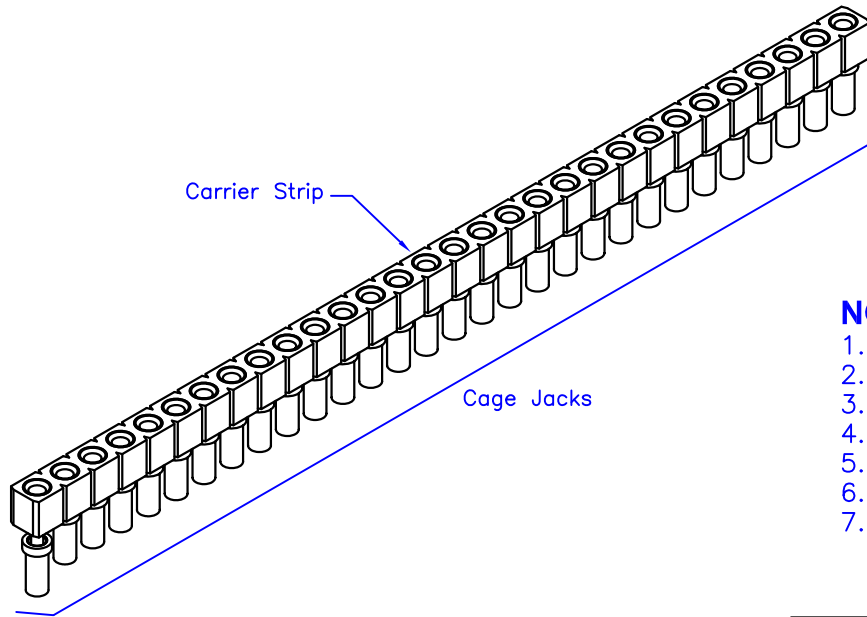
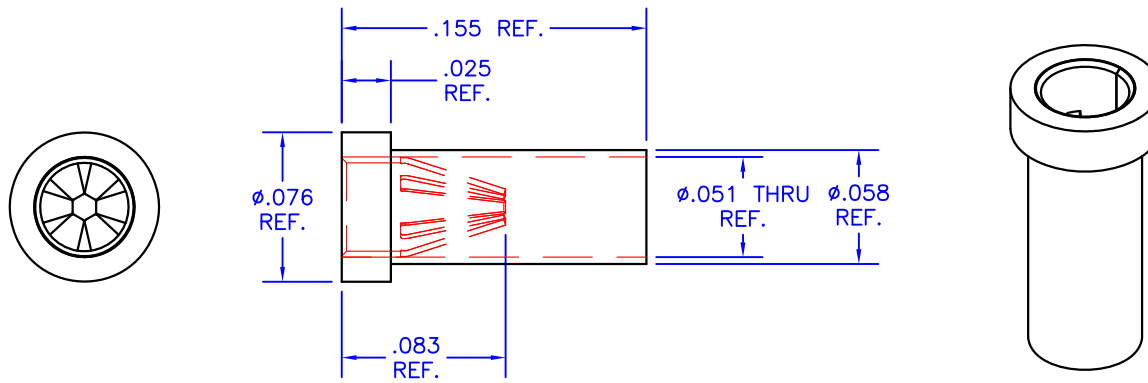
C

B

B

A

A



NOTES:

1. Unless otherwise noted, dimensions are in inches.
2. Shell: 360 brass, half-hard, with 200 μ m tin/lead over nickel
3. Contacts: Beryllium copper with 10 μ m gold over nickel
4. Current rating: 4.5 amps, for 10°C temperature rise.
5. Solder mount in minimum .059/.061 diameter mounting hole.
6. Mill-Max Part No. 0305-2-15-01-47-27-10-0
7. This receptacle is supplied on a 30-position carrier strip as Mill-Max part number S703-93-130-47-052100.

TOLERANCES - UNLESS OTHERWISE SPECIFIED
 .XX = ± 0.01 [.254]
 .XXX = ± 0.005 [.127]
 ANG. = $\pm 5^\circ$



TITLE: **PIN RECEPTACLE FOR .025-.037 DIAMETER PINS**
 SUBJECT: **MECHANICAL DRAWING**
 ENGINEER: **D-M** DRAWN BY: **R.MOR** DCA: **13242** SHL **1** OF **1**

MODEL: **MS11**
 FILENAME: **MS11** REV: **E** DATE: **03JUN13**

4

3

2

1

Mouser Electronics

Authorized Distributor

Click to View Pricing, Inventory, Delivery & Lifecycle Information:

[Apex Microtechnology:](#)

[MS11](#)