

LOW FREQUENCY REFLOWABLE CYLINDRICAL WATCH CRYSTAL



6.0 x ϕ 1.9mm

AB26TRB

Pb in high temperature solder
(exempt 7(a) per 2015/863/EU Annex)

RoHS
Compliant

FEATURES:

- Formed leads for low cost SMD type
- Excellent shock resistance
- Reflow Capable
- Low cost for consumer applications
- IR reflow capable

APPLICATIONS:

- Real time clock
- Measuring instruments
- Blue-tooth and wireless applications

STANDARD SPECIFICATIONS:

| Parameters | Minimum | Typical | Maximum | Units | Notes |
|-----------------------------------|---------|-------------------|---------|---------------------|-------------------------------|
| Center Frequency | | 32.768 | | kHz | |
| Operating Temperature | -40 | | +85 | °C | |
| Turnover Temperature | +20 | +25 | +30 | °C | |
| Storage Temperature | -55 | | +125 | °C | |
| Frequency Tolerance @+25°C | -20 | | +20 | ppm | See options |
| Frequency Coefficient (β) | | -0.035 \pm 0.01 | | ppm/°C ² | |
| Equivalent series resistance (R1) | | 35 | 50 | k Ω | @25°C |
| Shunt capacitance (C0) | | 1.35 | | pF | |
| Load capacitance (CL) | | 12.5 | | pF | See options |
| Drive Level | | | 1 | μ W | |
| Quality Factor | | 70,000 | | | |
| Aging | -3 | | +3 | ppm | @25°C \pm 3°C First year |
| Insulation Resistance | 500 | | | M Ω | @ 100Vdc \pm 15V |

OPTIONS & PART IDENTIFICATION: (Left blank if standard)

AB26TRB-32.768kHz - - -

| Load Capacitance (pF) |
|-----------------------|
| Blank: 12.5pF |
| 6: 6pF |
| 10: 10pF |

| Freq. Tolerance |
|---------------------|
| Blank: \pm 20 ppm |
| 1: \pm 10 ppm |
| 7: \pm 15 ppm |

| Packaging |
|----------------|
| Blank: Bulk |
| T: Tape & Reel |

LOW FREQUENCY REFLOWABLE CYLINDRICAL WATCH CRYSTAL



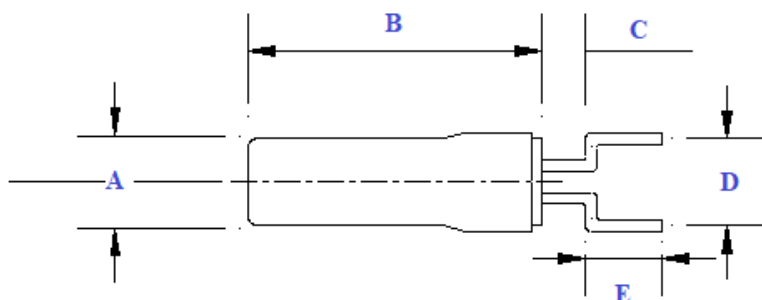
6.0 x ϕ 1.9mm

AB26TRB

Pb in high temperature solder
(exempt 7(a) per 2015/863/EU Annex)

RoHS
Compliant

OUTLINE DIMENSIONS:

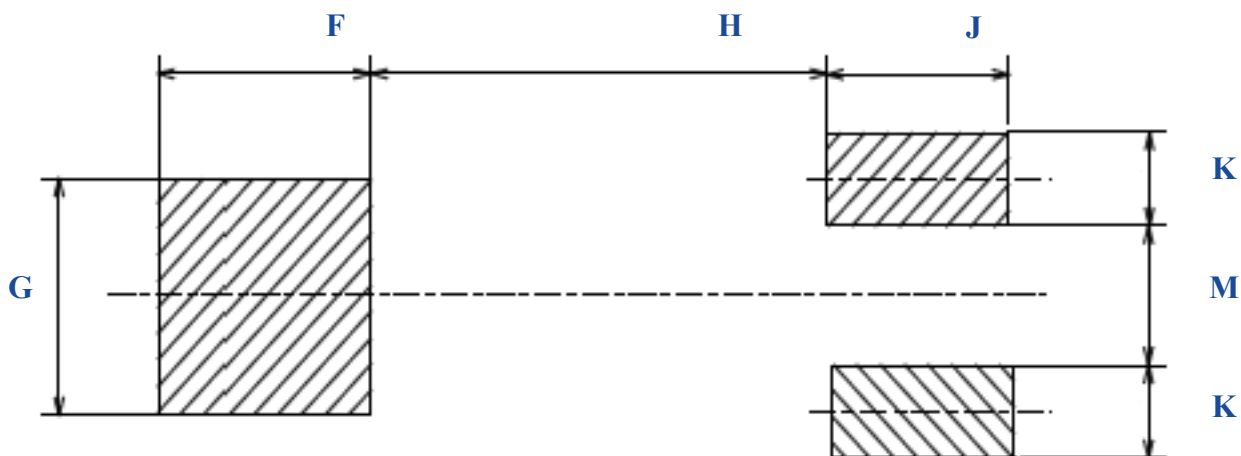


| Dimension Table | |
|-----------------|-------------------------|
| A | $\text{Ø } 1.9 \pm 0.1$ |
| B | 6.0 ± 0.2 |
| C | 1.0 |
| D | 2.54 ± 0.3 |
| E | 2.0 ± 0.3 |

NOTE:

The body/can of the component is not to be soldered. To do so may cause damage to the crystal.

Use Adhesive/Bonding Materials (i.e. Rubber Adhesive, Epoxy, etc) to affix the component body to the PCB.



| F | G | H | J | K | M |
|-----|-----|------|-----|-----|-----|
| 2.5 | 2.5 | 5.25 | 2.5 | 1.0 | 1.5 |

Dimensions: mm

LOW FREQUENCY REFLOWABLE CYLINDRICAL WATCH CRYSTAL



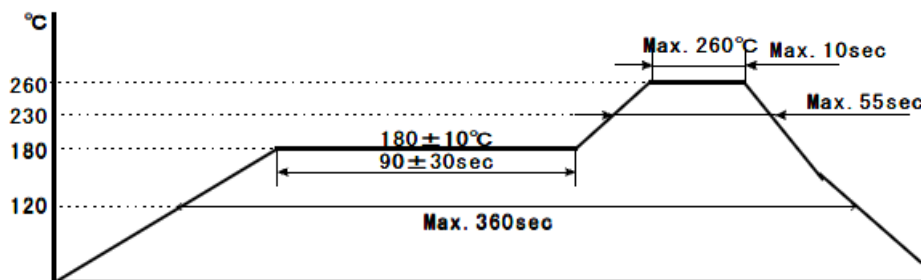
6.0 x ϕ 1.9mm

AB26TRB

Pb in high temperature solder
(exempt 7(a) per 2015/863/EU Annex)

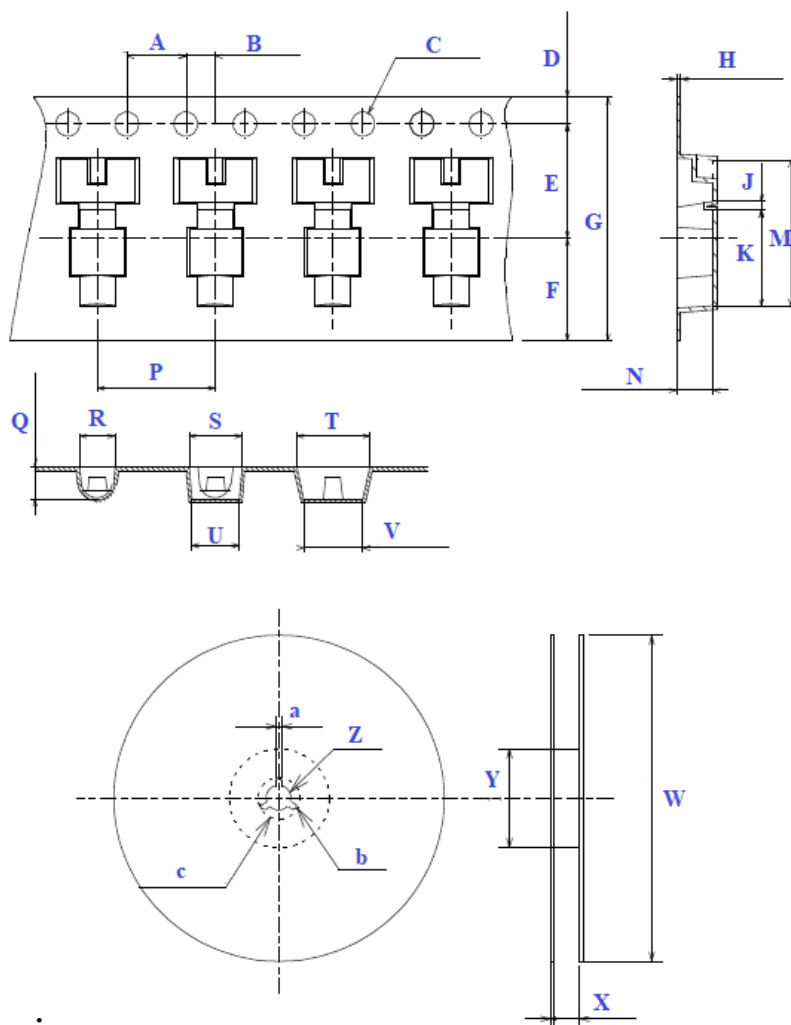
RoHS
Compliant

REFLOW PROFILE:



TAPE & REEL:

Packaging: 2000pcs/reel



Dimensions: mm

Dimension Table

| | |
|---|-------------|
| A | 4.0 ± 0.1 |
| B | 2.0 ± 0.1 |
| C | Ø 1.5 ± 0.1 |
| D | 1.75 ± 0.1 |
| E | 7.5 ± 0.1 |
| F | (6.75) |
| H | 0.3 ± 0.05 |
| G | 16 ± 0.3 |
| J | 0.6 |
| K | 6.3 ± 0.1 |
| M | 9.4 |
| N | 2.15 ± 0.1 |
| P | 8.0 ± 0.1 |
| Q | 2.15 ± 0.1 |
| R | 2.05 |
| S | 3.6 |
| T | 5.0 |
| U | 3.2 |
| V | 4.0 ± 0.1 |
| W | Ø 330 |
| X | 19.5 |
| Y | Ø 100 |
| Z | Ø 13 |
| a | 2.0 |
| b | R1.0 |
| c | Ø 21 ± 0.8 |

ATTENTION: Abracon LLC's products are COTS – Commercial-Off-The-Shelf products; suitable for Commercial, Industrial and, where designated, Automotive Applications. Abracon's products are not specifically designed for Military, Aviation, Aerospace, Life-dependent Medical applications or any application requiring high reliability where component failure could result in loss of life and/or property. For applications requiring high reliability and/or presenting an extreme operating environment, written consent and authorization from Abracon LLC is required. Please contact Abracon LLC for more information.