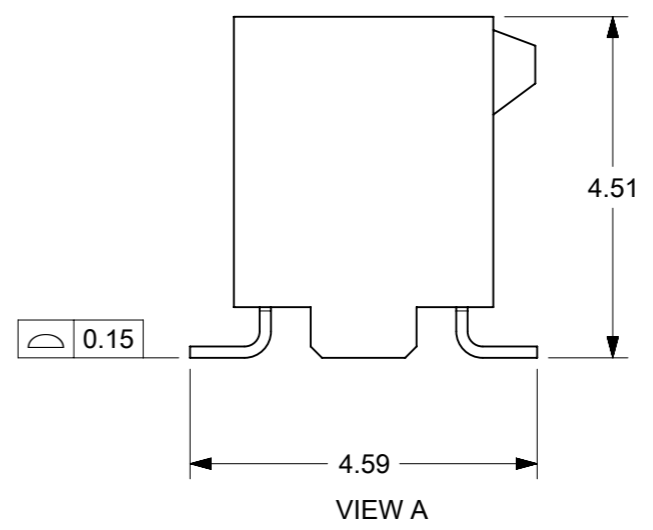
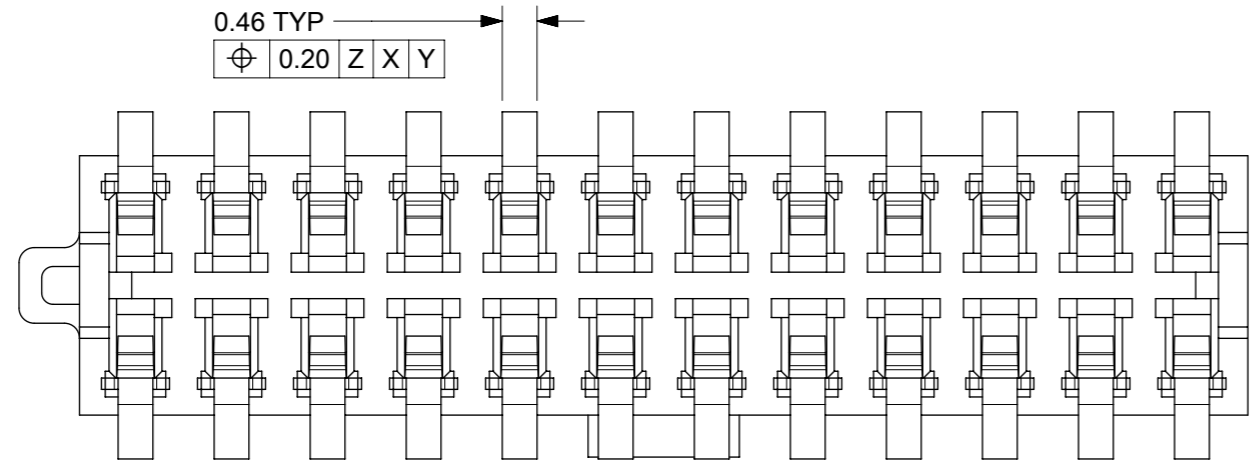
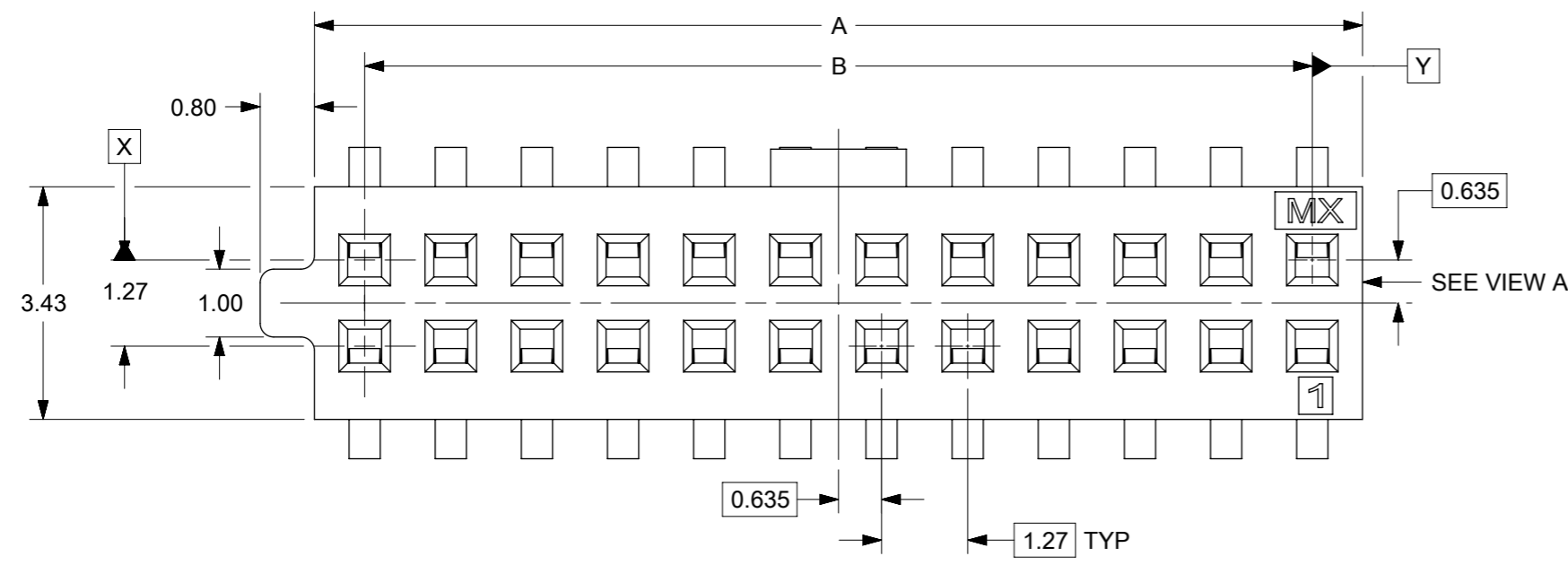
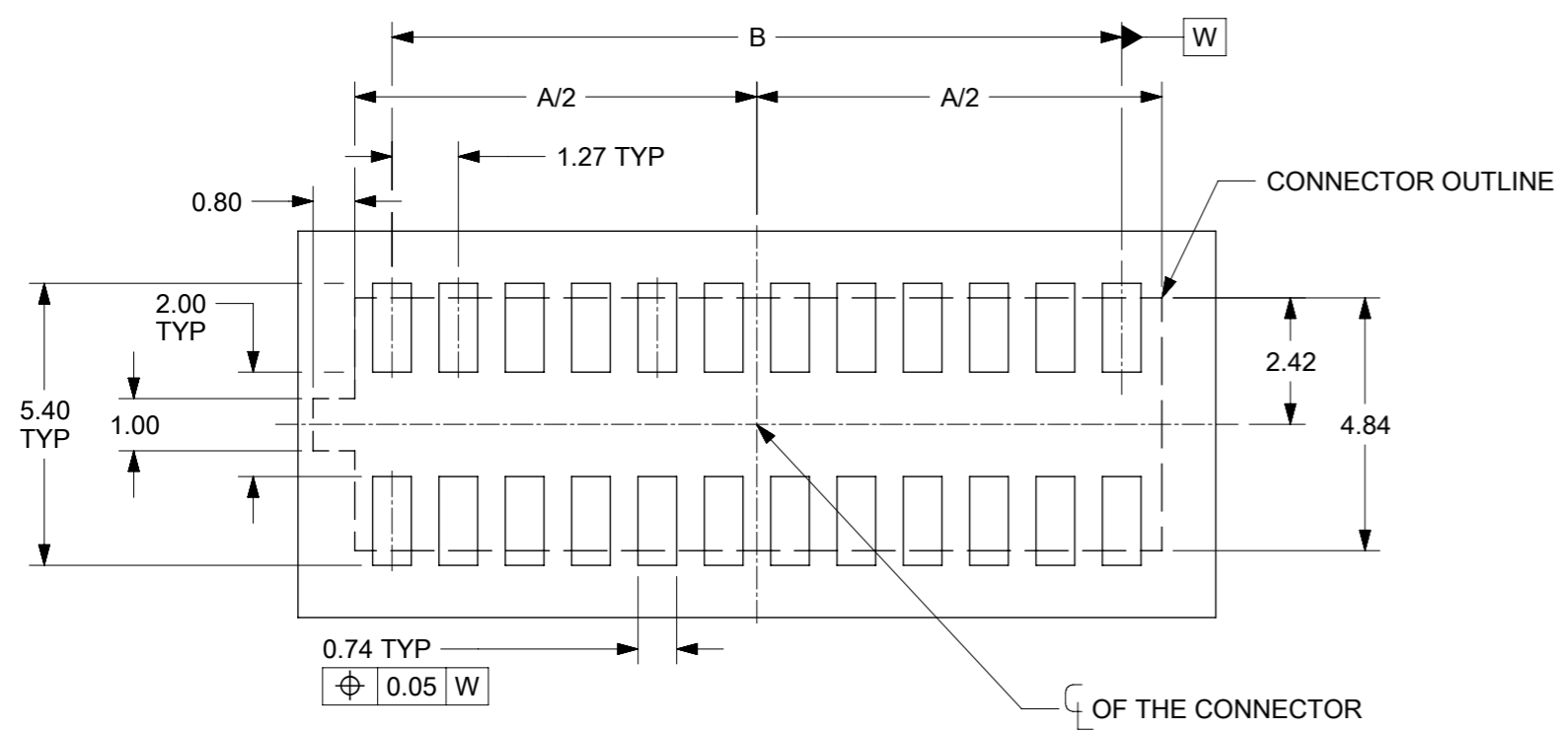


1. MATERIAL:
HOUSING: LIQUID CRYSTALLINE POLYMER, GLASS FILLED, UL94V-0, BLACK
TERMINAL: HIGH PERFORMANCE COPPER ALLOY
FINISHES: SEE PART NUMBER LEGEND IN SHEET 2
2. PRODUCT SPECIFICATION: 781200001_PS
3. PACKAGING SPECIFICATION: 781200001_PK
4. MATES WITH: 87933, 200989, 201021, 201022, 201173
5. PARTS CONFORMS TO CLASS "B" REQUIREMENT OF COSMETIC SPECIFICATION PS-45499-002
6. MOLEX LOGO AND CAVITY LOCATED AS SHOWN.
7. NON-FUNCTIONAL CORING IS SUBJECTED TO CHANGES WITHOUT NOTICE.
8. THE ABOVE 24 CKT SHOWN IS FOR ILLUSTRATION ONLY.



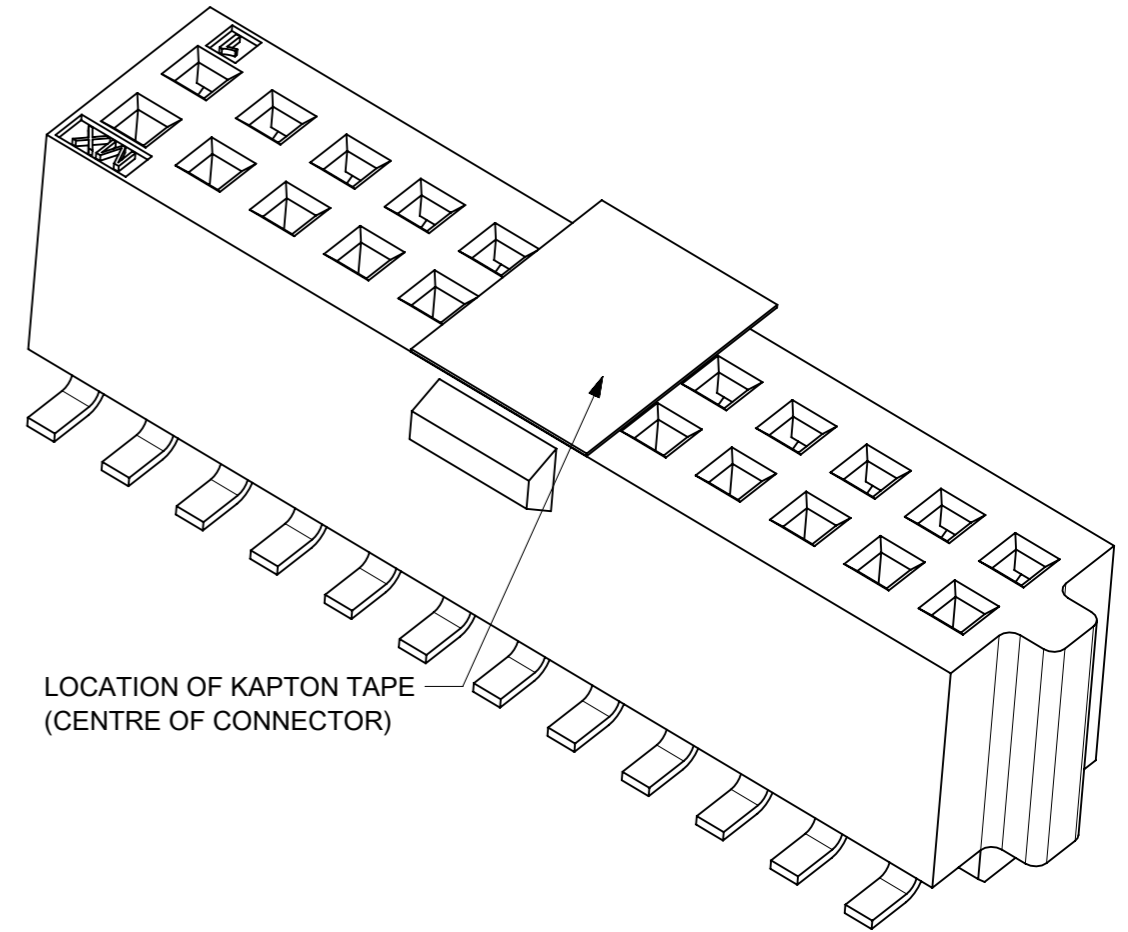
| CKT SIZE | DIMENSION | |
|----------|-----------|-------|
| | A | B |
| 4 | 2.75 | 1.27 |
| 6 | 4.02 | 2.54 |
| 8 | 5.29 | 3.81 |
| 10 | 6.56 | 5.08 |
| 12 | 7.83 | 6.35 |
| 14 | 9.10 | 7.62 |
| 16 | 10.37 | 8.89 |
| 18 | 11.64 | 10.16 |
| 20 | 12.91 | 11.43 |
| 22 | 14.18 | 12.70 |
| 24 | 15.45 | 13.97 |



RECOMMENDED PCB LAYOUT
TOLERANCE ± 0.05
(24 CKT SHOWN IS FOR ILLUSTRATION ONLY)

| | | | | | |
|---|-----------------|---------------------|-----------------|---|--------------|
| THIS DRAWING CONTAINS INFORMATION THAT IS PROPRIETARY TO MOLEX ELECTRONIC TECHNOLOGIES, LLC AND SHOULD NOT BE USED WITHOUT WRITTEN PERMISSION | | CURRENT REV DESC: | | molex | |
| DIMENSION UNITS | SCALE | | | | |
| MM | NTS | | | 1.27MM PITCH SLIM-GRID VERTICAL SMT RECEPTACLE | |
| GENERAL TOLERANCES (UNLESS SPECIFIED) | | | | PRODUCT CUSTOMER DRAWING | |
| ANGULAR TOL | $\pm 3.0^\circ$ | | | DOCUMENT NUMBER | |
| 4 PLACES | \pm | EC NO: 672044 | 2021/07/26 | 781200001 | |
| 3 PLACES | \pm | DRWN: ABABUPS | 2021/07/30 | DOC TYPE | DOC PART |
| 2 PLACES | ± 0.2 | CHK'D: MRAMAKRISHNA | 2021/07/30 | PSD | 000 |
| 1 PLACE | \pm | APPR: MRAMAKRISHNA | 2021/07/30 | A3 | |
| 0 PLACES | \pm | INITIAL REVISION: | | REVISION | |
| DRAFT WHERE APPLICABLE MUST REMAIN WITHIN DIMENSIONS | | DRWN: SCHEONG | 2016/02/21 | | |
| THIRD ANGLE PROJECTION | | APPR: KHLIM | 2016/07/18 | | |
| DRAWING | | SERIES | MATERIAL NUMBER | CUSTOMER | SHEET NUMBER |
| A3-SIZE | | 78120 | SEE TABLE | GENERAL MARKET | 1 OF 3 |

| CKT SIZE | ASSEMBLY P/N WITHOUT KAPTON TAPE IN TUBE | ASSEMBLY P/N WITH KAPTON TAPE IN TUBE (TOOLED) | ASSEMBLY P/N WITH KAPTON TAPE IN T&R (NOT TOOLED) |
|----------|--|--|---|
| 4 | 78120-0407 | 78120-0417 | 78120-0427 |
| | 78120-0408 | 78120-0418 | 78120-0428 |
| | 78120-0409 | 78120-0419 | 78120-0429 |
| 6 | 78120-0607 | 78120-0617 | 78120-0627 |
| | 78120-0608 | 78120-0618 | 78120-0628 |
| | 78120-0609 | 78120-0619 | 78120-0629 |
| 8 | 78120-0807 | 78120-0817 | 78120-0827 |
| | 78120-0808 | 78120-0818 | 78120-0828 |
| | 78120-0809 | 78120-0819 | 78120-0829 |
| 10 | 78120-1007 | 78120-1017 | 78120-1027 |
| | 78120-1008 | 78120-1018 | 78120-1028 |
| | 78120-1009 | 78120-1019 | 78120-1029 |
| 12 | 78120-1207 | 78120-1217 | 78120-1227 |
| | 78120-1208 | 78120-1218 | 78120-1228 |
| | 78120-1209 | 78120-1219 | 78120-1229 |
| 14 | 78120-1407 | 78120-1417 | 78120-1427 |
| | 78120-1408 | 78120-1418 | 78120-1428 |
| | 78120-1409 | 78120-1419 | 78120-1429 |
| 16 | 78120-1607 | 78120-1617 | 78120-1627 |
| | 78120-1608 | 78120-1618 | 78120-1628 |
| | 78120-1609 | 78120-1619 | 78120-1629 |
| 18 | 78120-1807 | 78120-1817 | 78120-1827 |
| | 78120-1808 | 78120-1818 | 78120-1828 |
| | 78120-1809 | 78120-1819 | 78120-1829 |
| 20 | 78120-2007 | 78120-2017 | 78120-2027 |
| | 78120-2008 | 78120-2018 | 78120-2028 |
| | 78120-2009 | 78120-2019 | 78120-2029 |
| 22 | 78120-2207 | 78120-2217 | 78120-2227 |
| | 78120-2208 | 78120-2218 | 78120-2228 |
| | 78120-2209 | 78120-2219 | 78120-2229 |
| 24 | 78120-2407 | 78120-2417 | 78120-2427 |
| | 78120-2408 | 78120-2418 | 78120-2428 |
| | 78120-2409 | 78120-2419 | 78120-2429 |



LEGEND

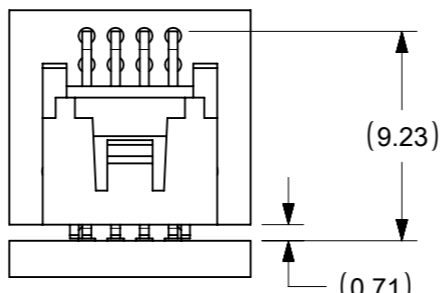
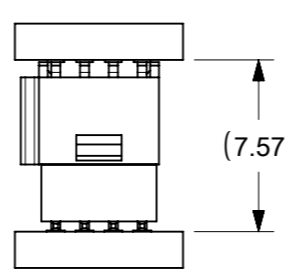
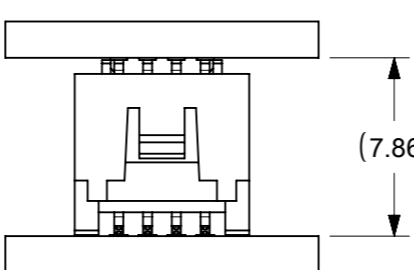
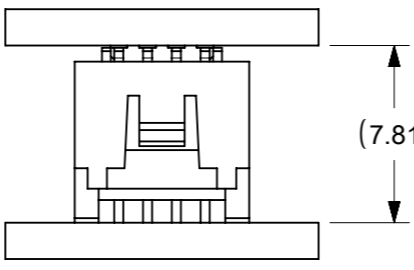
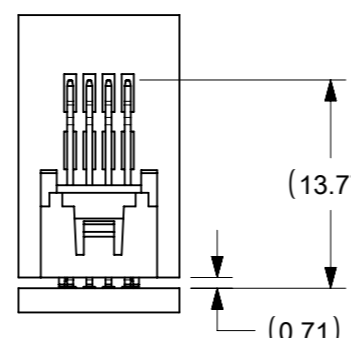
78120-X X X X


| |
|-----------------|
| CKT SIZE |
| 04 = 4 CKTS |
| . |
| 24 = 24 CKTS |

| |
|--|
| FINISHES |
| 7 = 0.05um Au MIN. GOLD ON CONTACT AND 2.54um MIN. MATTE TIN ON SOLDER TAIL OVER 1.27um MIN. NICKEL UNDERPLATE OVERALL |
| 8 = 0.38um Au MIN. GOLD ON CONTACT AND 2.54um MIN. MATTE TIN ON SOLDER TAIL OVER 1.27um MIN. NICKEL UNDERPLATE OVERALL |
| 9 = 0.76um Au MIN. GOLD ON CONTACT AND 2.54um MIN. MATTE TIN ON SOLDER TAIL OVER 1.27um MIN. NICKEL UNDERPLATE OVERALL |
| PACKAGING & PICK AND PLACE CAPABILITY |
| 0 = NO KAPTON TAPE IN TUBE |
| 1 = WITH KAPTON TAPE IN TUBE |
| 2 = WITH KAPTON TAPE IN TAPE AND REEL |

| | | | | | | | | | | | |
|---|--|------------------------|--|---------------------|--|------------|--|--------------------------|--|--|--|
| THIS DRAWING CONTAINS INFORMATION THAT IS PROPRIETARY TO MOLEX ELECTRONIC TECHNOLOGIES, LLC AND SHOULD NOT BE USED WITHOUT WRITTEN PERMISSION | | | | | | | | | | | |
| DIMENSION UNITS | | SCALE | | CURRENT REV DESC: | | | | molex | | 1.27MM PITCH SLIM-GRID VERTICAL SMT RECEPTACLE | |
| MM | | NTS | | | | | | | | | |
| GENERAL TOLERANCES (UNLESS SPECIFIED) | | | | | | | | | | | |
| ANGULAR TOL | | ± 3.0 ° | | EC NO: 672044 | | | | DOCUMENT NUMBER | | DOC TYPE DOC PART REVISION | |
| 4 PLACES | | ± | | DRWN: ABABUPS | | 2021/07/26 | | 781200001 | | PSD 000 A3 | |
| 3 PLACES | | ± | | CHK'D: MRAMAKRISHNA | | 2021/07/30 | | PRODUCT CUSTOMER DRAWING | | | |
| 2 PLACES | | ± 0.2 | | APPR: MRAMAKRISHNA | | 2021/07/30 | | MATERIAL NUMBER | | CUSTOMER | |
| 1 PLACE | | ± | | INITIAL REVISION: | | | | SEE TABLE | | GENERAL MARKET | |
| 0 PLACES | | ± | | DRWN: SCHEONG | | 2016/02/21 | | SHEET NUMBER | | 2 OF 3 | |
| | | | | APPR: KHLIM | | 2016/07/18 | | | | | |
| DRAFT WHERE APPLICABLE MUST REMAIN WITHIN DIMENSIONS | | THIRD ANGLE PROJECTION | | DRAWING | | SERIES | | MATERIAL NUMBER | | CUSTOMER | |
| | | ⊕ | | A3-SIZE | | 78120 | | SEE TABLE | | GENERAL MARKET | |

BOARD TO BOARD (BTB) DISTANCE

| HEADER | MATES WITH (RECEPTACLE) | BTB DIST. | PICTORIAL VIEW |
|--------|-------------------------|-----------|---|
| 201021 | 78120 | 9.23 |  |
| 87933 | | 7.57 |  |
| 200989 | | 7.86 |  |
| 201022 | | 7.81 |  |
| 201173 | | 13.77 |  |

| | | | | | | | | | | |
|---|---------|--------------------------------|---------|--------|---|--|----------------|----------|----------|--------------|
| THIS DRAWING CONTAINS INFORMATION THAT IS PROPRIETARY TO MOLEX ELECTRONIC TECHNOLOGIES, LLC AND SHOULD NOT BE USED WITHOUT WRITTEN PERMISSION | | | | | | | | | | |
| DIMENSION UNITS | SCALE | CURRENT REV DESC: | | |  | | | | | |
| MM | NTS | | | | | | | | | |
| GENERAL TOLERANCES (UNLESS SPECIFIED) | | EC NO: 672044 | | | 1.27MM PITCH SLIM-GRID VERTICAL SMT RECEPTACLE | | | | | |
| ANGULAR TOL | ± 3.0 ° | DRWN: ABABUPS 2021/07/26 | | | PRODUCT CUSTOMER DRAWING | | | | | |
| 4 PLACES | ± | CHK'D: MRAMAKRISHNA 2021/07/30 | | | DOCUMENT NUMBER | | | | | |
| 3 PLACES | ± | APPR: MRAMAKRISHNA 2021/07/30 | | | 781200001 | | | DOC TYPE | DOC PART | REVISION |
| 2 PLACES | ± 0.2 | INITIAL REVISION: | | | PSD 000 A3 | | | | | |
| 1 PLACE | ± | DRWN: SCHEONG 2016/02/21 | | | MATERIAL NUMBER | | | | | |
| 0 PLACES | ± | APPR: KHLIM 2016/07/18 | | | 78120 | | | CUSTOMER | | SHEET NUMBER |
| DRAFT WHERE APPLICABLE MUST REMAIN WITHIN DIMENSIONS | | THIRD ANGLE PROJECTION | DRAWING | SERIES | SEE TABLE | | GENERAL MARKET | | 3 OF 3 | |