

## 3.2inch RPi LCD (B)

DVD с ПО и примерами можно скачать по ссылке:

[https://mega.co.nz/#!xQ8XFCTI!aeK-w\\_WcusXk43XBGppj0tn-Bv2nG6u2jgclN7IC-F0](https://mega.co.nz/#!xQ8XFCTI!aeK-w_WcusXk43XBGppj0tn-Bv2nG6u2jgclN7IC-F0)



3.2 inch Resistive Touch Screen TFT LCD Designed for Raspberry Pi, Raspbian IMG Provided

### Features

- Designed for Raspberry Pi, easy to use
- Supports any revision of Raspberry Pi (directly-pluggable)
- Supports Raspbian system, enables your system to:
  - Play videos (supports multi formats, MP4 and so on)
  - Take photos by touching (up to 17 camera modes)
  - Support software keyboard (system interaction without keyboard/mouse)
- High quality immers gold surface plating

### Key Parameters

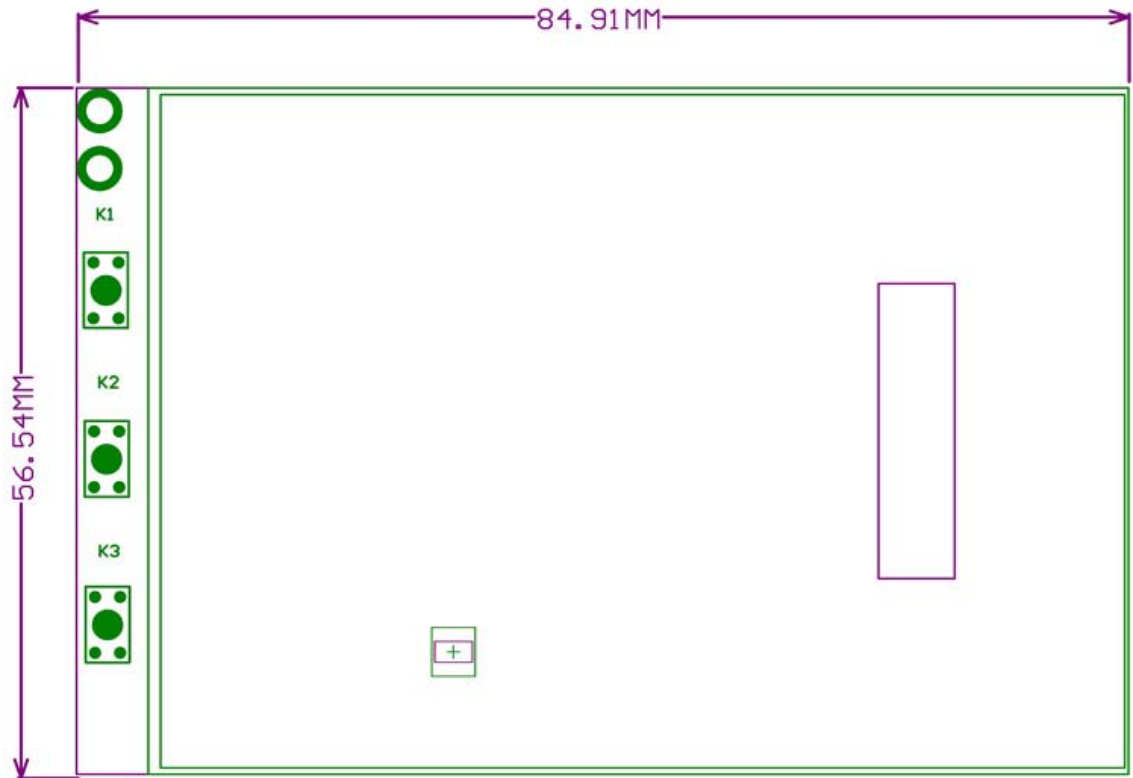
<b>LCD Type</b>	TFT
<b>LCD Interface</b>	SPI
<b>Touch Screen Type</b>	Resistive

<b>Touch Screen Controller</b>	XPT2046
<b>Colors</b>	65536
<b>Backlight</b>	LED
<b>Resolution</b>	320*240 (Pixel)
<b>Aspect Ratio</b>	4:3
<b>Power Consumption</b>	TBD
<b>Backlight Current</b>	TBD
<b>Operating Temp. (°C)</b>	TBD

## Interface

PIN NO.	SYMBOL	DESCRIPTION
1, 17	3.3V	Power positive (3.3V power input)
2, 4	5V	Power positive (5V power input)
3, 5, 7, 8, 10, 22	NC	NC
6, 9, 14, 20, 25	GND	Ground
11	TP_IRQ	Touch Panel interrupt, low level while the Touch Panel detects touching
12	KEY1	Key
13	RST	Reset
15	LCD_RS	LCD instruction control, Instruction/Data Register selection
16	KEY2	Key
18	KEY3	Key
19	LCD_SI / TP_SI	SPI data input of LCD/Touch Panel
21	TP_SO	SPI data output of Touch Panel
23	LCD_SCK / TP_SCK	SPI clock of LCD/Touch Panel
24	LCD_CS	LCD chip selection, low active
26	TP_CS	Touch Panel chip selection, low active

## External Dimension



## Package Contains

1. 3.2inch RPi LCD (B) x 1
2. Touch pen x 1
3. RPi screws pack (2pcs) x 1