

# REL-MR- 24DC/21 - Single relay

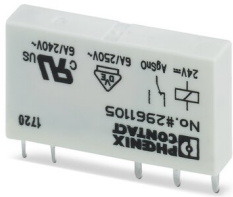


2961105

<https://www.phoenixcontact.com/us/products/2961105>

Please be informed that the data shown in this PDF document is generated from our Online Catalog. Please find the complete data in the user documentation. Our General Terms of Use for Downloads are valid.

Plug-in miniature power relay, with power contact, 1 changeover contact, input voltage 24 V DC



## Your advantages

- Safe isolation according to DIN EN 50178 between coil and contact
- High degree of protection up to RT III depending on type (wash-proof)
- Power contacts up to 6 A

## Commercial Data

Item number	2961105
Packing unit	1 pc
Minimum order quantity	10 pc
Sales Key	C460
Product Key	CK6195
Catalog Page	Page 284 (C-5-2019)
GTIN	4017918130893
Weight per Piece (including packing)	6.71 g
Weight per Piece (excluding packing)	5 g
Customs tariff number	85364900
Country of origin	CZ

# REL-MR- 24DC/21 - Single relay



2961105

<https://www.phoenixcontact.com/us/products/2961105>

## Technical Data

### Product properties

Product type	Single relay
Set comprises	2966171 PLC-RSC- 24DC/21
	2966184 PLC-RSC- 24UC/21
	2966113 PLC-RSC- 48DC/21
	2966472 PLC-RSP- 24DC/21
	2966485 PLC-RSP- 24UC/21
	2966498 PLC-RSP- 48DC/21
	2900299 PLC-RPT- 24DC/21
	2900300 PLC-RPT- 24UC/21
	2900301 PLC-RPT- 48DC/21
	2966210 PLC-RSC- 24DC/ 1/ACT
	2967345 PLC-RSP- 24DC/ 1/ACT
	2900312 PLC-RPT- 24DC/ 1/ACT
	2903370 RIF-0-RPT-24DC/21
2903374 RIF-0-RSC-24DC/21	
Operating mode	100% operating factor
Mechanical service life	2x 10 <sup>7</sup> cycles

### Insulation characteristics

Overvoltage category	III
Pollution degree	3

### Electrical properties

Maximum power dissipation for nominal condition	0.17 W
Test voltage (Winding/contact)	4 kV AC (50 Hz, 1 min., winding/contact)

### Input data

#### Coil side

Nominal input voltage $U_N$	24 V DC
Input voltage range	14.4 V DC ... 66 V DC
Input voltage range in reference to $U_N$	see diagram
Drive and function	monostable
Drive (polarity)	non-polarized
Typical input current at $U_N$	7 mA
Typical response time	5 ms
Typical release time	2.5 ms
Coil resistance	3390 $\Omega$ $\pm$ 10 % (at 20 °C)

### Output data

#### Switching

# REL-MR- 24DC/21 - Single relay



2961105

<https://www.phoenixcontact.com/us/products/2961105>

Contact type	1 changeover contact
Type of switch contact	Single contact
Contact material	AgSnO
Maximum switching voltage	250 V AC/DC
Minimum switching voltage	5 V (at 100 mA)
Limiting continuous current	6 A
Maximum inrush current	10 A (4 s)
Min. switching current	10 mA (at 12 V)
Interrupting rating (ohmic load) max.	140 W (at 24 V DC) 20 W (at 48 V DC) 18 W (at 60 V DC) 23 W (at 110 V DC) 40 W (at 220 V DC) 1500 VA (for 250 V AC)
Switching capacity	2 A (at 24 V, DC13) 0.2 A (at 110 V, DC13) 0.1 A (at 220 V, DC13) 3 A (at 24 V, AC15) 3 A (at 120 V, AC15) 3 A (at 230 V, AC15)
Motor load according to UL 508	1/4 HP, 240 - 277 V AC (N/O contact) 1/6 HP, 240 - 277 V AC (N/C contact)

## Connection data

Connection method	Plug / solder connection
-------------------	--------------------------

## Dimensions

Dimensional drawing	
Width	5 mm
Height	28 mm
Depth	15 mm

## Environmental and real-life conditions

### Ambient conditions

Degree of protection	RT III
Ambient temperature (operation)	-40 °C ... 85 °C
Ambient temperature (storage/transport)	-40 °C ... 85 °C

## Standards and regulations

IEC 60664

# REL-MR- 24DC/21 - Single relay



2961105

<https://www.phoenixcontact.com/us/products/2961105>

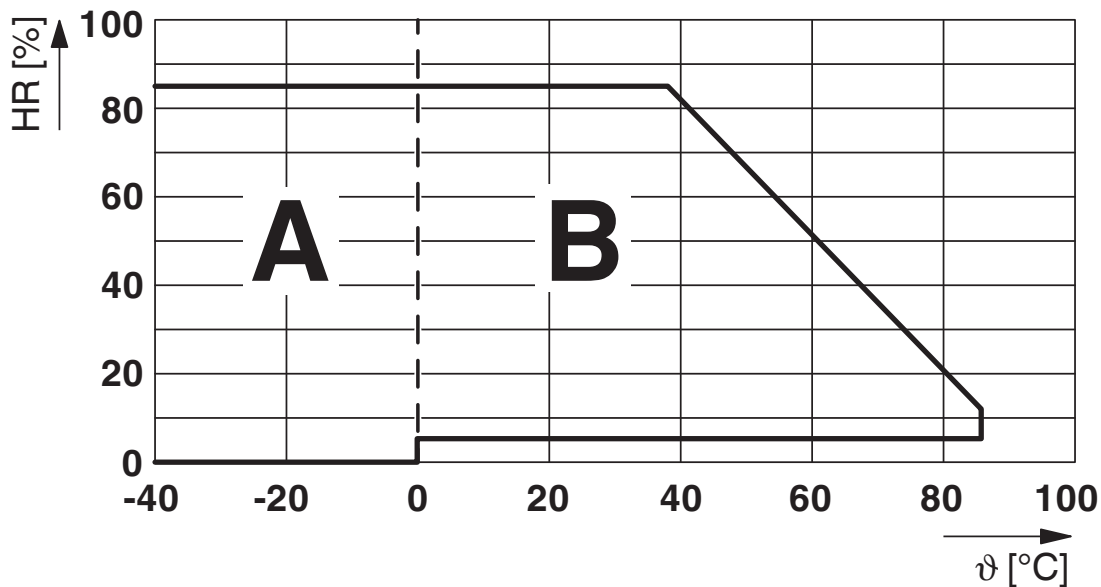
Standards/regulations	EN 50178
	EN 61810-1

## Mounting

Assembly instructions	in rows with zero spacing
Mounting position	any

## Drawings

Diagram



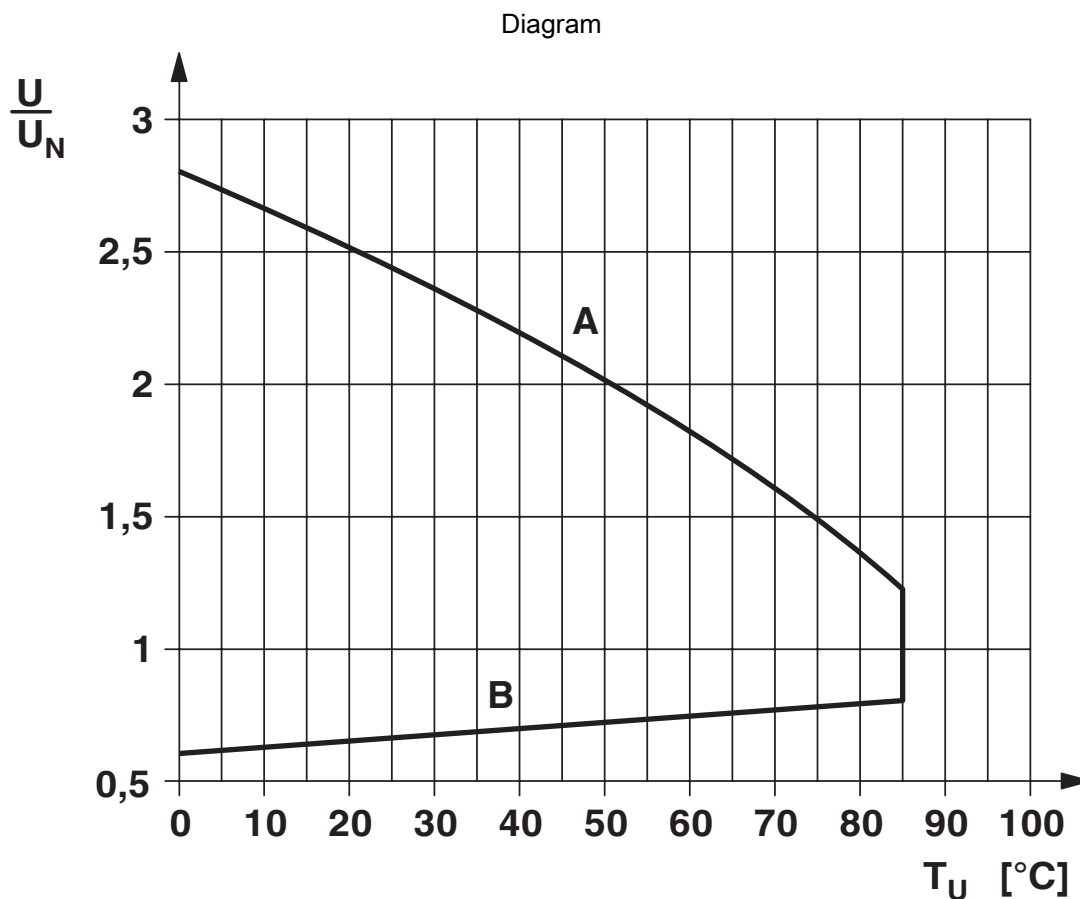
Permissible humidity for operation and storage.

The maximum permissible ambient temperature as specified in the data sheet must be observed.

Area A: Ice buildup at ambient temperatures  $\leq 0^\circ\text{C}$  must be prevented

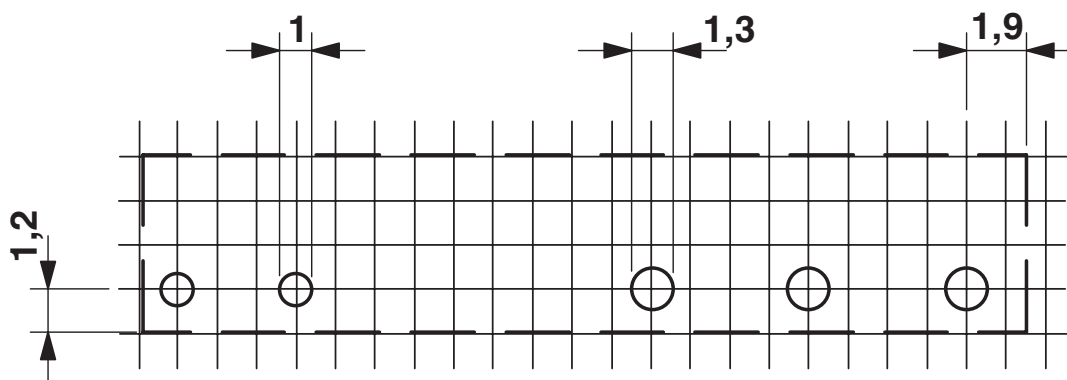
Area B: Condensation at ambient temperatures  $> 0^\circ\text{C}$  must be prevented

On 30 full days that are naturally distributed across an entire year, a humidity level of 95% is permissible at an ambient temperature  $\leq 25^\circ\text{C}$ .



Operating voltage range

Drilling plan/solder pad geometry



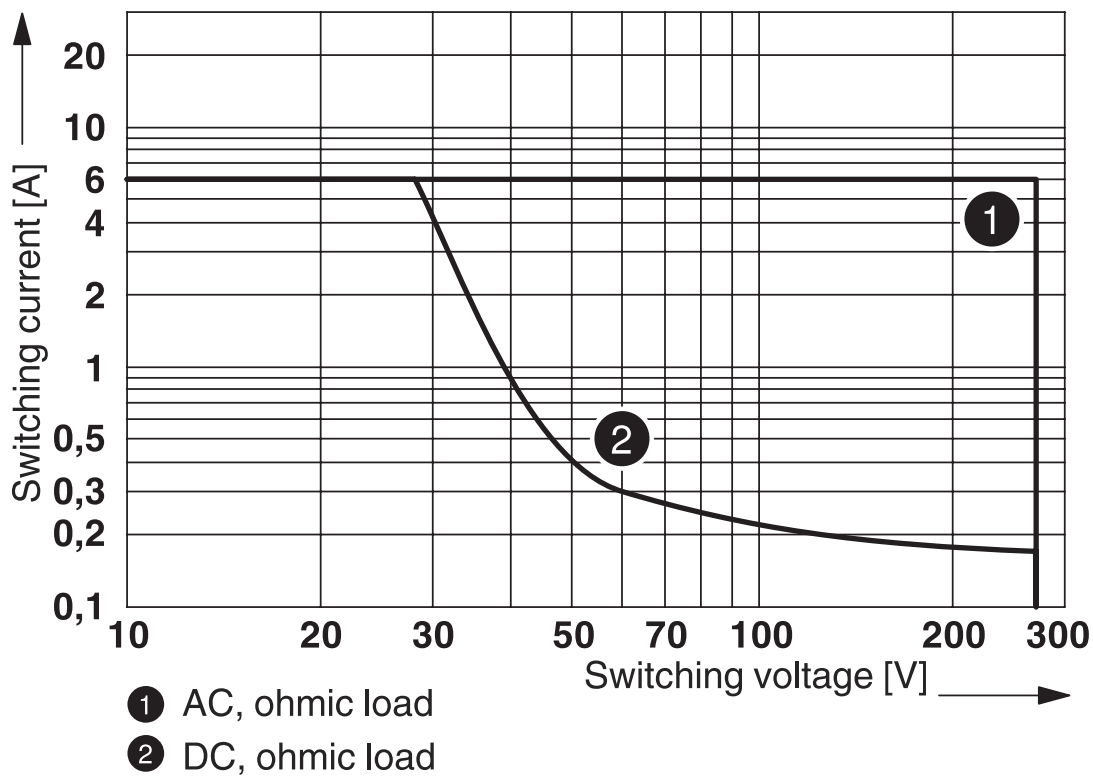
a = pitch division 1.25 mm and 1.27 mm

# REL-MR- 24DC/21 - Single relay

2961105

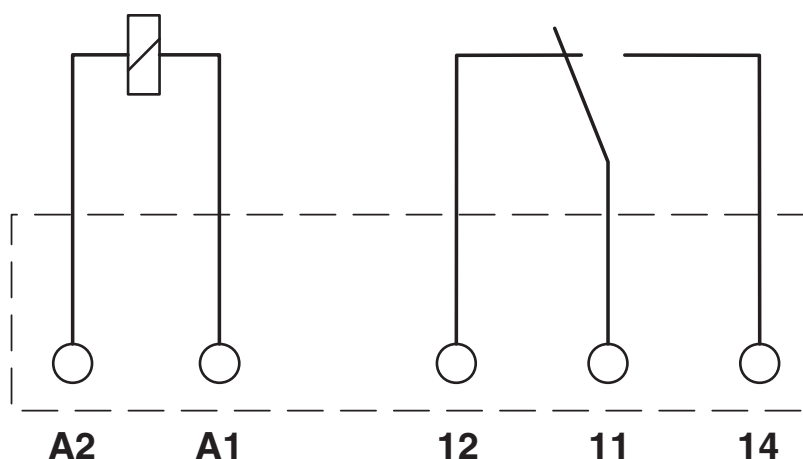
<https://www.phoenixcontact.com/us/products/2961105>

Diagram



Interrupting rating

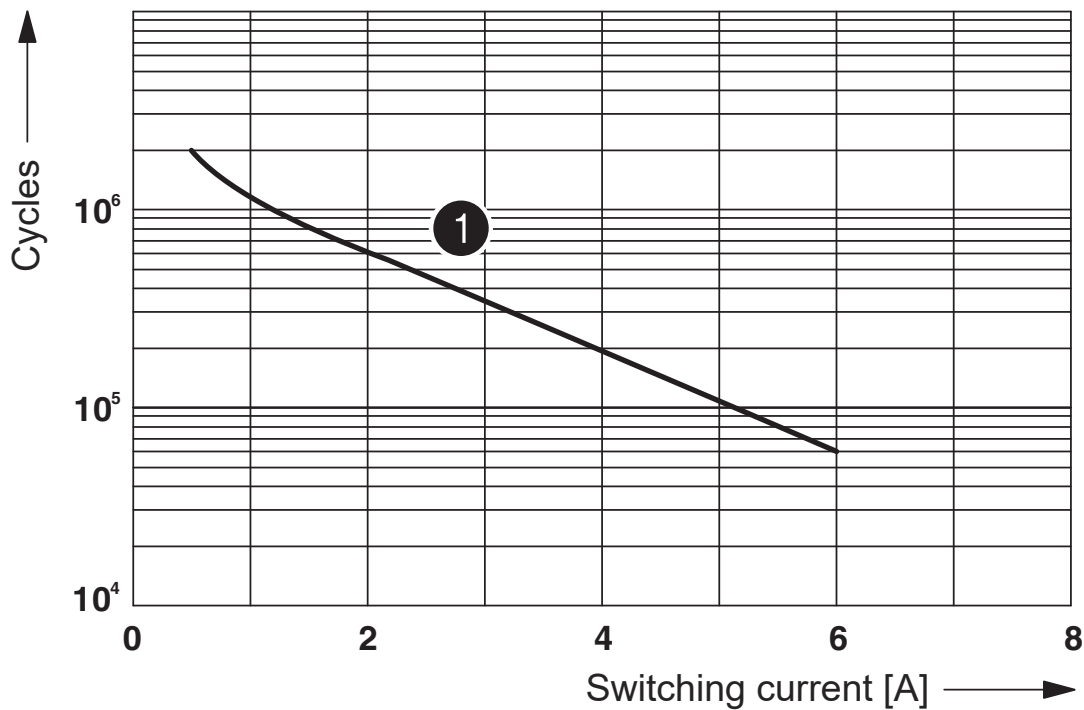
Circuit diagram



2961105

<https://www.phoenixcontact.com/us/products/2961105>

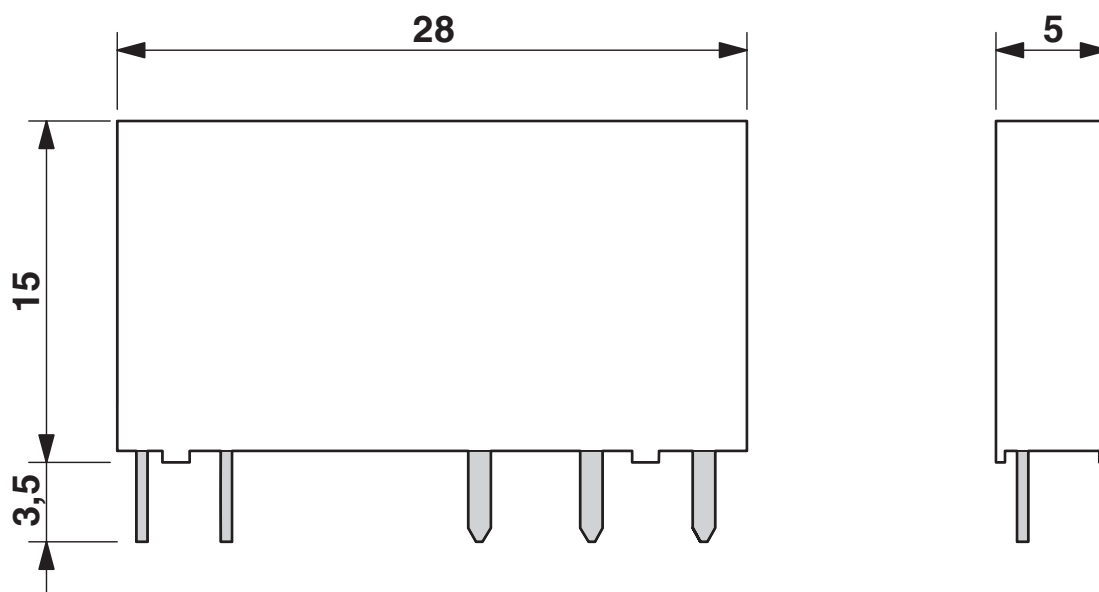
Diagram



① 250 V AC, ohmic load

Electrical service life

Dimensional drawing





# REL-MR- 24DC/21 - Single relay



2961105

<https://www.phoenixcontact.com/us/products/2961105>

## Approvals

To download certificates, visit the product detail page: <https://www.phoenixcontact.com/us/products/2961105>



**cUL Recognized**  
Approval ID: FILE E 172140



**UL Recognized**  
Approval ID: FILE E 172140



**EAC**  
Approval ID: TR\_TS\_D\_00573\_c



**UL Recognized**  
Approval ID: FILE E 172140



**EAC**  
Approval ID: RU\*C-DE.\*08.B.00010



**VDE Zeichengenehmigung**  
Approval ID: 40010212



**VDE Zeichengenehmigung**  
Approval ID: 40032864



**cUL Recognized**  
Approval ID: FILE E 172140



**VDE Zeichengenehmigung**  
Approval ID: 40054426



**cUL Recognized**  
Approval ID: FILE E 172140



**UL Recognized**  
Approval ID: FILE E 172140

# REL-MR- 24DC/21 - Single relay



2961105

<https://www.phoenixcontact.com/us/products/2961105>

## Classifications

### ECLASS

ECLASS-11.0	27371601
ECLASS-12.0	27371601
ECLASS-13.0	27371601

### ETIM

ETIM 8.0	EC001437
----------	----------

### UNSPSC

UNSPSC 21.0	39122300
-------------	----------

# REL-MR- 24DC/21 - Single relay



2961105

<https://www.phoenixcontact.com/us/products/2961105>

## Environmental Product Compliance

China RoHS	Environmentally friendly use period: unlimited = EFUP-e
	No hazardous substances above threshold values

# REL-MR- 24DC/21 - Single relay

2961105

<https://www.phoenixcontact.com/us/products/2961105>



## Accessories

### PLC-BPT- 24DC/21 - Relay base

2900445

<https://www.phoenixcontact.com/us/products/2900445>



6.2 mm PLC basic terminal block with Push-in connection, without relay or solid-state relay, for mounting on DIN rail NS 35/7,5, 1 changeover contact, input voltage 24 V DC

---

### PLC-BSC- 24DC/21 - Relay base

2966016

<https://www.phoenixcontact.com/us/products/2966016>



6.2 mm PLC basic terminal block with screw connection, without relay or solid-state relay, for mounting on DIN rail NS 35/7,5, 1 changeover contact, input voltage 24 V DC

# REL-MR- 24DC/21 - Single relay

2961105

<https://www.phoenixcontact.com/us/products/2961105>



## PLC-BPT- 24UC/21 - Relay base

2900446

<https://www.phoenixcontact.com/us/products/2900446>



6.2 mm PLC basic terminal block with Push-in connection, without relay or solid-state relay, for mounting on DIN rail NS 35/7,5, 1 changeover contact, input voltage 24 V AC/DC

---

## PLC-BSC- 24UC/21 - Relay base

2966029

<https://www.phoenixcontact.com/us/products/2966029>



6.2 mm PLC basic terminal block with screw connection, without relay or solid-state relay, for mounting on DIN rail NS 35/7,5, 1 changeover contact, input voltage 24 V AC/DC

# REL-MR- 24DC/21 - Single relay

2961105

<https://www.phoenixcontact.com/us/products/2961105>



## PLC-BPIT- 48DC/21 - Relay base

2900447

<https://www.phoenixcontact.com/us/products/2900447>



6.2 mm PLC basic terminal block with Push-in connection, without relay or solid-state relay, for mounting on DIN rail NS 35/7,5, 1 changeover contact, input voltage 48 V DC

---

## PLC-BSC- 48DC/21 - Relay base

2966090

<https://www.phoenixcontact.com/us/products/2966090>



6.2 mm PLC basic terminal block with screw connection, without relay or solid-state relay, for mounting on DIN rail NS 35/7,5, 1 changeover contact, input voltage 48 V DC

# REL-MR- 24DC/21 - Single relay

2961105

<https://www.phoenixcontact.com/us/products/2961105>

## PLC-BPT- 24DC/ 1/SEN - Relay base

2900262

<https://www.phoenixcontact.com/us/products/2900262>



6.2 mm PLC basic terminal block for input functions with push-in connection, without relay or solid-state relay, for mounting on DIN rail NS 35/7,5, with sensor supply voltage distribution (BB), 1 N/O contact, input voltage 24 V DC

---

## PLC-BSC- 24DC/ 1/SEN - Relay base

2966061

<https://www.phoenixcontact.com/us/products/2966061>



6.2 mm PLC basic terminal block for input functions with screw connection, without relay or solid-state relay, for mounting on DIN rail NS 35/7,5, with sensor supply voltage distribution (BB), 1 N/O contact, input voltage 24 V DC

# REL-MR- 24DC/21 - Single relay

2961105

<https://www.phoenixcontact.com/us/products/2961105>



## PLC-BPT- 24UC/ 1/ACT - Relay base

2900450

<https://www.phoenixcontact.com/us/products/2900450>



6.2 mm PLC basic terminal block for output functions with push-in connection, without relay or solid-state relay, for mounting on DIN rail NS 35/7,5, with load return line connection (BB), 1 N/O contact, input voltage 24 V AC/DC

---

## PLC-BSC- 24UC/ 1/ACT - Relay base

2982799

<https://www.phoenixcontact.com/us/products/2982799>



6.2 mm PLC basic terminal block for output functions with screw connection, without relay or solid-state relay, for mounting on DIN rail NS 35/7,5, with load return line connection (BB), 1 N/O contact, input voltage 24 V AC/DC



# REL-MR- 24DC/21 - Single relay

2961105

<https://www.phoenixcontact.com/us/products/2961105>



## PLC-BSC- 24DC/21/SO46 - Relay base

2980458

<https://www.phoenixcontact.com/us/products/2980458>



6.2 mm PLC basic terminal block with protection against interference currents/voltages on the control side, with screw connection, without relay or solid-state relay, for mounting on DIN rail NS 35/7,5, with increased input current consumption, 1 changeover contact, input voltage 24 V DC

---

## RIF-0-BPT/21 - Relay base

2900958

<https://www.phoenixcontact.com/us/products/2900958>



Relay base RIF-0..., for miniature power relay with 1 changeover contact or solid-state relays of the same design, Push-in connection, for mounting on NS 35/7,5

# REL-MR- 24DC/21 - Single relay

2961105

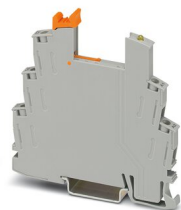
<https://www.phoenixcontact.com/us/products/2961105>



## RIF-0-BSC/21 - Relay base

2900957

<https://www.phoenixcontact.com/us/products/2900957>



RIF-0... relay base, for miniature power relay with 1 changeover contact or identical solid-state relays, screw connection, for mounting on NS 35/7,5

---

Phoenix Contact 2023 © - all rights reserved

<https://www.phoenixcontact.com>

Phoenix Contact USA  
586 Fulling Mill Road  
Middletown, PA 17057, United States  
(+717) 944-1300  
[info@phoenixcon.com](mailto:info@phoenixcon.com)