



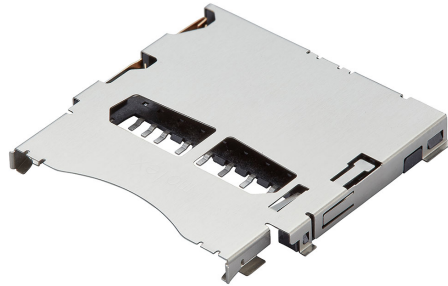
**Part Number :** [5035000991](#)

**Product Description :** 2.50mm Pitch SD Memory Card Connector, 2.95mm Height, Normal Mount, Push-Push, with Detect, Protect and Anti-Card-Fly-Out Features

**Series Number :** 503500

**Status :** New Business Not Supported

**Product Category :** Memory / SIM Card Connectors



---

## Documents & Resources

---

## Product Environment Compliance

### Compliance

GADSL/IMDS	Not Relevant
China RoHS	
EU ELV	Not Relevant
Low-Halogen Status	Low-Halogen per IEC 61249-2-21
REACH SVHC	Not Contained per D(2023)3788-DC (14 Jun 2023)
EU RoHS	Compliant per EU 2015/863

### Multiple Part Product Compliance Statements

- Eu RoHS
- REACH SVHC
- Low-Halogen

### Multiple Part Industry Compliance Documents

- IPC 1752A Class C
- IPC 1752A Class D
- Molex Product Compliance Declaration
- IEC-62474
- chemSHERPA (xml)

### EU RoHS Certificate of Compliance

---

## Part Details

### General

Status	New Business Not Supported
Category	Memory / SIM Card Connectors
Series	503500
Description	2.50mm Pitch SD Memory Card Connector, 2.95mm Height, Normal Mount, Push-Push, with Detect, Protect and Anti-Card-Fly-Out Features
Product Family	SD and SIM Memory Card Sockets
Product Name	SD Card
Style	Push-Push
UPC	884982101593

## Electrical

Current - Maximum per Contact	0.5A
Shielded	Yes
Voltage - Maximum	50V AC (RMS)/DC

## Physical

Card Detection Switch	Open
Card Entry Location	Front
Circuits (Loaded)	9
Durability (mating cycles max)	10000
Ejector Button Side	N/A
Material - Contact	Copper Alloy
Material - Plating Mating	Gold
Material - Plating Termination	Tin
Material - Shell	Stainless Steel
Net Weight	1547.679/mg
Packaging Type	Embossed Tape on Reel
PCB Locator	No
PCB Retention	Yes
Pitch - Mating Interface	2.50mm
Temperature Range - Operating	-25° to +85°C
Termination Interface Style	Surface Mount

---

This document was generated on Feb 07, 2024