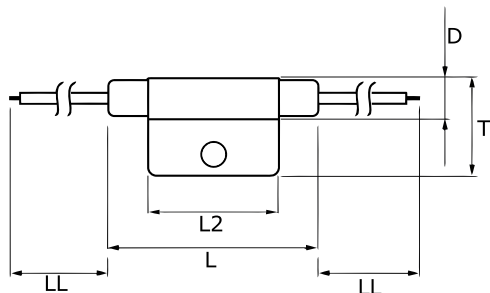


**KEMET Part Number: TRS5-100BLRU**  
(USEG100BLR0000)

KEMET, TRS, Thermal Reed Switch, Axial, 2.5C Temperature Accuracy, High Reliability, High-Speed Response, Long Operational Life, Excellent Environmental Durability, High Temperature Accuracy, 100°C, Break



**Dimensions**

D	8.2mm MAX
L	50mm MAX
L2	29mm MAX
T	20mm MAX
LL	200mm

**Packaging Specifications**

<b>Packaging:</b>	Rubberband Box
<b>Packaging Quantity:</b>	600
<b>Weight:</b>	8.5 g

**General Information**

<b>Series:</b>	TRS
<b>Type:</b>	Thermal Reed Switch
<b>Style:</b>	Axial
<b>Description:</b>	Thermal Reed Switch
<b>Features:</b>	High Reliability, High-Speed Response, Long Operational Life, Excellent Environmental Durability, High Temperature Accuracy
<b>Lead:</b>	Cables
<b>RoHS:</b>	Yes
<b>Qualifications:</b>	UL, CSA

**Specifications**

<b>Switching Temperature:</b>	100C +/-2.5C
<b>Temperature Range:</b>	-20/+130C
<b>Contact Type:</b>	Break
<b>Voltage DC:</b>	1500 VAC/1 minute or 1800 VAC/1 second
<b>Voltage AC:</b>	140 VAC MAX (Opening/Closing)
<b>Current:</b>	0.5 Amps AC/DC MAX (Opening/Closing), 1 mAmps MIN (5VDC, Opening/Closing)
<b>Resistance:</b>	150 mOhms MAX (Contact Resistance)
<b>Max Opening/Closing Power:</b>	50 W (AC/DC)
<b>Max Opening/Closing Voltage:</b>	140 V (AC)
<b>Differential Temperature:</b>	10C Maximum