



### FEATURES:

- Low Power Consumption
- Low Stand by Current
- Exceptional Stability Over Temp. at -40°C to +85°C
- Available over Extended Temp Range
- Low Cost-Compact QFN Plastic Packaging
- Compact Package design

### APPLICATIONS:

- CCD Clock for VTR Camera
- Equipment Connected to PCs
- Low Profile Equipment
- Lower Cost Crystal Oscillator Replacement
- Computers and Peripherals
- Portable Electronics (MP3 Players, Games)
- Consumer Electronics such as TV's, DVR's, etc.
- Vibrant, Shock-Prone & Humid Environments for Industrial Equipment
- Demanding Military & Automotive Electronics

### STANDARD SPECIFICATIONS:

Parameters		Minimum	Typical	Maximum	Units	Notes
Frequency Range:		1.0	-----	150	MHz	
Operating Temperature:		0	-----	+70	°C	See options
Storage Temperature:		-55	-----	+150	°C	
Supply Voltage (Vdd):		+1.8 ~ +3.3				See options
Supply Current (no load):	1.0 to 39.9999MHz	-----	7	15	mA	Vdd=3.3V No load RL=∞ T=25°C
	40.0 to 79.9999MHz	-----	8	15		
	80.0 to 124.9999MHz	-----	9	15		
	125.0 to 150MHz	-----	10	15		
Output Voltage:	V <sub>OH</sub>	0.8*V <sub>dd</sub>	-----	-----	V	15pF
	V <sub>OL</sub>	-----	-----	0.2*V <sub>dd</sub>		
Rise Time:	Tr	-----	1.3	3.0	ns	15pF; T=25°C 20%/80%*VDD
Fall Time:	Tf	-----	1.3	3.0		
Output Load:		15pF max / 10kΩ min.			pF	See options
Symmetry:		45	-----	55	%	@1/2Vdd
Startup Time:		-----	1.5	3.0	ms	
Disable Time:		-----	20	100	ns	
Disable Stand-by Current:		-----	-----	15	uA	
Tri-state Function (Stand-by) :		"1" (VIH≥0.75*Vdd) or Open: Oscillation "0" (VIH<0.25*Vdd) : Hi Z			V	
Cycle to cycle jitter:		-----	60	-----	ps	F=100MHz
Aging:		-5.0	-----	+5.0	ppm	First year

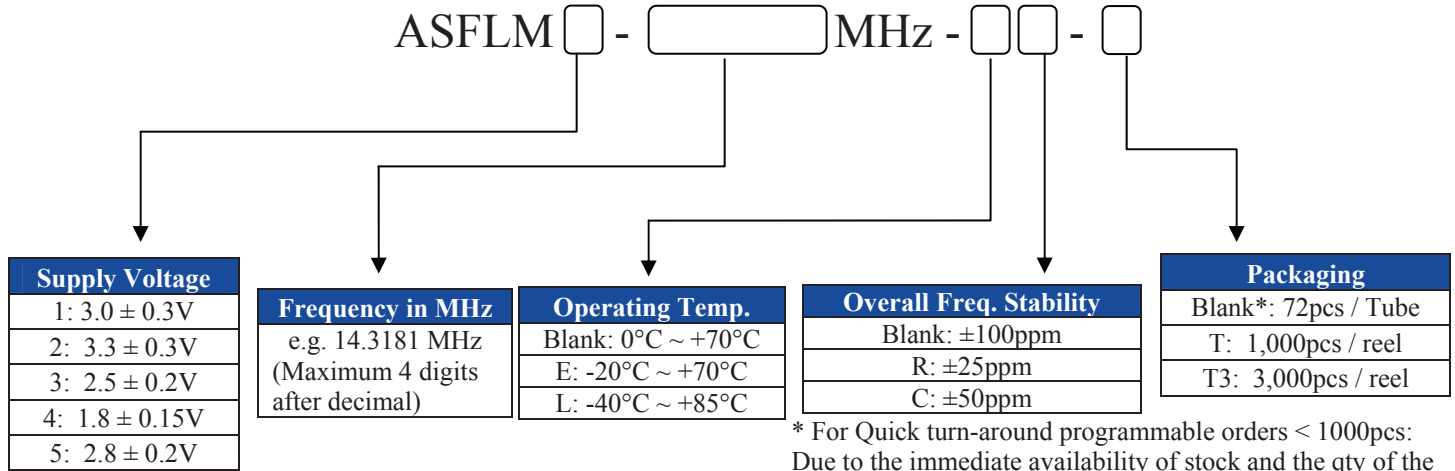
### Absolute Maximum Ratings

Item	Minimum	Maximum	Unit	Condition
Supply Voltage	-0.3	+4.0	V	
Input Voltage	-0.3	Vdd+0.3	V	
Junction Temp.	-----	+150	°C	
Soldering Temp.	-----	+260	°C	40sec max
ESD			V	
HBM		2,000		
MM		200		
CDM		500		



## PART NUMBER FOR PROGRAMMED ORDER S

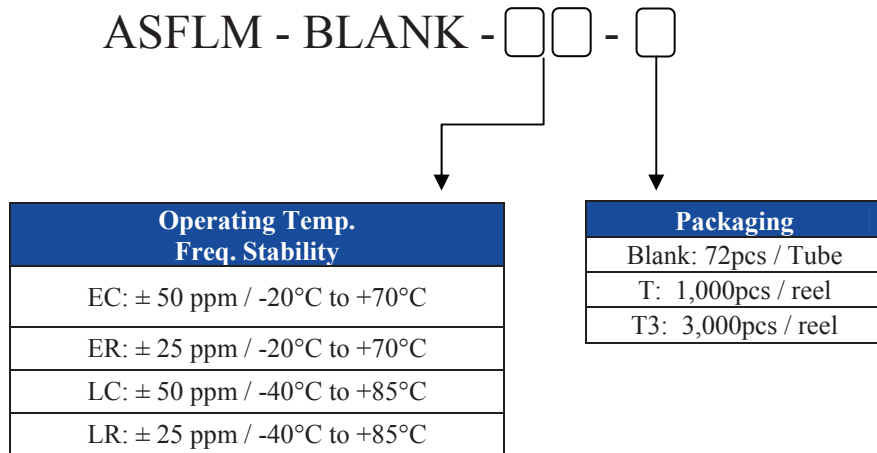
### Programmed Orders (Quantity > 1,000pcs)



\* For Quick turn-around programmable orders < 1000pcs: Due to the immediate availability of stock and the qty of the order, the parts may be delivered as BULK: Cut Tape, Loose parts in Antistatic Bag or in Tube(s). The MOQ per the series will still apply for Tube packaging.

### Un-Programmed Orders (Quantity < 1,000pcs)

Blank un-programmed oscillators are available for quick turn engineering requirements. Please call ABRACON for more information.

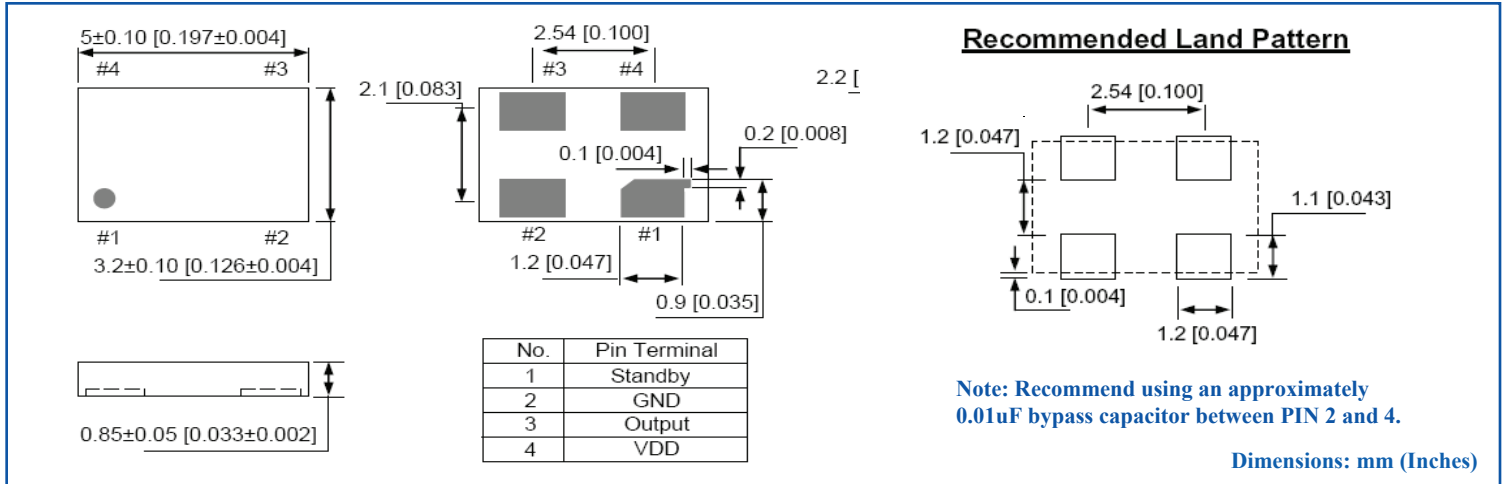




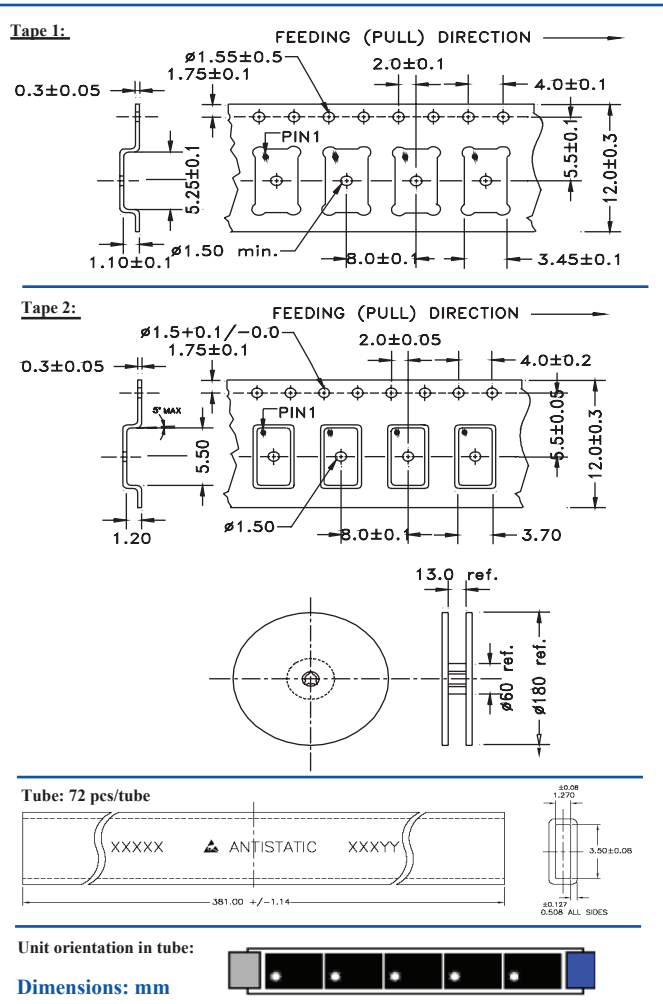
ASFLM

RoHS/RoHS II Compliant

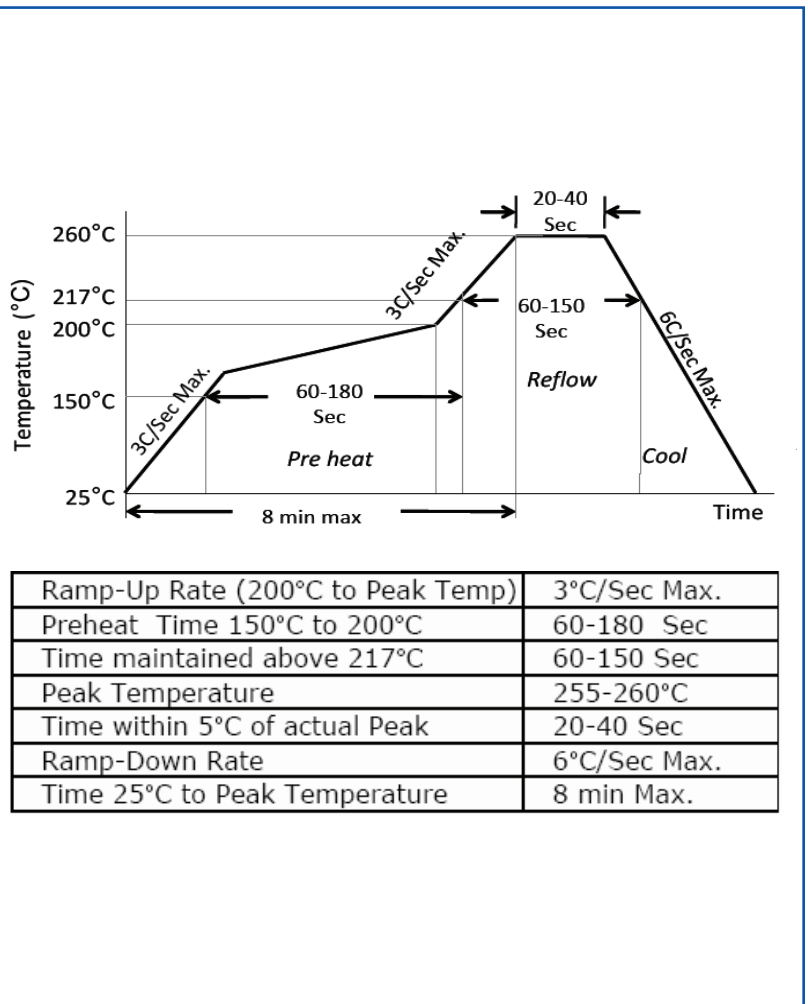
## OUTLINE DRAWING:



## TAPE & REEL:



## REFLOW PROFILE:



**ATTENTION:** Abracon LLC's products are COTS – Commercial-Off-The-Shelf products; suitable for Commercial, Industrial and, where designated, Automotive Applications. Abracon's products are not specifically designed for Military, Aviation, Aerospace, Life-dependent Medical applications or any application requiring high reliability where component failure could result in loss of life and/or property. For applications requiring high reliability and/or presenting an extreme operating environment, written consent and authorization from Abracon LLC is required. Please contact Abracon LLC for more information.

# Mouser Electronics

Authorized Distributor

Click to View Pricing, Inventory, Delivery & Lifecycle Information:

## ABRACON:

[ASFLM-MEMS BLANK OSCILLATOR](#) [ASFLM1-1.8432MHZ-L-C-T](#) [ASFLM1-10.000MHZ-L-C-T](#) [ASFLM1-11.0592MHZ-L-C-T](#) [ASFLM1-12.000MHZ-L-C-T](#) [ASFLM1-14.31818MHZ-L-C-T](#) [ASFLM1-14.7456MHZ-L-C-T](#) [ASFLM1-16.000MHZ-L-C-T](#) [ASFLM1-18.432MHZ-L-C-T](#) [ASFLM1-20.000MHZ-L-C-T](#) [ASFLM1-24.000MHZ-L-C-T](#) [ASFLM1-24.576MHZ-L-C-T](#) [ASFLM1-25.000MHZ-L-C-T](#) [ASFLM1-27.000MHZ-L-C-T](#) [ASFLM1-3.6864MHZ-L-C-T](#) [ASFLM1-30.000MHZ-L-C-T](#) [ASFLM1-32.000MHZ-L-C-T](#) [ASFLM1-33.000MHZ-L-C-T](#) [ASFLM1-33.333MHZ-L-C-T](#) [ASFLM1-4.000MHZ-L-C-T](#) [ASFLM1-40.000MHZ-L-C-T](#) [ASFLM1-48.000MHZ-L-C-T](#) [ASFLM1-50.000MHZ-L-C-T](#) [ASFLM1-8.000MHZ-L-C-T](#) [ASFLM1-7.3728MHZ-L-C-T](#) [ASFLM-1.8432MHZ-EC-T](#) [ASFLM-3.6864MHZ-EC-T](#) [ASFLM-4.000MHZ-EC-T](#) [ASFLM-7.3728MHZ-EC-T](#) [ASFLM-8.000MHZ-EC-T](#) [ASFLM-10.000MHZ-EC-T](#) [ASFLM-11.0592MHZ-EC-T](#) [ASFLM-12.000MHZ-EC-T](#) [ASFLM-14.31818MHZ-EC-T](#) [ASFLM-14.7456MHZ-EC-T](#) [ASFLM-16.000MHZ-EC-T](#) [ASFLM-18.432MHZ-EC-T](#) [ASFLM-20.000MHZ-EC-T](#) [ASFLM-24.000MHZ-EC-T](#) [ASFLM-24.576MHZ-EC-T](#) [ASFLM-25.000MHZ-EC-T](#) [ASFLM-27.000MHZ-EC-T](#) [ASFLM-30.000MHZ-EC-T](#) [ASFLM-32.000MHZ-EC-T](#) [ASFLM-33.000MHZ-EC-T](#) [ASFLM-33.333MHZ-EC-T](#) [ASFLM-40.000MHZ-EC-T](#) [ASFLM-48.000MHZ-EC-T](#) [ASFLM-50.000MHZ-EC-T](#) [ASFLM1-3.6864MHZ-C-T](#) [ASFLM1-14.31818MHZ-C-T](#) [ASFLM1-40.000MHZ-C-T](#) [ASFLM1-32.000MHZ-C-T](#) [ASFLM1-30.000MHZ-C-T](#) [ASFLM1-18.432MHZ-C-T](#) [ASFLM1-12.000MHZ-C-T](#) [ASFLM1-8.000MHZ-C-T](#) [ASFLM1-25.000MHZ-C-T](#) [ASFLM1-11.0592MHZ-C-T](#) [ASFLM1-33.000MHZ-C-T](#) [ASFLM1-10.000MHZ-C-T](#) [ASFLM1-7.3728MHZ-C-T](#) [ASFLM1-24.576MHZ-C-T](#) [ASFLM1-48.000MHZ-C-T](#) [ASFLM1-50.000MHZ-C-T](#) [ASFLM1-24.000MHZ-C-T](#) [ASFLM1-4.000MHZ-C-T](#) [ASFLM1-14.7456MHZ-C-T](#) [ASFLM1-27.000MHZ-C-T](#) [ASFLM1-16.000MHZ-C-T](#) [ASFLM1-33.333MHZ-C-T](#) [ASFLM1-20.000MHZ-C-T](#) [ASFLM1-1.8432MHZ-C-T](#) [ASFLM1-125.000MHZ-LC-T](#) [ASFLM2-27.000MHZ-LR-T](#) [ASFLM2-25.000MHZ-R-T](#) [ASFLM2-12.288MHZ-LC-T](#) [ASFLM4-125.000MHZ-LC-T](#) [ASFLM1-12.000MHZ-T](#) [ASFLM1-66.6666MHZ-LC-T](#) [ASFLM1-100.000MHZ-LC-T](#) [ASFLM2-40.000MHZ-T](#) [ASFLM1-40.000MHZ-T](#) [ASFLM1-75.000MHZ-LC-T](#) [ASFLM1-66.000MHZ-LC-T](#) [ASFLM1-50.000MHZ-T](#) [ASFLM1-80.000MHZ-LC-T](#) [ASFLM-BLANK-ER](#) [ASFLM-BLANK-LR](#) [ASFLM-BLANK-LC-T](#) [ASFLM-BLANK-ER-T](#) [ASFLM-BLANK-LR-T](#) [ASFLM1-80.000MHZ-L-C-T](#) [ASFLM2-50.000MHZ-L](#)