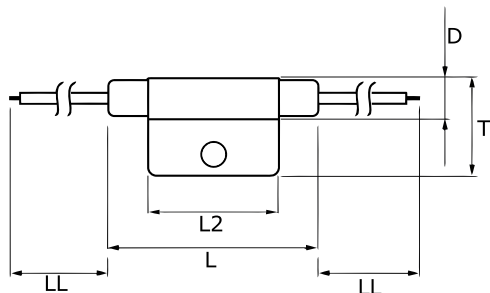


**KEMET Part Number: TRS5-10BLRU**  
(USEG10BLR00000)

KEMET, TRS, Thermal Reed Switch, Axial, 2.5C Temperature Accuracy, High Reliability, High-Speed Response, Long Operational Life, Excellent Environmental Durability, High Temperature Accuracy, 10°C, Break



General Information	
<b>Series:</b>	TRS
<b>Type:</b>	Thermal Reed Switch
<b>Style:</b>	Axial
<b>Description:</b>	Thermal Reed Switch
<b>Features:</b>	High Reliability, High-Speed Response, Long Operational Life, Excellent Environmental Durability, High Temperature Accuracy
<b>Lead:</b>	Cables
<b>RoHS:</b>	Yes

Dimensions	
<b>D</b>	8.2mm
<b>L</b>	50mm
<b>L2</b>	29mm
<b>T</b>	20mm
<b>LL</b>	200mm

Specifications	
<b>Switching Temperature:</b>	10C +/-2.5C
<b>Temperature Range:</b>	-20/+130C
<b>Contact Type:</b>	Break
<b>Voltage DC:</b>	1500 VAC/1 minute or 1800 VAC/1 second
<b>Voltage AC:</b>	140 VAC MAX (Opening/Closing)
<b>Current:</b>	0.5 Amps AC MAX (Opening/Closing), 1 mAmps MIN (5VDC, Opening/Closing)
<b>Resistance:</b>	150 mOhms MAX (Contact Resistance)
<b>Max Opening/Closing Power:</b>	50 W (AC/DC)
<b>Max Opening/Closing Voltage:</b>	140 V (AC)
<b>Differential Temperature:</b>	10C Maximum

Packaging Specifications	
<b>Packaging:</b>	Rubberband Box
<b>Packaging Quantity:</b>	600
<b>Weight:</b>	8.5 g