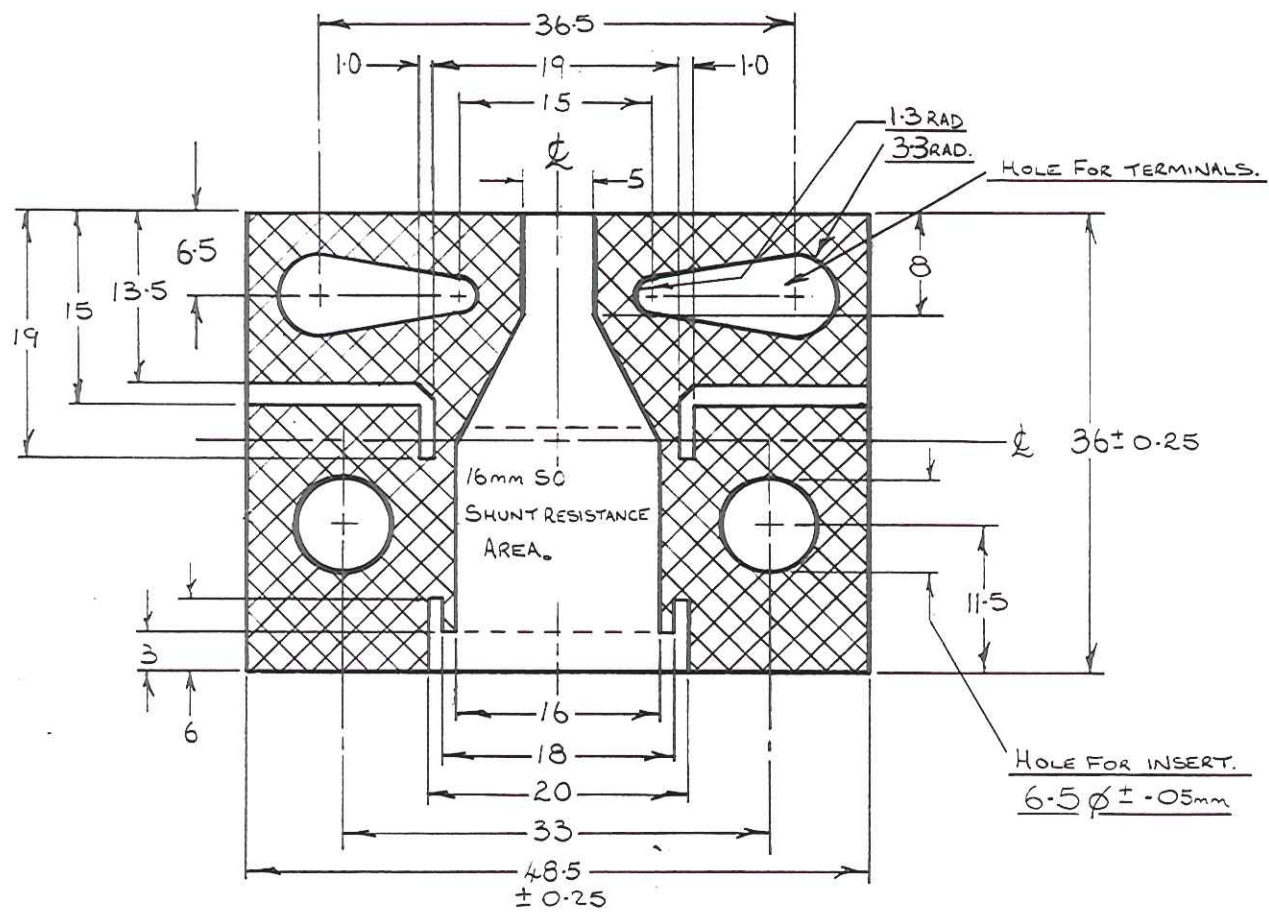


DOCUMENT	COPIES ISSUED TO: DEPT.							
ISSUE	A	B	C	D	E	F	G	PRINT(4)
CONTROL	✓	✓						

HOWARD BUTLER LTD, LINCOLN RD, WALSALL.



TITLE PHOTO ETCHED SHUNT.		
BOARD MACHINING DRAWING.		
PART NO WHEN M/C AS SHEET 4		
MATERIAL EPOXIDE RESIN BONDED FABRIC BOARD 1.6mm THICK		
FACED WITH CUPRO-NICKEL OR SOLDERED COPPER.		
FINISH CLEAN		
USED ON		
CHANGES	Date	Appd.
ISSUE 'B' TOL ADDED ON SIZE	27/6/85	M.S.
ISSUE 'C' SHEET 3 ADDED + TOL ON 6.5 Ø HOLE.	11/10/85	M.S.
ISSUE 'D' PART N° REF ADDED	7/11/85	M.S.
ISSUE 'E' Note 2) Added CCN 0129.	14/3/90	D.J.H
ISSUE 'F' M/C 'AS SHt 4' WAS AS 'SHt 3' CCN 0331	13/2/95	D.J.H
REMARKS		
1) UNSPECIFIED TOLERANCES ± 0.1mm		
2) PROFILE & CIRCUIT TO BE CENTRAL WITHIN 0.4 mm.		
Drawn	M. STABLER.	17/12/84.
Traced		
Checked		
DRAWING No. SH/957/9 SHEET 1 OF 4		

Scale 2x FULL SIZE.

Do not scale print

HOWARD BUTLER LTD, LINCOLN RD, WALSHALL.

TITLE PHOTO-ETCHED SHUNT BOARD.

PART No. SEE DRAWING.

BIN No.

MATERIAL EPOXY RESIN BONDED FABRIC BOARD 1.6mm THICK

FACED WITH SEE DRAWING.

FINISH CLEAN.

USED ON

CHANGES	Date	Appd.
ISSUE F mod to 952/003 CCN 0129	14/3/90	D.J.H.
ISSUE G Blank Nos Added CCN 0331	13/2/95	D.J.H.
ISSUE 'D' SH/952/004 WAS FACED WITH COPPER	16/10/86	M.S.
ISSUE 'E' SH/952/007 NOTE. TWO TOOLS ADDED.	14/7/87	M.S.

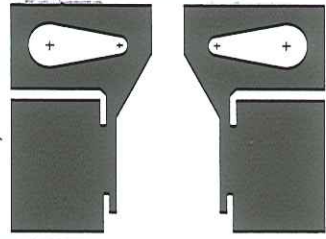
REMARKS

- 1) See SHT.1 for machining.
- 2) See SHT.3 for 'Blank' (as etched) details

COPIES IN SHUNT FILE (4) + C.H.

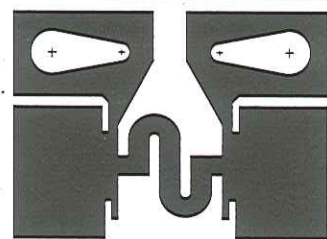
Drawn	M. STABLER	24/1/86
Traced		
Checked		

DRAWING No. SH/957/9 SHEET 4 OF 4



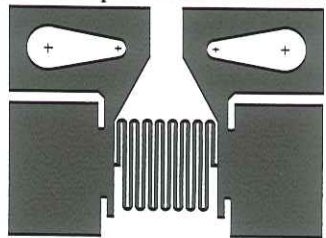
BOARD { SH/952/013-Blank
SH/952/001-M/C
R.S. N° 257-565
30A 75mV
or R.S. N° 257-363
10A 75mV

FACED WITH CUPRO-NICKEL



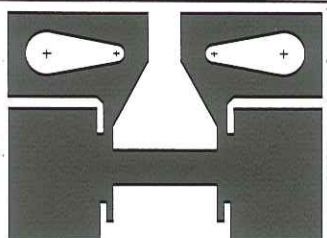
BOARD { SH/952/017-Blank
SH/952/005-M/C
R.S. N° 257-335
300mA 75mV

FACED WITH CUPRO-NICKEL



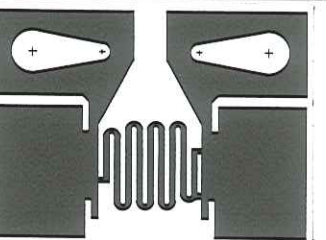
BOARD { SH/952/014-Blank
SH/952/002-M/C
R.S. N° 257-307
10mA 75mV

FACED WITH CUPRO-NICKEL



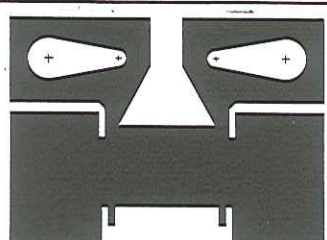
BOARD { SH/952/018-Blank
SH/952/006-M/C
R.S. N° 257-341
1A 75mV

FACED WITH CUPRO-NICKEL



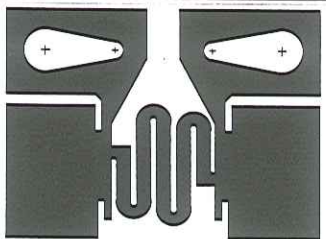
BOARD { SH/952/015-Blank
SH/952/003-M/C
R.S. N° 257-313
30mA 75mV

FACED WITH CUPRO-NICKEL



BOARD { SH/952/019-Blank
SH/952/007-M/C
R.S. N° 257-357
3A 75mV.
TWO TOOLS AVAILABLE
SH/952/007 ISSUE 1 LOW mV
SH/952/007 ISSUE 2 HIGH mV

FACED WITH CUPRO-NICKEL



BOARD { SH/952/016-Blank
SH/952/004-M/C
R.S. N° 257-329
100mA 75mV

FACED WITH CUPRO-NICKEL

Scale FULL SIZE

Do not scale print