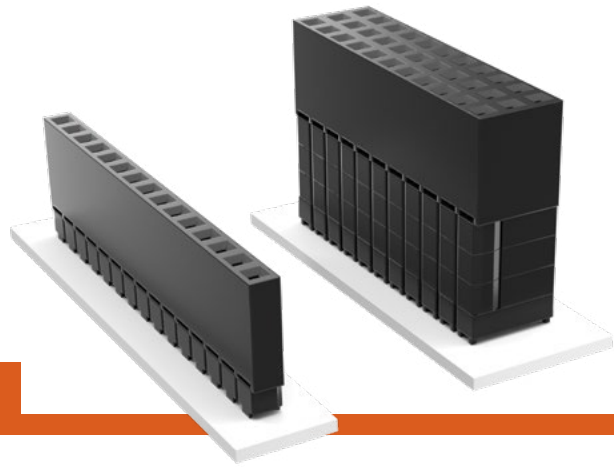


# ELEVATED SOCKETS

(2.54 mm) .100" PITCH • ESW/ESQ SERIES



## ESW/ESQ

### Mates:

TSW, MTSW, EW, MTLW, TSS, ZSS, TSM, DW, ZW, HW, TSSH, HTSS

### SPECIFICATIONS

#### Insulator Material:

Black Glass Filled Polyester

#### Contact Material:

Phosphor Bronze

#### Plating:

Au or Sn over 50 μ" (1.27 μm) Ni

#### Current Rating (ESW/TSW):

5.2 A per pin (2 pins powered)

#### Current Rating (ESQ/TSW):

5.7 A per pin (2 pins powered)

#### Voltage Rating:

550 VAC mated with TSW or ESQ

#### Operating Temp Range:

-55 °C to +125 °C with Gold  
-55 °C to +105 °C with Tin

#### Insertion Depth:

(3.68 mm) .145" to (6.35 mm) .250"

#### Normal Force:

Standard = 125 grams (4.4 N)

#### Max Cycles:

100 with 10 μ" (0.25 μm) Au

SERIES	1	NO. PINS PER ROW	LEAD STYLE	PLATING OPTION	ROW OPTION	OTHER OPTION
--------	---	------------------	------------	----------------	------------	--------------

**ESW**  
= Solder Tail

01 thru 36

Specify **LEAD STYLE** from chart

**-L**  
= 10 μ" (0.25 μm) Gold contact, Matte Tin on tail

**-S**  
= Single Row

**-LL**  
= Locking Lead (Two leads per strip crimped. Not available with single row 1 or 2 positions)

**ESQ**  
= Square Tail

**-G**  
= 20 μ" (0.51 μm) Gold contact, Gold Flash on Balance

**-D**  
= Double Row

**-T**  
= Triple Row (ESQ only)

**"XXX"**  
= Polarized

**-T**  
= Matte Tin (Not available with LIF contact)

LEAD STYLE			
STANDARD INSERTION FORCE	Low INSERTION FORCE	A	B
-12	-37	(2.29) .090	(11.05) .435
-13	-38	(7.36) .290	
-23	-48	(4.83) .190	(13.59) .535
-33	-58	(2.29) .090	(16.13) .635
-14	-39	(12.19) .480	(11.05) .435
-24	-49	(9.65) .380	(13.59) .535
-34	-59	(7.11) .280	(16.13) .635
-44	-69	(4.57) .180	(18.67) .735

### PROCESSING

#### Lead-Free Solderable:

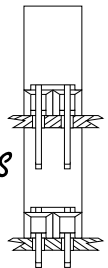
No, Lead Wave only



### APPLICATIONS



Self Nesting Sockets



(ESQ SERIES)

### ALSO AVAILABLE

Other Plating (MOQ Required)

#### Note:

Some lengths, styles and options are non-standard, non-returnable.



PC/104™ J1/P1 "Stackthrough" Connectors	
Standard Insertion Force	ESQ-132-14-G-D
Low Insertion Force	ESQ-132-39-G-D
PC/104™ J1 "Non-Stackthrough" Connectors	
Standard Insertion Force	ESQ-132-12-G-D
Low Insertion Force	ESQ-132-37-G-D
PC/104™ J2/P2 "Stackthrough" Connectors	
Standard Insertion Force	ESQ-120-14-G-D
Low Insertion Force	ESQ-120-39-G-D

PC/104 is a trademark of the PC/104 Consortium.

# Mouser Electronics

Authorized Distributor

Click to View Pricing, Inventory, Delivery & Lifecycle Information:

## Samtec:

[ESQ-120-12-S-D](#) [ESQ-132-34-G-D](#) [ESQ-108-34-G-D](#) [ESQ-109-12-G-S](#) [ESQ-105-23-S-D](#) [ESQ-112-33-G-D](#) [ESQ-115-23-G-D](#) [ESQ-103-12-T-S](#) [ESQ-110-33-G-D](#) [ESQ-113-12-G-T](#) [ESQ-105-12-G-D](#) [ESQ-107-12-G-D](#) [ESQ-117-23-S-D](#) [ESQ-132-13-G-D](#) [ESQ-125-13-G-D](#) [ESQ-115-44-S-D-LL](#) [ESQ-106-23-G-S](#) [ESQ-105-44-G-D](#) [ESQ-108-33-G-D](#) [ESQ-113-44-S-D](#) [ESQ-120-13-G-D](#) [ESQ-130-23-G-D](#) [ESQ-120-34-G-D](#) [ESQ-132-14-G-D](#) [ESQ-132-12-S-D](#) [ESQ-120-12-G-D](#) [ESQ-120-14-G-D](#) [ESQ-132-12-G-D](#) [ESQ-120-39-G-D](#) [ESQ-117-33-G-D](#) [ESQ-102-12-G-D](#) [ESQ-105-12-G-S](#) [ESQ-105-13-G-D](#) [ESQ-110-34-G-D](#) [ESQ-120-23-T-D](#) [ESQ-132-24-G-D](#) [ESQ-120-24-G-D](#) [ESQ-120-69-G-D](#) [ESQ-115-12-G-T](#) [ESQ-120-33-G-D](#) [ESQ-101-14-G-D](#) [ESQ-104-14-G-D](#) [ESQ-108-44-G-D](#) [ESQ-102-13-G-D](#) [ESQ-105-33-S-D](#) [ESQ-105-58-S-D](#) [ESQ-104-23-T-S](#) [ESQ-104-37-G-D](#) [ESQ-108-13-T-S](#) [ESQ-105-24-G-D](#) [ESQ-110-37-G-D](#) [ESQ-107-12-L-D-LL](#) [ESQ-108-37-G-S](#) [ESQ-105-23-S-T](#) [ESQ-106-23-L-D](#) [ESQ-105-12-G-D-LL](#) [ESQ-106-12-G-S-LL](#) [ESQ-110-44-G-D-LL](#) [ESQ-117-34-S-D](#) [ESQ-110-14-G-D](#) [ESQ-112-44-S-S](#) [ESQ-120-23-L-D](#) [ESQ-110-14-L-S-LL](#) [ESQ-118-12-T-S](#) [ESQ-103-34-G-D](#) [ESQ-108-44-S-D](#) [ESQ-110-23-T-D](#) [ESQ-117-69-L-D](#) [ESQ-122-33-L-D](#) [ESQ-111-44-G-T](#) [ESQ-117-23-G-D](#) [ESQ-125-12-L-D](#) [ESQ-125-44-S-D](#) [ESQ-130-14-G-D](#) [ESQ-132-14-G-S](#) [ESQ-114-12-G-D](#) [ESQ-117-69-G-T](#) [ESQ-126-24-G-D](#) [ESQ-132-12-G-D-LL](#) [ESQ-116-13-G-D](#) [ESQ-117-14-G-S](#) [ESQ-120-33-L-D-LL](#) [ESQ-118-12-G-D](#) [ESQ-122-34-L-S](#) [ESQ-120-48-L-D](#) [ESQ-125-23-S-T](#) [ESQ-136-39-G-D](#) [ESQ-102-33-L-S](#) [ESQ-105-12-T-S](#) [ESQ-105-44-S-S](#) [ESQ-102-37-G-S](#) [ESQ-103-23-T-D](#) [ESQ-106-14-T-S](#) [ESQ-108-12-L-S](#) [ESQ-104-48-G-S](#) [ESQ-104-44-G-D](#) [ESQ-108-14-G-D](#) [ESQ-104-12-G-D](#) [ESQ-106-33-G-T](#) [ESQ-106-23-G-S-LL](#)