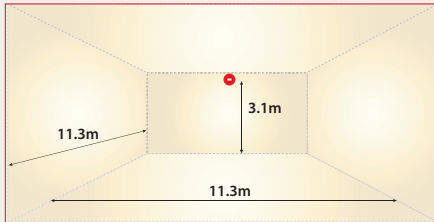


High Output Sounder Beacon

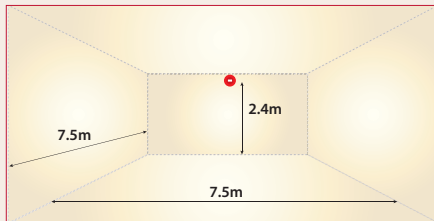
Nexus Pulse 105 & 110

Nexus Pulse wall mounted visual alarm devices are available as combined sounder beacons.

White Flash EN54-23 Coverage: W-3.1-11.3

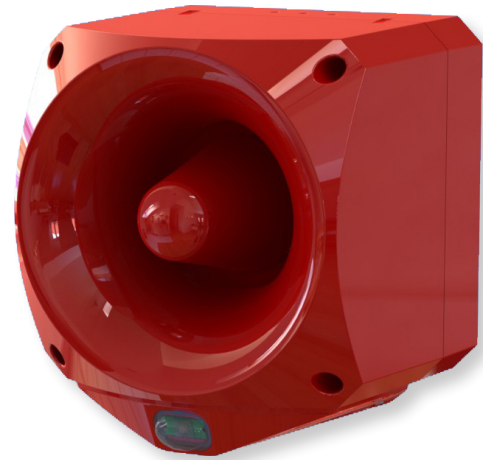


Red Flash EN54-23 Coverage: W-2.4-7.5

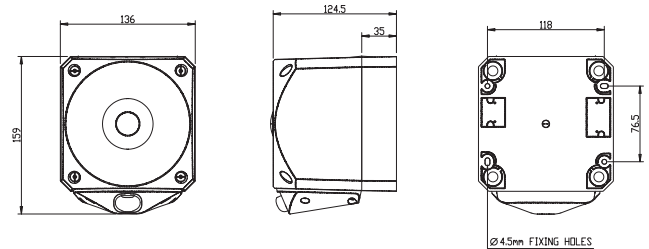


Features

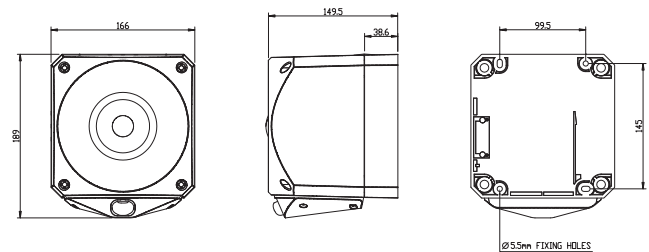
- Conforms to EN54-23/EN54-3
- Pulse Alert Technology
- Body colour: red
- Flash colour: red or white
- Wire to base technology
- Simple upgrade
- Synchronised flash
- No surge current
- Weatherproof to IP66



Nexus Pulse 105



Nexus Pulse 110



Specifications

Part	Description	Body Colour	Flash Colour	Audibility at 1m	Voltage	Current @ 0.5Hz	Current @ 1Hz
ENC-6001	Nexus Pulse 105 Sounder Beacon	Red	White	105 dB(A)	17-60 VDC	50mA	70mA
ENC-6002	Nexus Pulse 110 Sounder Beacon	Red	White	110 dB(A)	17-60 VDC	65mA	85mA
END-6001	Nexus Pulse 105 Sounder Beacon	Red	Red	105 dB(A)	17-60 VDC	50mA	70mA
END-6002	Nexus Pulse 110 Sounder Beacon	Red	Red	110 dB(A)	17-60 VDC	65mA	85mA

IP Rating: IP66 **Rating:** Continuous **Frequency:** See tone table **Operating Temp:** -25°C to +70°C
Cable Entries: 5 **Weight:** Nexus 105: 0.8kg; Nexus 110: 1.2kg