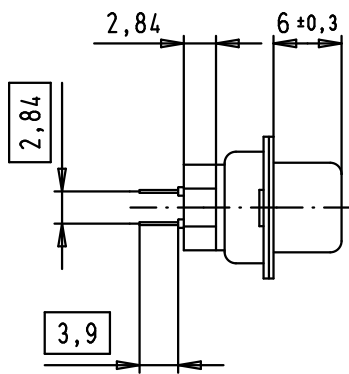
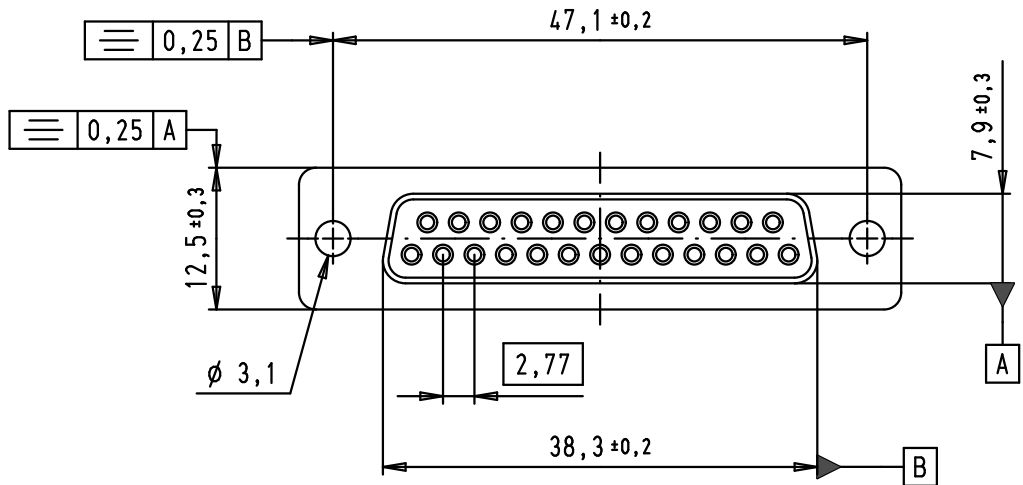


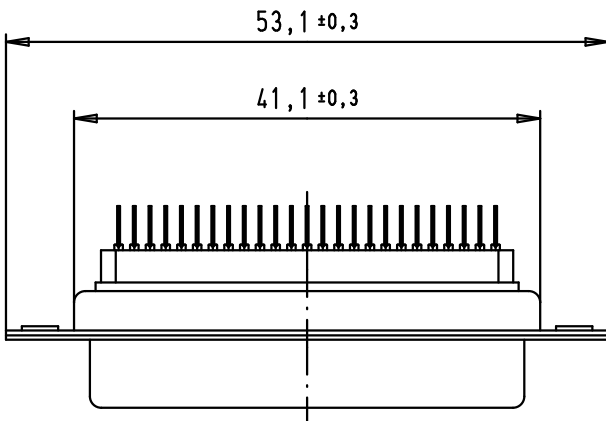
5 4 3 2 1



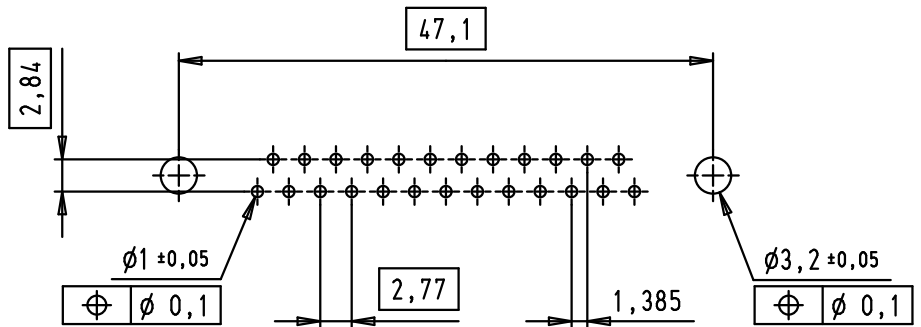
SPECIFICATIONS

FREQUENCY (MHz)	ATTENUATION (dB)
5	0,5
10	1
50	3,5
100	4
500	5
1000	5,5

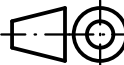

Operating voltage < 250 V AC
 Working current < 7,5 A
 Insulation resistance > 1GΩ
 Contact resistance < 15 mΩ
 Dielectric withstanding voltage 500 V AC / minute



PCB layout, component side



A

				Dot.	Name	 All Dim. in mm Orig. Size DIN A 4
				Detail.	11/06/09 PK	
				Insp.		
				Stand.		
EC00332	11/06/09	PK	HARTING EURL F-95972 Paris			
Mod.	Dot.	Name				

D-Sub, female, straight,
 25 poles, tin plated shell,
 solder pins, ferrite filter

Maßstab/
 Scale
 1,5:1

TB 09 64 312 7800

Sub.

Blatt/ Page
 1 / 1

09 64 312 7800	Au Flash
Part number	Performance level