



# Interchangeable Line Lens

## 16° Fan Angle

## Product Overview

The 16° line lens from Global Laser is designed to be a simple interchangeable optic that can be screwed on and off the front of any of our M9 threaded laser modules with a suitable collimator (see table below). This allows the user to quickly and efficiently change a dot output laser module to a 16° line which is suitable for a wide range of applications including alignment, positioning and machine vision. The cross lens consists of a glass lens element fitted within an 11mm diameter lens holder.

The optic produces a line with gaussian distribution in both axis. The results in a line with high intensity levels in the centre of the line. The downside is that power levels decrease towards the ends of the line. However it is capable of producing fine lines widths and providing a cost effective solution.

Global Laser Part Number	RS Part Number	Description
1951-01-000	RS697-3513	Red Laser Alignment Kit
1956-01-000	RS127-1568	Gated Cameo Laser Development Kit
3117-12-000	RS127-1572	LaserLyte-Flex 635nm 1mW Dot
3117-10-000	RS697-3557	LaserLyte Flex 635nm 5mW Dot
3117-11-000	RS127-1571	LaserLyte-Flex 635nm 10mW Dot
3118-03-000	TBC	LaserLyte-Flex 515nm 1mW Dot
3118-04-000	TBC	LaserLyte-Flex 515nm 5mW Dot
3118-05-000	TBC	LaserLyte-Flex 515nm 10mW Dot
1266-26-000	TBC	Gated Cameo 635nm 0.8mW A Lens
1266-27-000	TBC	Gated Cameo 635nm 2.8mW A Lens

## Specification

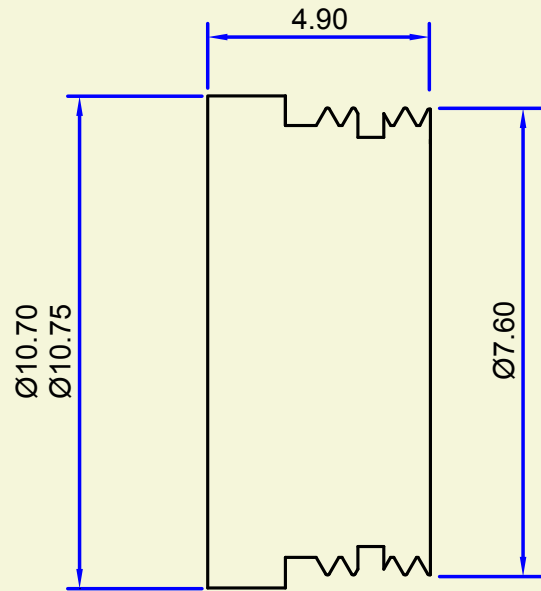
	Optical Information
Lens Material	Glass
Lens Type	Plano Convex Cylindrical
Exit Aperture	5.5mm
A/R Coated	Yes (MgF2)
Typical Input Beam Size	5 by 1.5mm
Typical Fan Angle	16°
Typical Transmission Loss (650nm)	≤5%



# Interchangeable Line Lens 16° Fan Angle

## Mechanical Dimensions

Interchangeable Line Lens (16° Fan Angle)



**Please Note:** Global Laser reserve the right to change descriptions and specifications without notice.



T: +44 (0)1495 212213  
F: +44 (0)1495 214004  
E: [sales@globalasertech.com](mailto:sales@globalasertech.com)  
[www.globalasertech.com](http://www.globalasertech.com)

Global Laser Ltd  
Unit 9-10  
Roseheyworth Business Park  
Abertillery, Gwent NP13 1SP UK