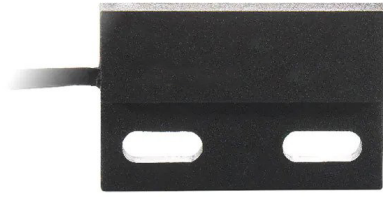


RND 410-00047






**RND 410-00047**

Standard Reed Sensor Flatpack

Electrical Characteristics		@ 25 °C
Contact form		A
Contact rating max.	W / VA	10
Switching voltage max.	VDC	200
	VAC	140
Switching current max.	A	1
Carry current max.	A	1.2
Breakdown voltage min.	VDC	240
Total resistance max. (initial)	mΩ	150
Insulation resistance min.	Ω	10 <sup>10</sup>

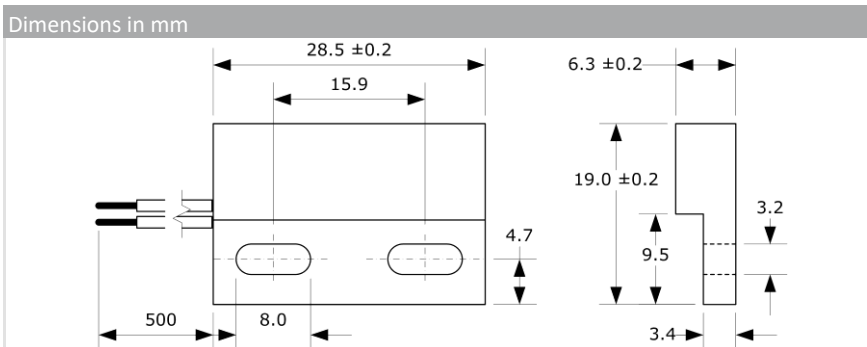
Features
➤ Adjustable switching point
➤ Various sensitivity ranges available
➤ Customized types available

Magnetical Characteristics (of unmodified Reed Switch)		@ 25 °C
Pull in range available	AT	10 - 25
Drop out min.	AT	4
Test coil	TC	014
Test equipment tolerance	± AT	2

Approvals




Operating Characteristics (of unmodified Reed Switch)		@ 25 °C
Switching frequency max.	Hz	500
Resonant frequency typ.	Hz	4000
Operate time max. (incl. bounce)	ms	1
Release time max.	ms	0.4

Environmental Characteristics	
Operating temperature	°C -20 to +85
Vibration (50-2000 Hz)	g 20
Shock (1/2 sin 11 ms)	g 100



Ordering Information	
Packing Unit	25 pcs
Weight per piece	10.4 g
Weight per package	270 g
Standard AT Ranges	
1 =	10 to 15 AT
2 =	15 to 20 AT
3 =	20 to 25 AT

RND 410-00047



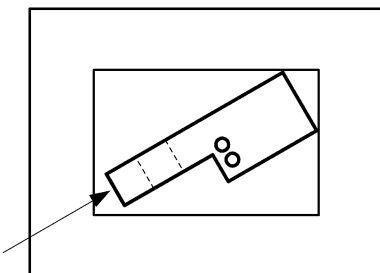
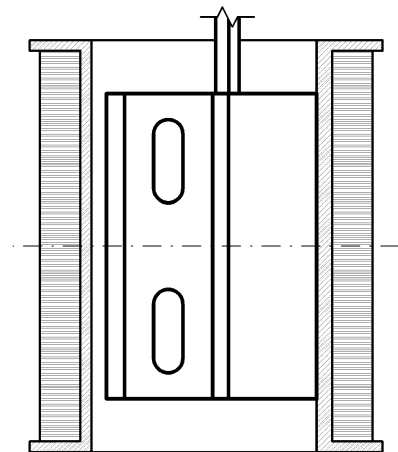
**RND 410-00047**

Standard Reed Sensor Flatpack

## Material Information

	Material	Colour
Housing	PA-GF	black
Cable	UL 1007/1569, AWG 20, 4 mm stripped and tinned	black
Potting compound	Epoxy	black

## Test Procedure of final Reed Sensor



Test Coil placed in vertical position

Reed Sensor centered in Test Coil

Reed Sensor pushed into opposite corner of Test Coil

## Test Parameters

Test coil	TC-328
Test programs	
AT range	Test program
1 =	MS-328-3-1
2 =	MS-328-3-2
3 =	MS-328-3-3