

# Flatpack Magnet

## Features

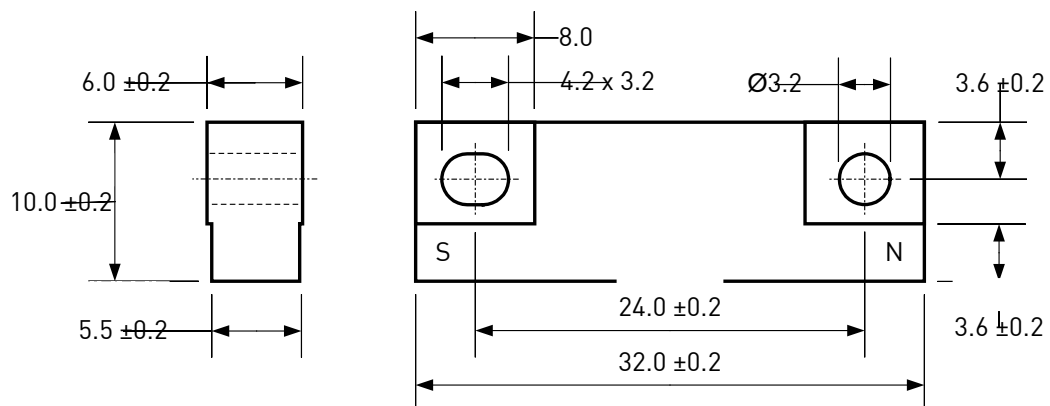
- Magnet in Flatpack housing
- Easy screw mounting
- Magnetic material: N30H



## Specification

Housing Material	PA-GF, Black
Potting Material	Epoxy, Black
Orientation	Over Housing Length
Magnetic Material	N30H
Remanence Br	1105 mt
Coercivity HcB	836 kA/m
Coercivity HcJ	1274 kA/m
Energy Product (BH) max.	235 kJ/m <sup>3</sup>
Magnetic Moment M	4.1 x 10 <sup>-5</sup> Vs cm
Operating Temperature	-20 ... 85 °C
Temperature Coefficient Tk(Br)	-0.11 % / °C

## Drawing



Art. Nr.  
RND 410-00052