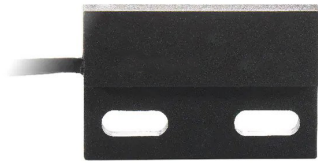


RND 410-00048




RND 410-00048

Form C Reed Sensor Flatpack

Electrical Characteristics		@ 25 °C
Contact form		C
Contact rating max.	W / VA	5
Switching voltage max.	VDC	175
	VAC	120
Switching current max.	A	0.25
Carry current max.	A	1.5
Breakdown voltage min.	VDC	200
Total resistance max. (initial)	mΩ	150
Insulation resistance min.	Ω	10 ⁹

Features
➤ Adjustable switching point
➤ Customized types available
➤ Various sensitivity ranges available

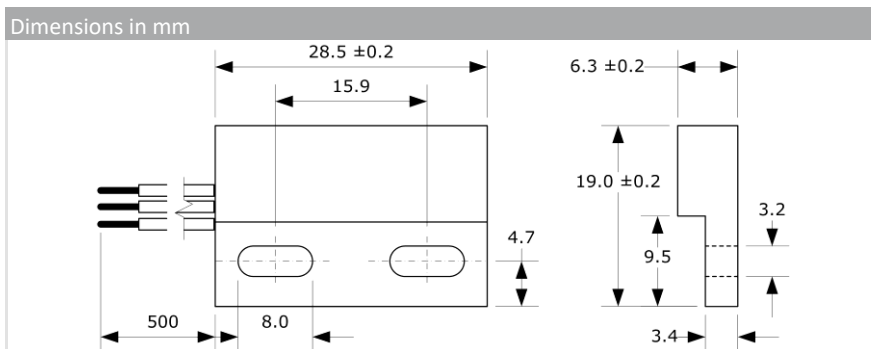
Magnetical Characteristics (of unmodified Reed Switch)		@ 25 °C
Pull in range available	AT	15 - 30
Drop out min.	AT	5
Test coil	TC	200
Test equipment tolerance	± AT	2

Approvals




Operating Characteristics (of unmodified Reed Switch)		@ 25 °C
Switching frequency max.	Hz	100
Resonant frequency typ.	Hz	1100
Operate time max. (incl. bounce)	ms	0.7
Release time max.	ms	1

Environmental Characteristics	
Operating temperature	°C -20 to +85
Vibration (50-2000 Hz)	g 30
Shock (1/2 sin 11 ms)	g 50



Ordering Information	
Packing Unit	25 pcs
Weight per piece	9.7 g
Weight per package	255 g
Standard AT Ranges	
	2 = 15 to 20 AT
	3 = 20 to 25 AT
	4 = 25 to 30 AT

RND 410-00048



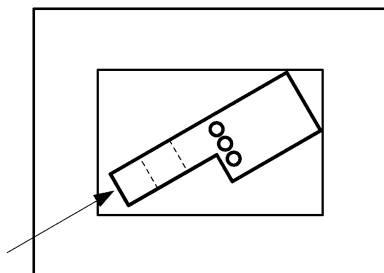
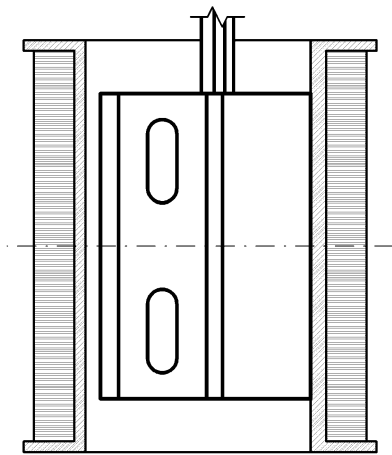
RND 410-00048

Form C Reed Sensor Flatpack

Material Information

	Material	Colour
Housing	PA-GF	black
Cable	UL 1061, AWG 22, 4 mm stripped and tinned	COM: black, NO: grey, NC: white
Potting compound	Epoxy	black

Test Procedure of final Reed Sensor



Test Coil placed in vertical position

Reed Sensor centered in Test Coil

Reed Sensor pushed into opposite corner of Test Coil

Test Parameters

Test coil	TC-328	
Test programs		
	AT range	Test program
2 =		MS-328-4-2
3 =		MS-328-4-3
4 =		MS-328-4-4