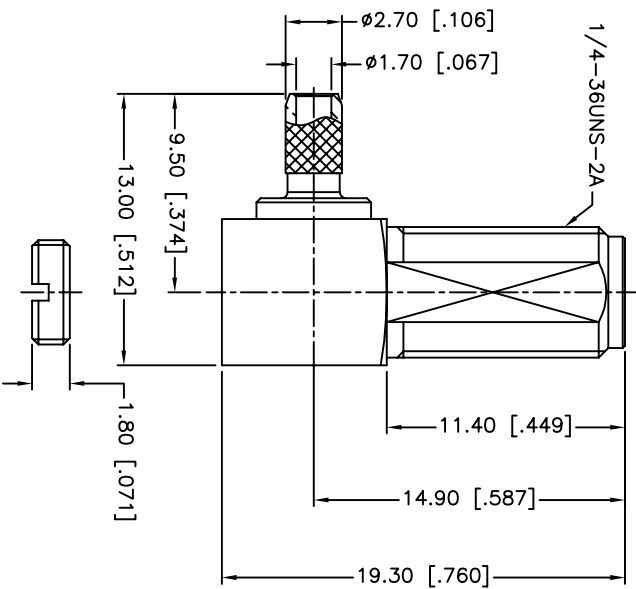
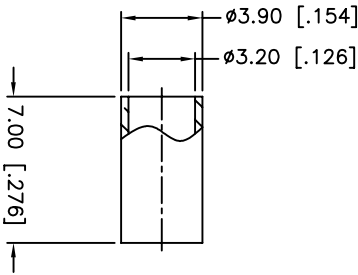
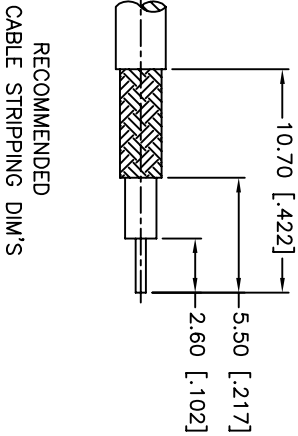
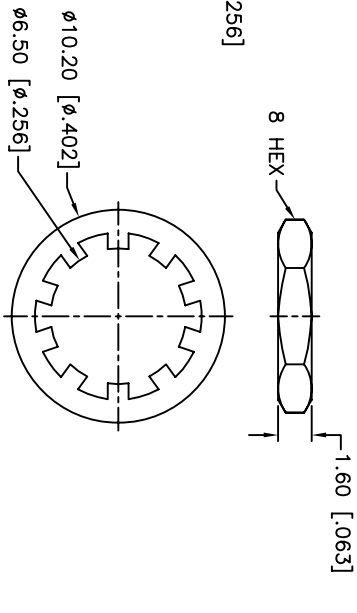
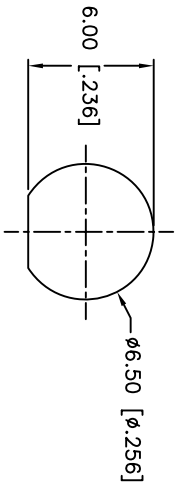
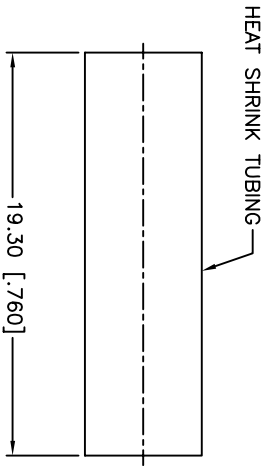


REV.	DATE	ECR NO.	DESCRIPTION
A	11/26/03	XXXXXX	UPDATE DRAWING FORMAT
B	03/05/07	XXXXXX	REVISE BARREL AND FERRULE DIMENSION
C	10/28/07	XXXXXX	ADD CRIMP NOTES
D	06/18/09	XXXXXX	DIRECTION OF THE CRIMPING WAS CHANGED



1. CRIMPED FERRULE
HEX CRIMP SIZE :128"
2. CONTACT PIN TO SOLDER
3. MAX. PANEL THICKNESS=3.2MM

DESCRIPTION	MATERIAL	FINISH	QTY
HEAT SHRINK TUBING			1
FERRULE	BRASS	GOLD	1
COVER	BRASS	GOLD	1
HEX NUT	BRASS	GOLD	1
LOCK WASHER	BRASS	GOLD	1
CONTACT PIN	BER. COPPER	GOLD	1
INSULATOR	PTFE	NATURAL	1
BODY WITH BARREL	BRASS	GOLD	1

UNLESS OTHERWISE SPECIFIED, DIMENSIONS ARE IN INCHES AND FOR CUSTOMER REFERENCE ONLY.
UNLESS OTHERWISE SPECIFIED, TOLERANCES FOR MILLIMETERS ARE:
0.5 - 8mm ± 0.20mm
8 - 30mm ± 0.40mm
30 - 120mm ± 0.50mm
UNLESS OTHERWISE SPECIFIED, TOLERANCES FOR INCHES ARE:
.020 - .315 = ± 0.007"
.315 - 1.180 = ± 0.015"
1.180 - 4.724 = ± 0.020"

APPROVALS	DATE
M.ZHANG	06/18/09
CHECKED	
ISSUED	
SHEET	1 OF 1

Amphenol Connex

SMA R/A BULKHEAD JACK
(FOR RG-174/U,188A/U,316/U)

132245

REV. D SIZE A SCALE NA