

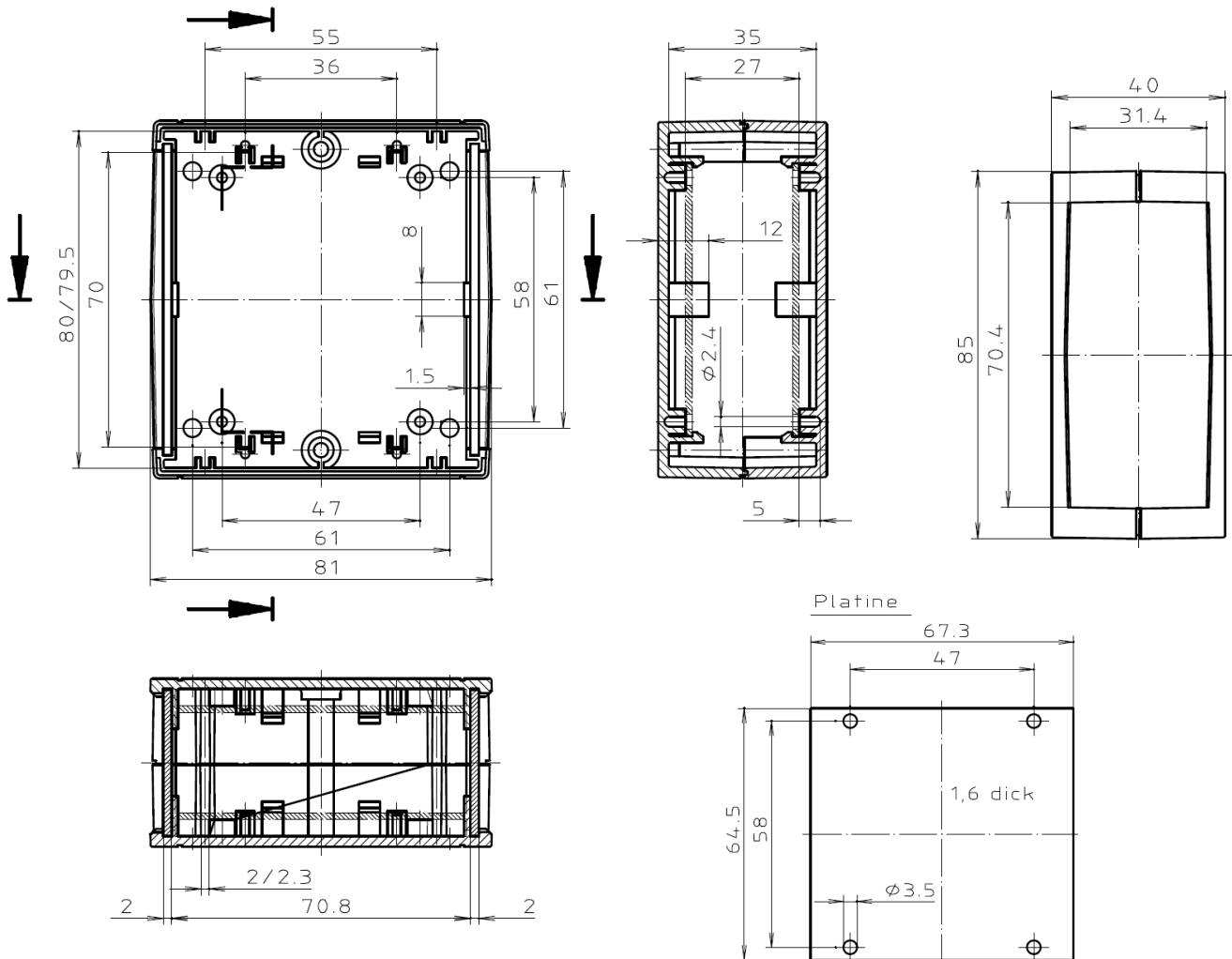
# SavvyCASE

## Plastic Enclosure for Savvy128 and SavvyDISP.

SavvyCASE is a plastic enclosure, perfectly matching to the Savvy128 controller board. It provides readily worked front and rear panels for the Savvy128 onboard components and connectors.

Optionally SavvyDISP can also be used with SavvyCASE. SavvyDISP comes with a new front panel, which replaces the regular SavvyCASE front panel (see picture on the right).

**Dimensions** – The pictures below show the dimensions of the SavvyCASE enclosure.



(Dimension pictures taken from Bopla Unimas-85 data sheet Unimas\_85\_2801337.pdf.)

**Disclaimer** – Erik Lins makes no warranty for the use of its products and assumes no responsibility for any errors which may appear in this document nor does it make a commitment to update the information contained herein. Erik Lins products are not intended for use in medical, life saving or life sustaining applications. Erik Lins retains the right to make changes to these specifications at any time, without notice. All product names referenced herein are trademarks of their respective companies. chip45.com is a registered trademark of Erik Lins.