

Actual information about approvals can be found on
<http://www.schurter.com/approvals>

cRU[®]US

C14



70° C



Standard- or Medical-Filter

Description

- Panel mount:
Snap-in or screw-on mounting from front side
- 2 Functions:
Connector Protection class I, Line filter in standard and medical version
- Quick connect terminals 6.3 x 0.8 mm

Characteristics

- Ultra-compact design
- All single elements are already wired
- Qualified for use in equipment according IEC/EN 60950

Other versions on request:

- Capacitance CX1

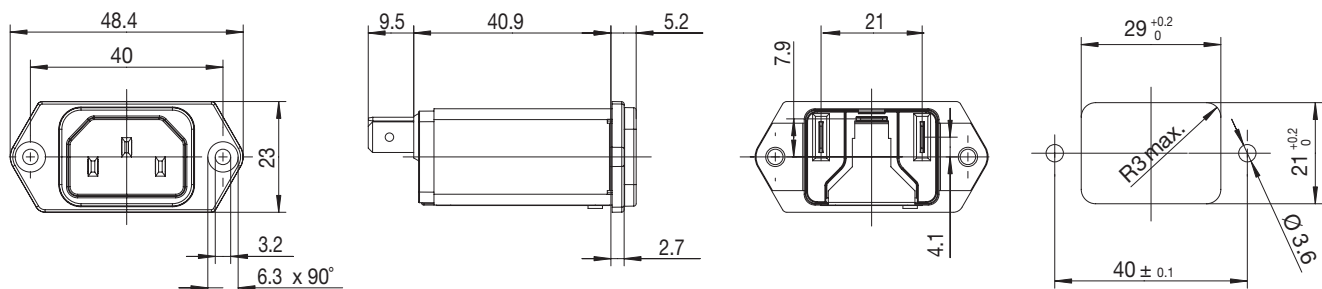
Technical data

Ratings IEC	1 - 10 A @ Ta 40 °C / 250 VAC; 50 Hz
Ratings UL/CSA	1 - 15 A @ Ta 40 °C / 125 VAC; 60 Hz
Leakage current	standard < 0.5 mA (250 V / 60 Hz) medical < 5 µA (250 V / 60 Hz)
Dielectric strength	> 1.7 kVDC between L-N > 2.7 kVDC between L/N-PE Test voltage (2 sec)
Allowable operation temp.	-25 °C to 85 °C
Climatic category	25/085/21, IEC 60068-1
Degree of protection	from front side IP40 acc. to IEC 60529
Protection class	Suitable for appliances with protection class I acc. to IEC 61140
Terminals	Quick connect terminals 6.3 x 0.8 mm
Panel thickness s	Screw-on: max 5 mm Mounting screw torque max 0.5 Nm Snap-in: 0.8 mm to 3 mm
Materials: Housing	Thermoplastic, black, UL 94V-0

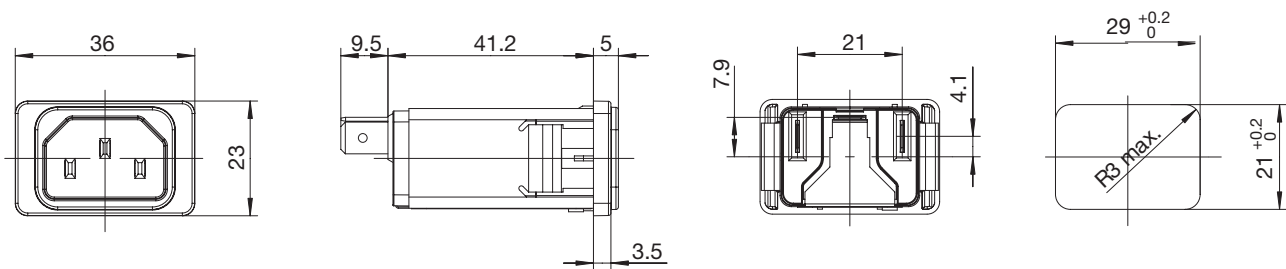
Appliance-inlet /-outlet	C14 acc. to IEC/EN 60320-1, UL 498, CSA C22.2 no. 42 (for cold condition) pin-temperature 70 °C, 10 A, Protection class I
Line filter	Standard and medical version, IEC 60939, IEC 60601-1, UL 1283, UL 544, EN 133 200, CSA C22.2 no. 8 Technical details see page 288

Dimensions

Screw-on mounting



Snap-in mounting



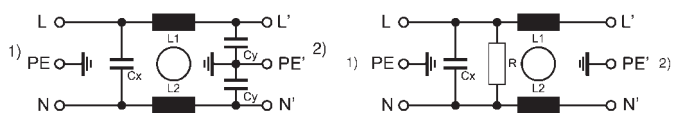
Technical data of filter-components

Rated current [A]	Filter-Type	Inductances L [mH]	Capacitance CX [nF]	Capacitance CY [nF]	R [MΩ]
1	Standard Version	11	47	2.2	
2	Standard Version	4	47	2.2	
3	Standard Version	2.5	47	2.2	
4	Standard Version	1.6	47	2.2	
6	Standard Version	0.7	47	2.2	
8	Standard Version	0.6	47	2.2	
10	Standard Version	0.4	47	2.2	
15	Standard Version	0.1	47	2.2	
1	Medical Version (M5)	11	47		1
2	Medical Version (M5)	4	47		1
3	Medical Version (M5)	2.5	47		1
4	Medical Version (M5)	1.6	47		1
6	Medical Version (M5)	0.7	47		1
8	Medical Version (M5)	0.6	47		1
10	Medical Version (M5)	0.4	47		1
15	Medical Version (M5)	0.1	47		1

Diagrams

Standard version

Medical version



1) Line
2) Load

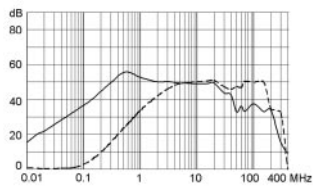
1) Line
2) Load

Attenuation loss

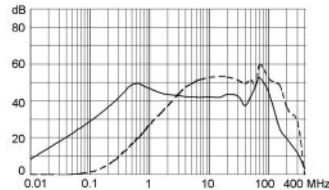
- - - differential mode ____ common mode

Standard version

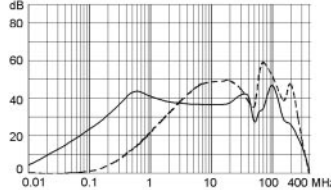
1 A



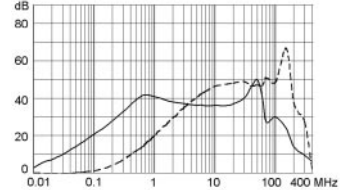
2 A



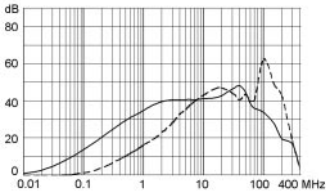
3 A



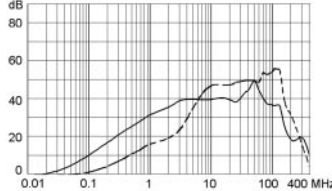
4 A



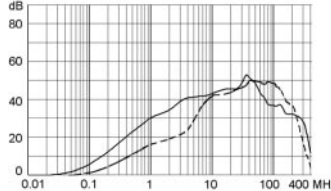
6 A



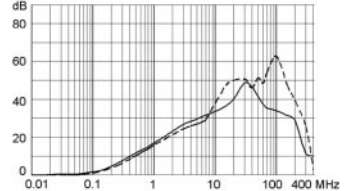
8 A



10 A

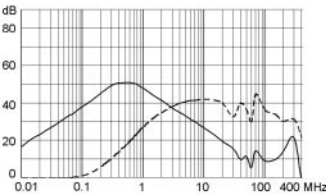


15 A

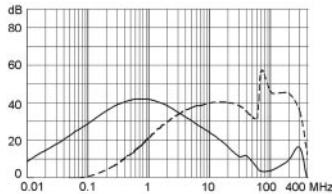


Medical version

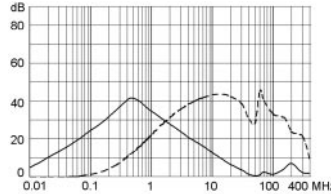
1 A



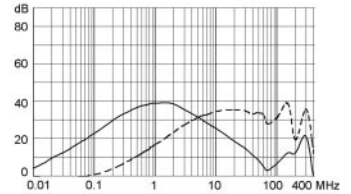
2 A



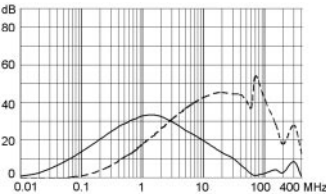
3 A



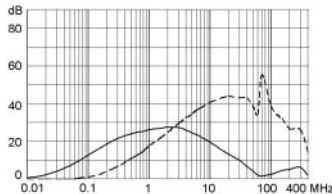
4 A



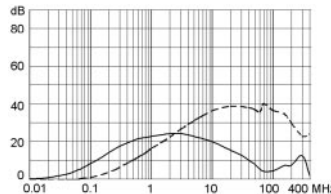
6 A



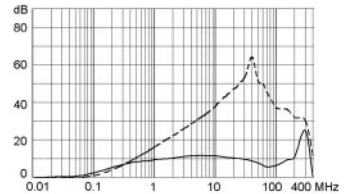
8 A



10 A



15 A



Variants

Order Number	Rated current [A]	Filter-Type	Panel mounting
5110.0143.1	1	Standard Version	Snap-in
5110.0243.1	2	Standard Version	Snap-in
5110.0343.1	3	Standard Version	Snap-in
5110.0443.1	4	Standard Version	Snap-in
5110.0643.1	6	Standard Version	Snap-in
5110.0843.1	8	Standard Version	Snap-in
5110.1043.1	10	Standard Version	Snap-in
5110.1543.1	15	Standard Version	Snap-in
5110.0133.1	1	Standard Version	Screw-on
5110.0233.1	2	Standard Version	Screw-on
5110.0333.1	3	Standard Version	Screw-on
5110.0433.1	4	Standard Version	Screw-on
5110.0633.1	6	Standard Version	Screw-on
5110.0833.1	8	Standard Version	Screw-on
5110.1033.1	10	Standard Version	Screw-on
5110.1533.1	15	Standard Version	Screw-on
5110.0143.3	1	Medical Version (M5)	Snap-in
5110.0243.3	2	Medical Version (M5)	Snap-in
5110.0343.3	3	Medical Version (M5)	Snap-in
5110.0443.3	4	Medical Version (M5)	Snap-in
5110.0643.3	6	Medical Version (M5)	Snap-in
5110.0843.3	8	Medical Version (M5)	Snap-in
5110.1043.3	10	Medical Version (M5)	Snap-in
5110.1543.3	15	Medical Version (M5)	Snap-in
5110.0133.3	1	Medical Version (M5)	Screw-on
5110.0233.3	2	Medical Version (M5)	Screw-on
5110.0333.3	3	Medical Version (M5)	Screw-on
5110.0433.3	4	Medical Version (M5)	Screw-on
5110.0633.3	6	Medical Version (M5)	Screw-on
5110.0833.3	8	Medical Version (M5)	Screw-on
5110.1033.3	10	Medical Version (M5)	Screw-on
5110.1533.3	15	Medical Version (M5)	Screw-on

Packaging unit 10 Pcs

Accessories

see page 278