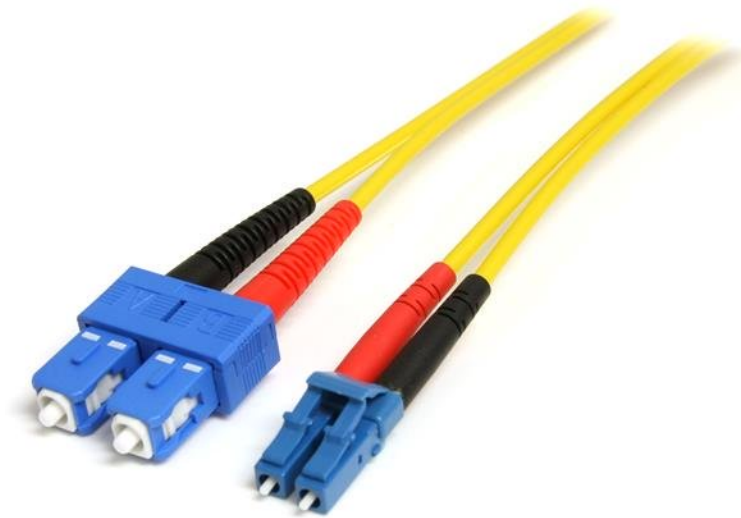


Fiber Optic Cable - Single-Mode Duplex 9/125 - LSZH - LC/SC - 7 m

Product ID: SMFIBLCSC7



The SMFIBLCSC7 7m LC to SC Single-Mode Duplex Fiber Cable features 9/125 micron fiber for high-speed, high bandwidth data transmissions over Gigabit Ethernet and Fiber Channel networks, with support for duplex single-mode applications.

This LC-SC patch cable is housed in a LSZH (Low-Smoke, Zero-Halogen) flame retardant jacket, to ensure minimal smoke, toxicity and corrosion when exposed to high sources of heat, in the event of a fire – an ideal solution for use in industrial settings, central offices and schools, as well as residential settings where building codes are a consideration.

Each Duplex 9/125 (OS1) Single-Mode Fiber Patch Cable is individually tested and certified to be within acceptable optical insertion loss limits for guaranteed compatibility and 100% reliability, and is backed by our lifetime warranty.

Certifications, Reports and Compatibility



Applications

- Use in Gigabit Ethernet and Fiber Channel applications
- Ideal solution for data applications requiring high speed data transmission
- Broadband systems
- Telecommunication/Data communication
- Fiber Connections in Patch Panels, Hubs, Switches, Routers

Features

- 1x LC SM male connector
- 1x SC SM male connector
- OS1 (9/125)
- LSZH (Low-Smoke, Zero-Halogen) cable jacket
- Attenuation loss meets or exceeds industry standards
- Molded connectors

Hardware	Warranty	Lifetime
	Fiber Size	9/125
	Fire Rating	LSZH Rated (Low Smoke Zero Halogen)
Performance	Cable Rating	10Gbps / 40Gbps / 100Gbps
	Fiber Classification	OS1
	Maximum Data Transfer Rate	100Gbps
	Type	Single Mode
Connector(s)	Connector A	1 - Fiber Optic LC Duplex Male
	Connector B	1 - Fiber Optic SC Duplex Male
Environmental	Humidity	0~90% RH
	Operating Temperature	-20°C to 60°C (-4°F to 140°F)
	Storage Temperature	-20°C to 60°C (-4°F to 140°F)
Physical Characteristics	Cable Length	7 m [23 ft]
	Color	Yellow
	Product Length	7 m [23 ft]
	Weight of Product	99 g [3.5 oz]
Packaging Information	Package Height	28 mm [1.1 in]
	Package Length	22 cm [8.7 in]
	Package Quantity	1
	Package Width	20 cm [7.9 in]
	Shipping (Package) Weight	110 g [3.9 oz]
What's in the Box	Included in Package	1 - 7m Single Mode Duplex Fiber Patch Cable LC-SC

Product appearance and specifications are subject to change without notice.